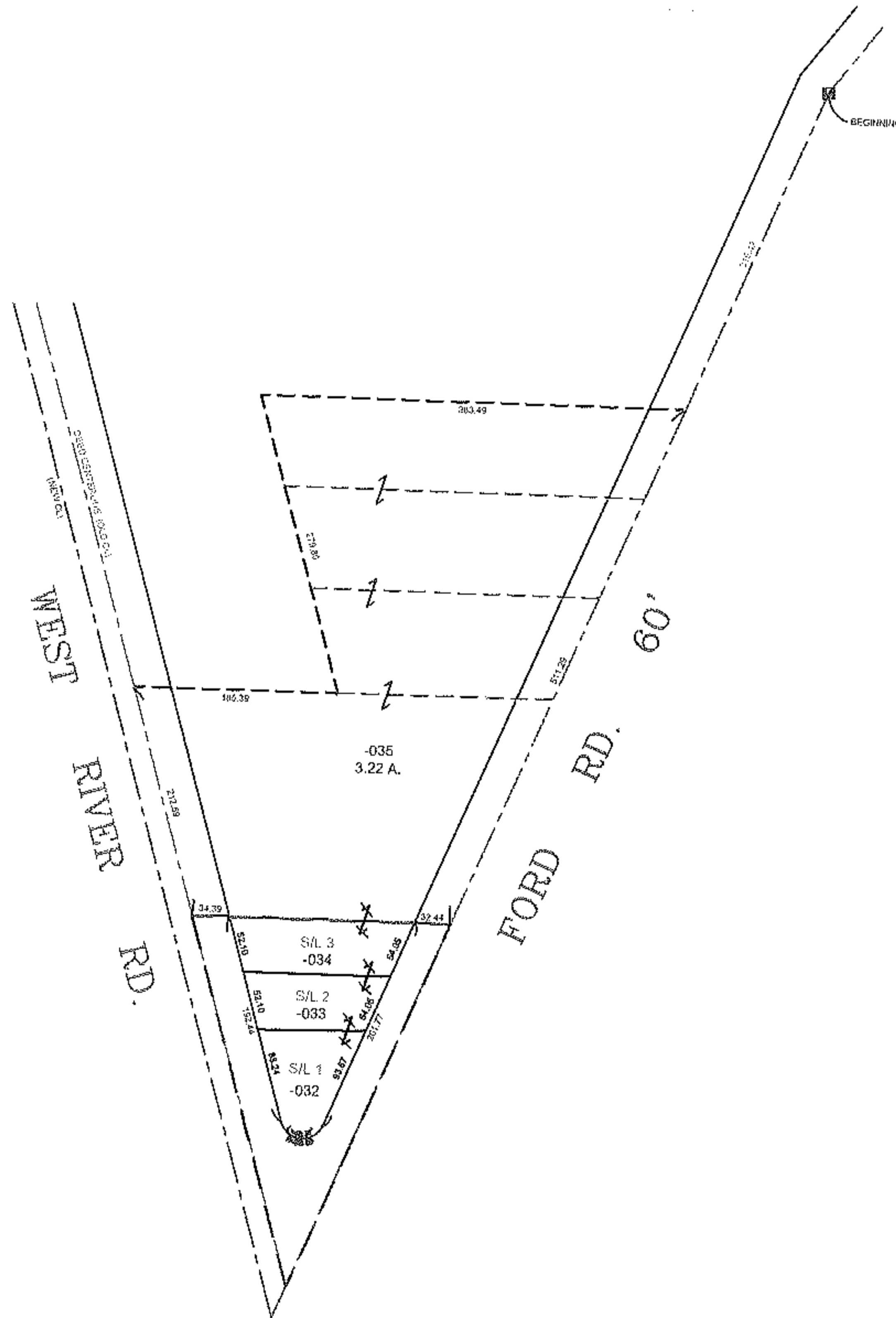
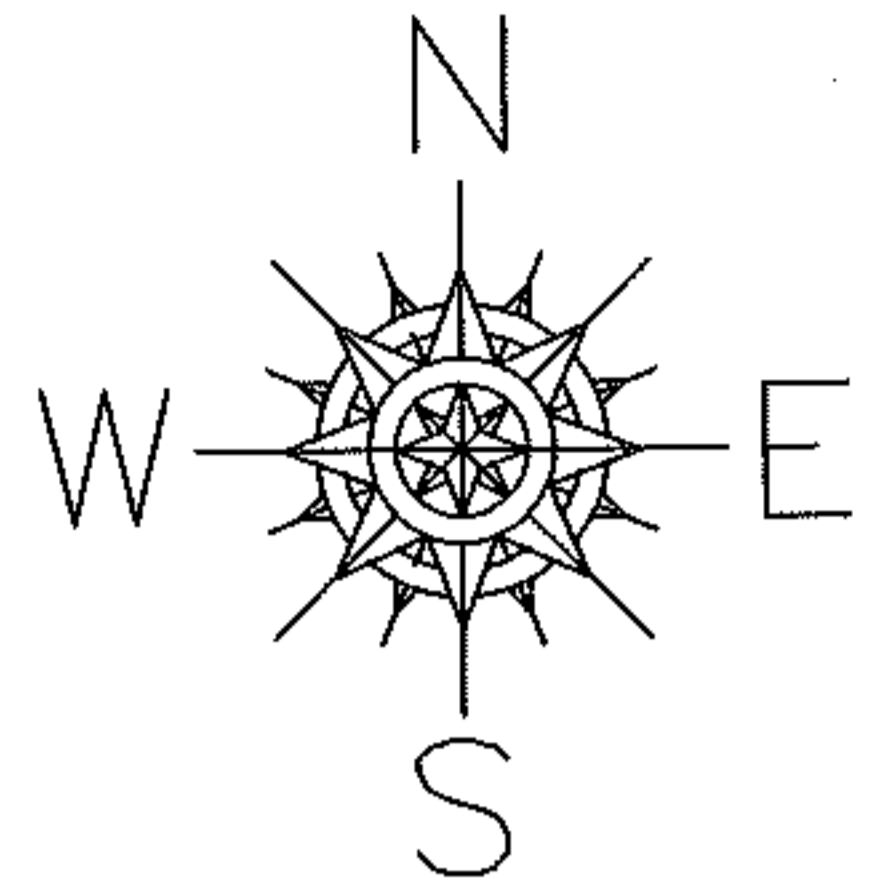


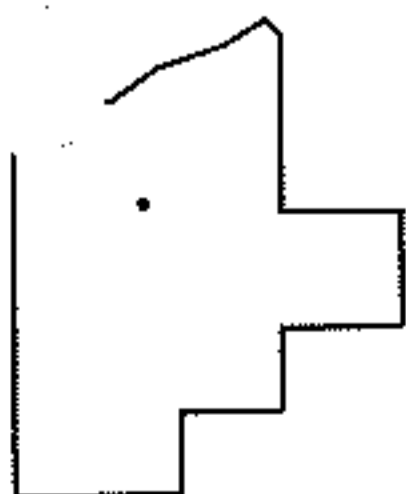
PARENT PARCEL: 06-24-172-000-010, -011, -013, -021 & -023
 CHILD PARCEL: 06-24-172-000-032 THRU -035
 STARTING POINT: MON. BOX AT ANGLE POINT OF FORD RD. CALLED FOR IN PLAT V.13 P. 12

12-03026



PRIOR INSTRUMENT: 20100323878

PRIOR INSTRUMENT: 20030895036



SPLITS/DEEDS PROCESSED
 LORAIN COUNTY TAX MAP DEPARTMENT
 226 MIDDLE AVE. ELYRIA, OHIO

SURVEYED BY: GILBERT M. BARISH
 CLOSURE: 0.01 : 10,000
 MAP PAGE(S): 6-47 & 6-48
 APPROVED BY: TJS DATE: 5/10/12
 SCALE: 1" = 200'