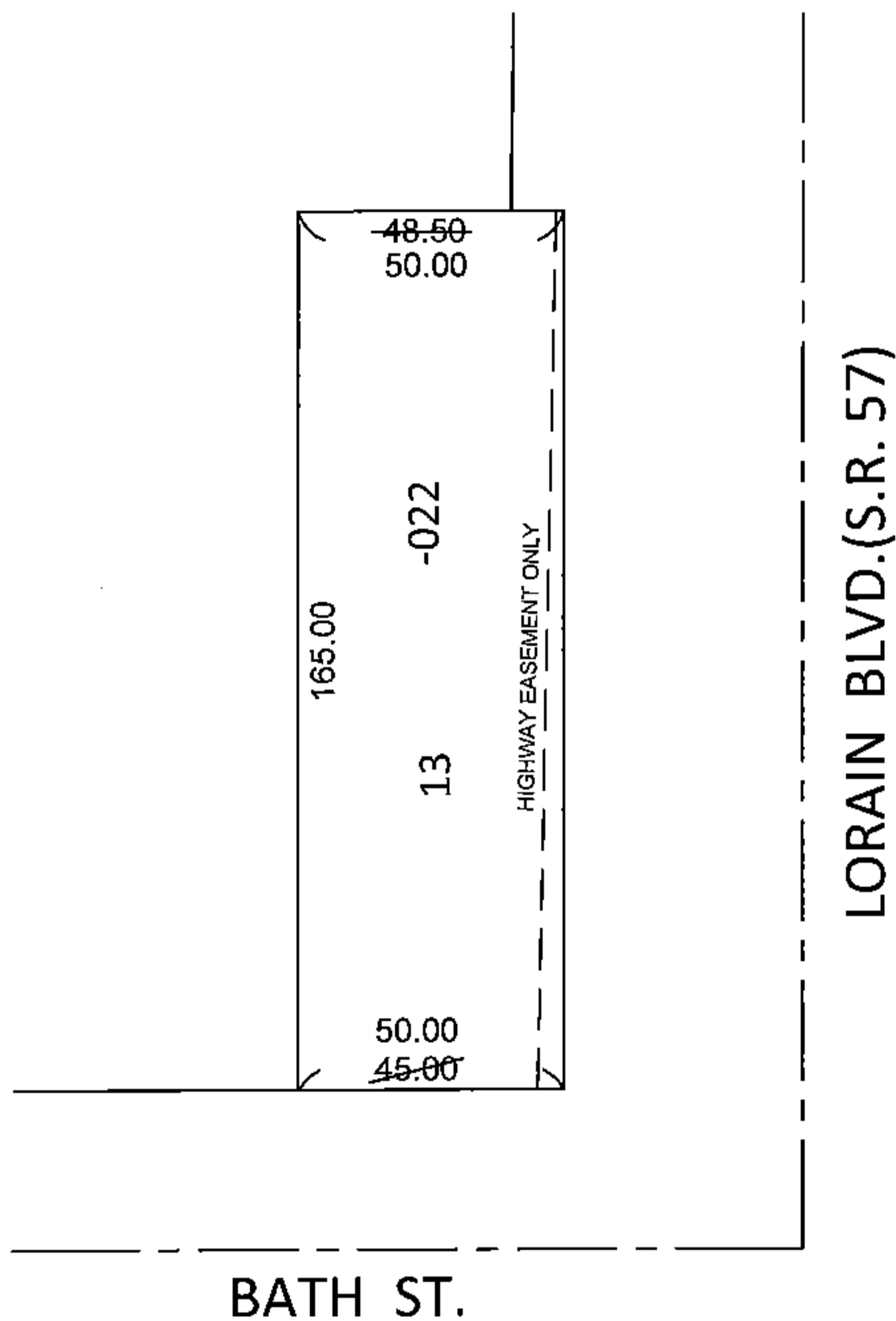
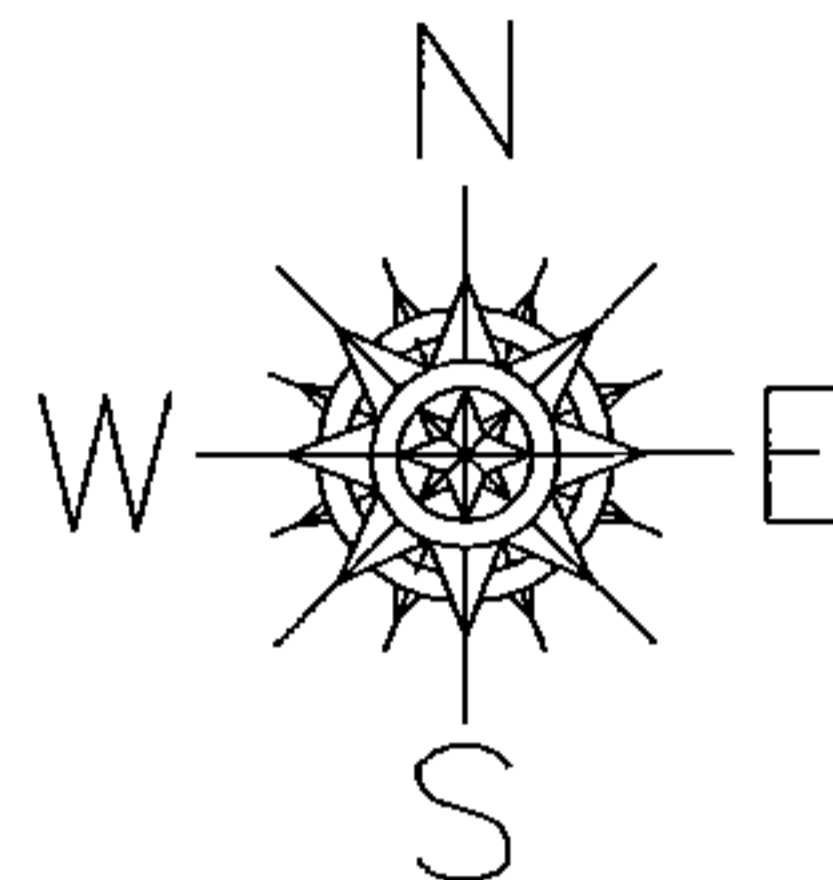


PARENT PARCEL: 06-24-064-101-022

CHILD PARCEL: _____

STARTING POINT: S/L 13 IN C.H. HEIGHTEN'S ADD. (VOL.4 PG. 19)

14-03020-C



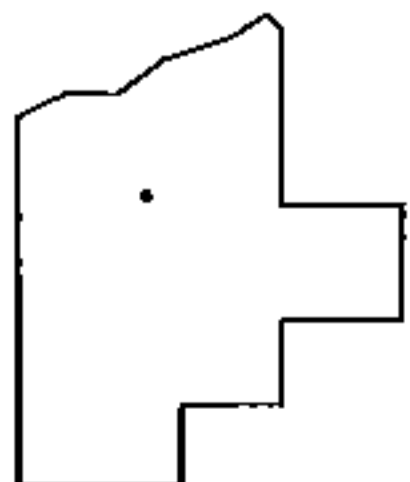
FRONTAGE CORRECTION

06-24-064-101-022

~~45.00 X 165~~

50.00 X 165.00

CORR. PER DV 529/326
HIGHWAY EASEMENT



SPLITS/DEEDS PROCESSED

LORAIN COUNTY TAX MAP DEPARTMENT
226 MIDDLE AVE. ELYRIA, OHIO

SURVEYED BY: N/A

CLOSURE: N/A

MAP PAGE(S): 6-81

APPROVED BY: TJS DATE: 9/17/14

SCALE: 1"= 50' PRIOR INST.: 20030967886