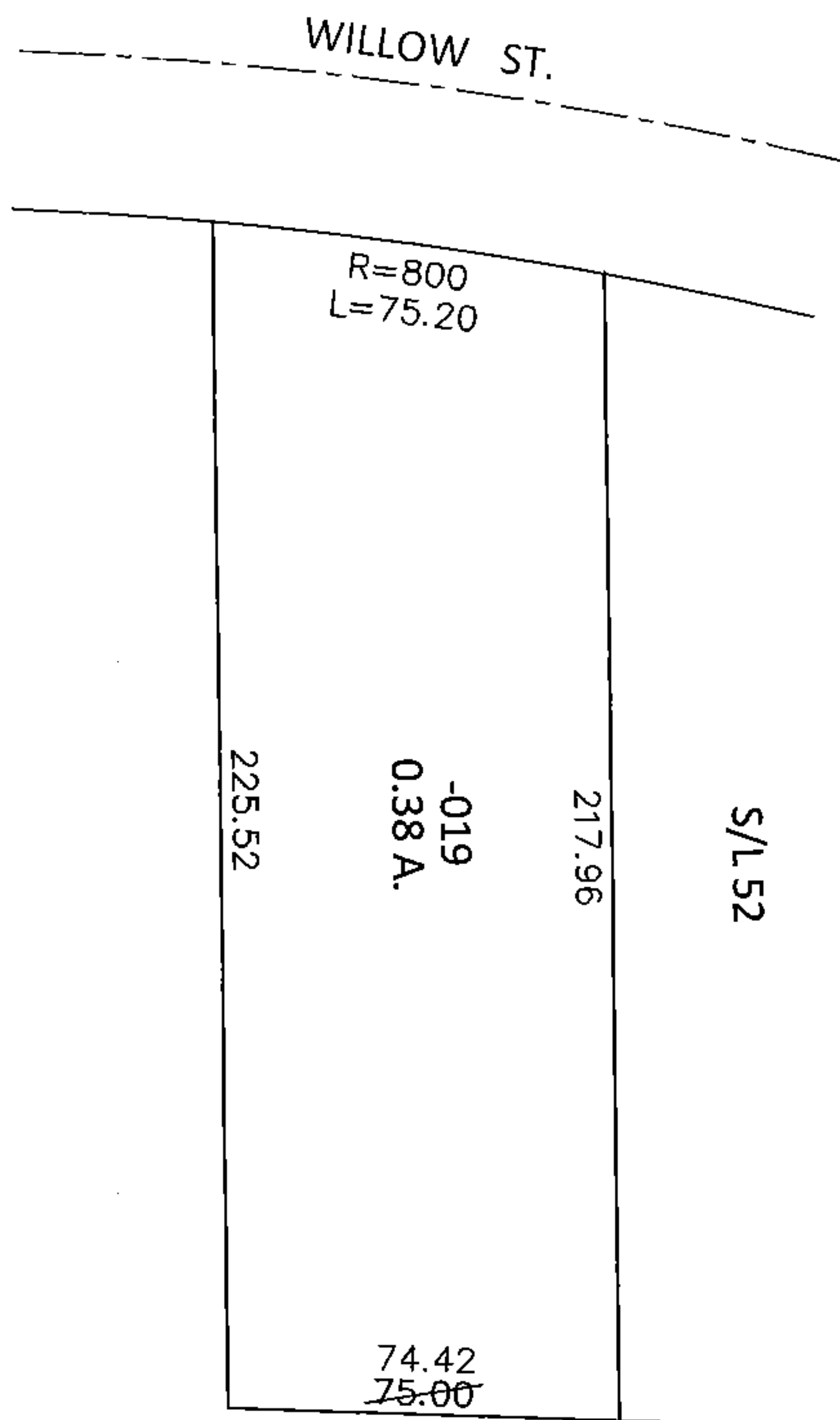
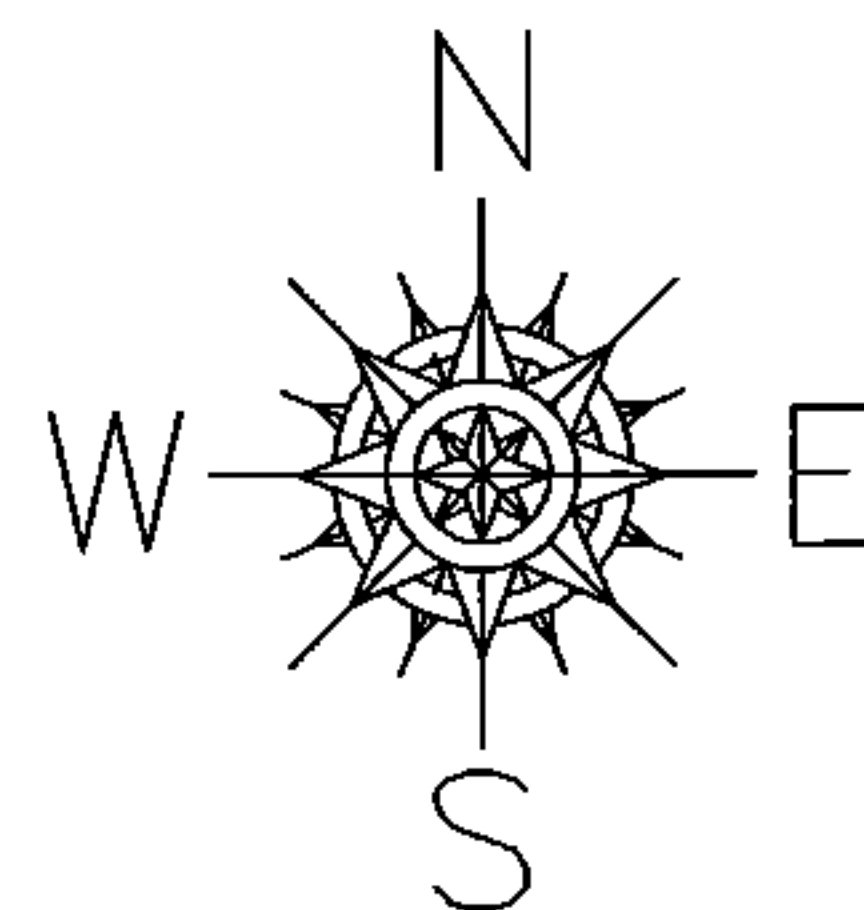


PARENT PARCEL: 16-00-003-105-019

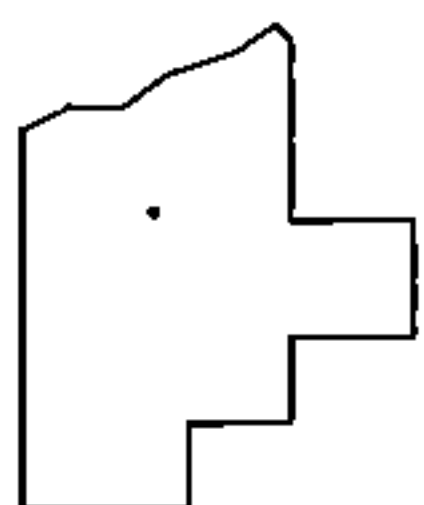
CHILD PARCEL: _____

STARTING POINT: NORTHWEST CORNER OF S/L 52 IN MYLES KNECHTGES SUB. NO.3 (VOL.18 PG. 2)

14-03013-A



MAP CORRECTION ONLY



SPLITS/DEEDS PROCESSED

LORAIN COUNTY TAX MAP DEPARTMENT
226 MIDDLE AVE. ELYRIA, OHIO

SURVEYED BY: DALE R. HAYWOOD

CLOSURE: .01:10,000

MAP PAGE(S): 16-00-003-A

APPROVED BY: RRM DATE: 9-4-14

SCALE: 1"= 50' PRIOR INST.: 20120420339