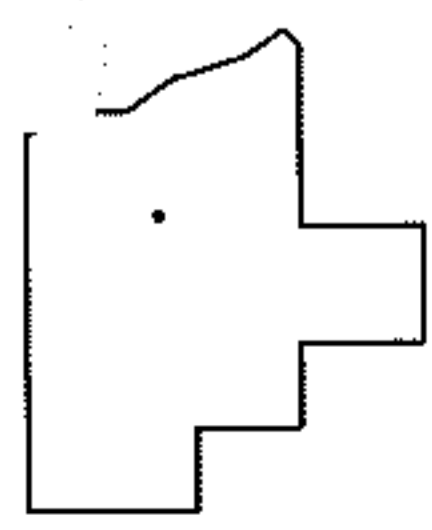
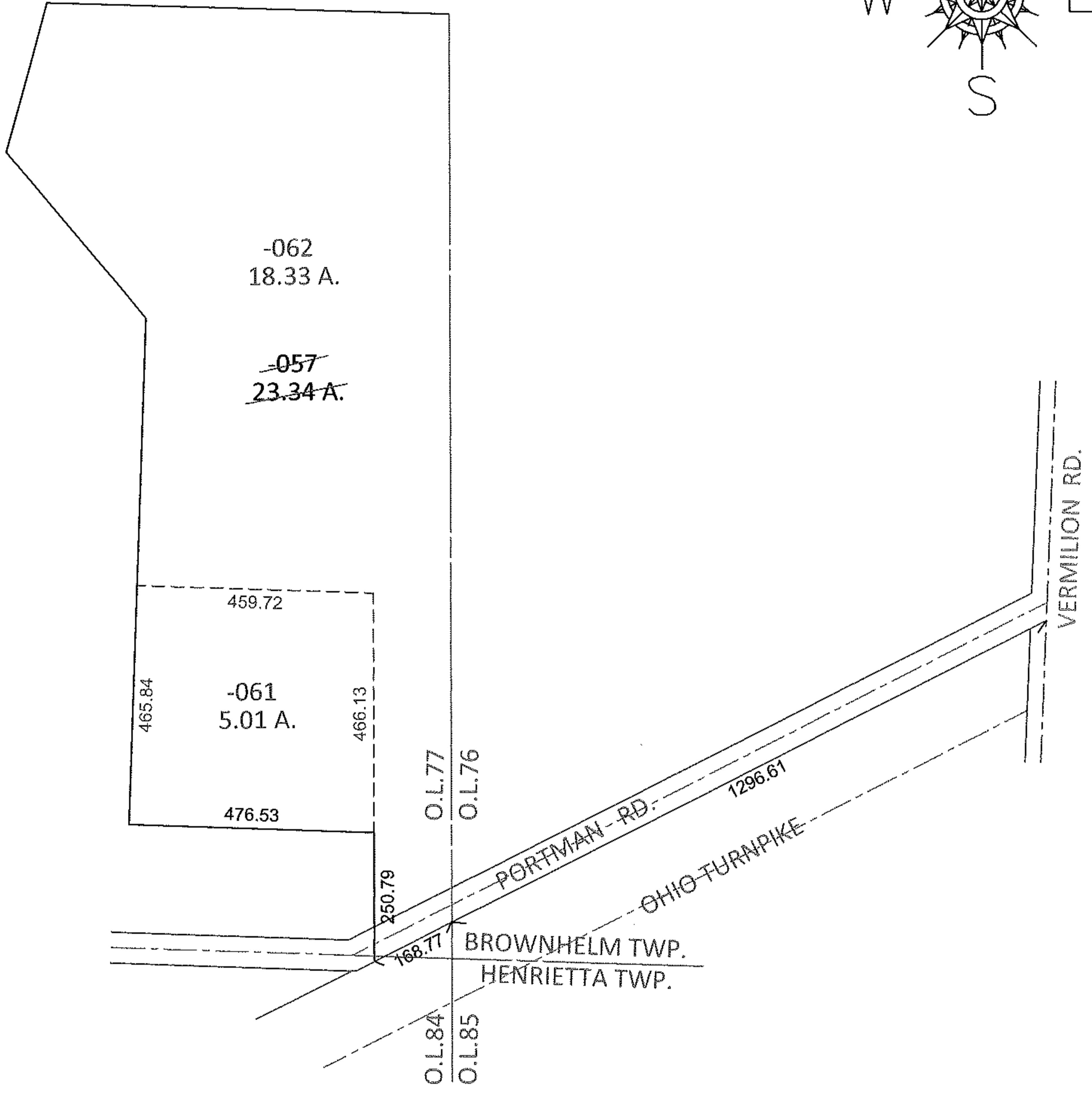
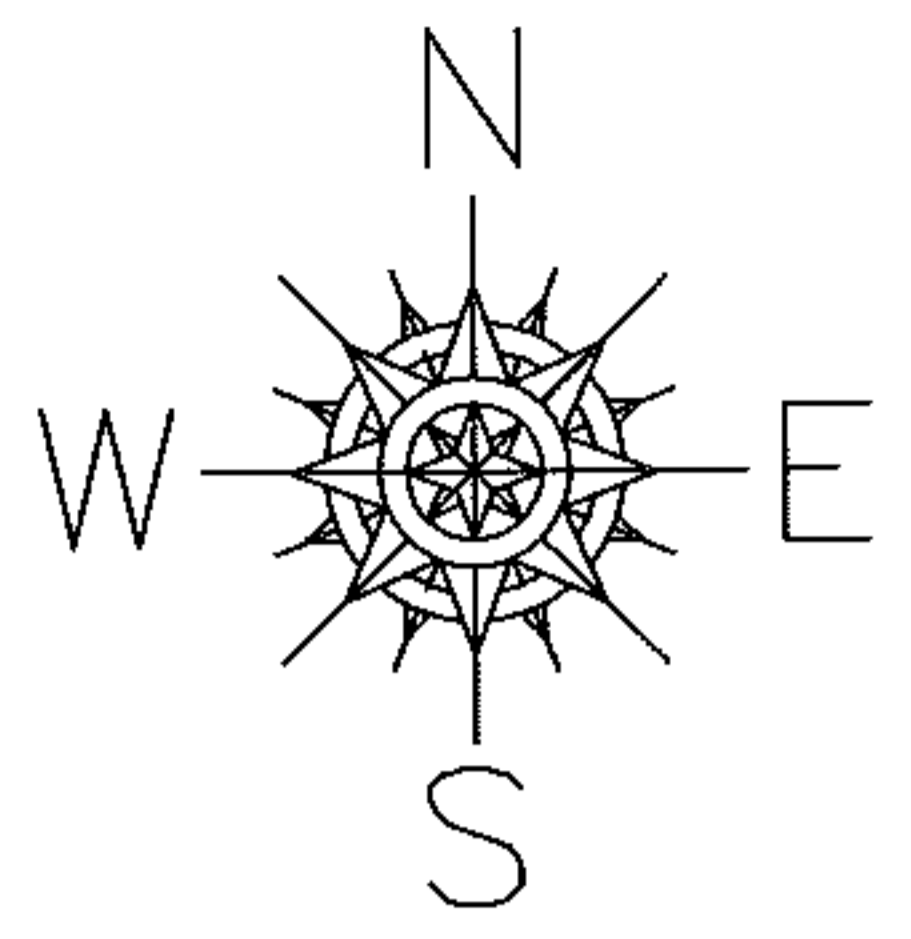


PARENT PARCEL: 01-00-077-000-057
CHILD PARCEL: 01-00-077-000-061, -062
STARTING POINT: INTERSECTION OF NORTH LINE OF OHIO TURNPIKE WITH THE EAST LINE OF O.L.77

12-03012



SPLITS/DEEDS PROCESSED
LORAIN COUNTY TAX MAP DEPARTMENT
226 MIDDLE AVE. ELYRIA, OHIO

SURVEYED BY: PHILLIP A. ROSEBECK
CLOSURE: .01:10,000
MAP PAGE(S): 1-J
APPROVED BY: RRM DATE: 4-13-12
SCALE: 1" = 300 PRIOR INST.: 20060163717