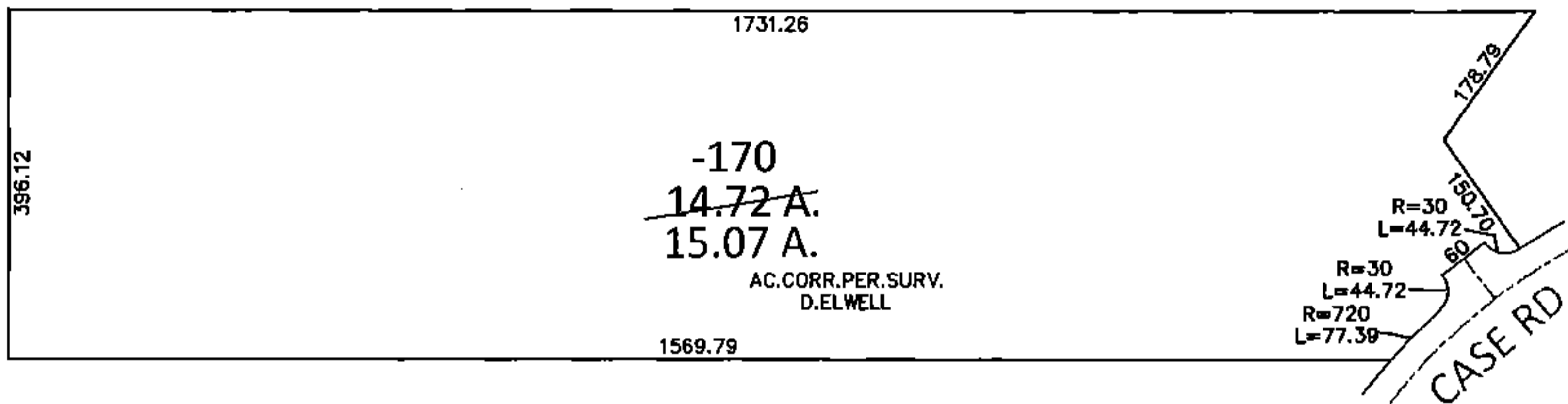
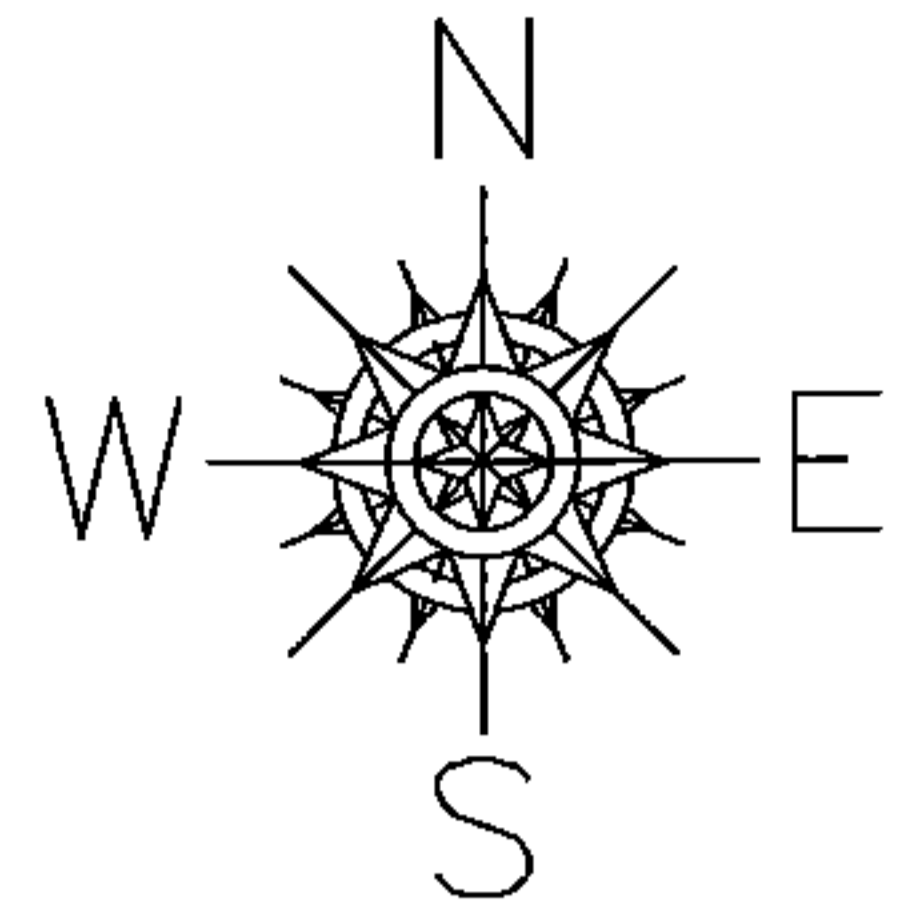


PARENT PARCEL: 04-00-002-101-170

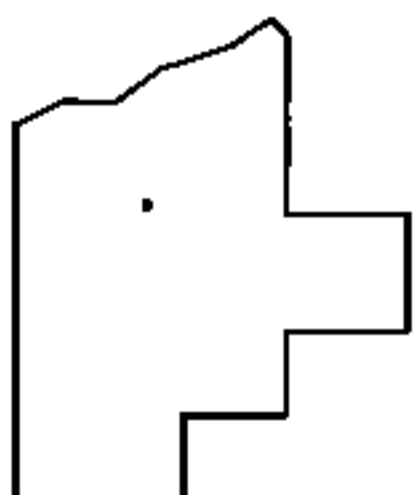
CHILD PARCEL: \_\_\_\_\_

STARTING POINT: \_\_\_\_\_

14-03010-A



ACREAGE CORRECTION  
SEE PLAT VOLUME 83 PAGE 60



SPLITS/DEEDS PROCESSED  
LORAIN COUNTY TAX MAP DEPARTMENT  
226 MIDDLE AVE. ELYRIA, OHIO

SURVEYED BY: DAVID L. ELWELL  
CLOSURE: .01:10,000  
MAP PAGE(S): 4-00-002-E  
APPROVED BY: RRM DATE: 9-2-14  
SCALE: 1"=300 PRIOR INST.: N/A