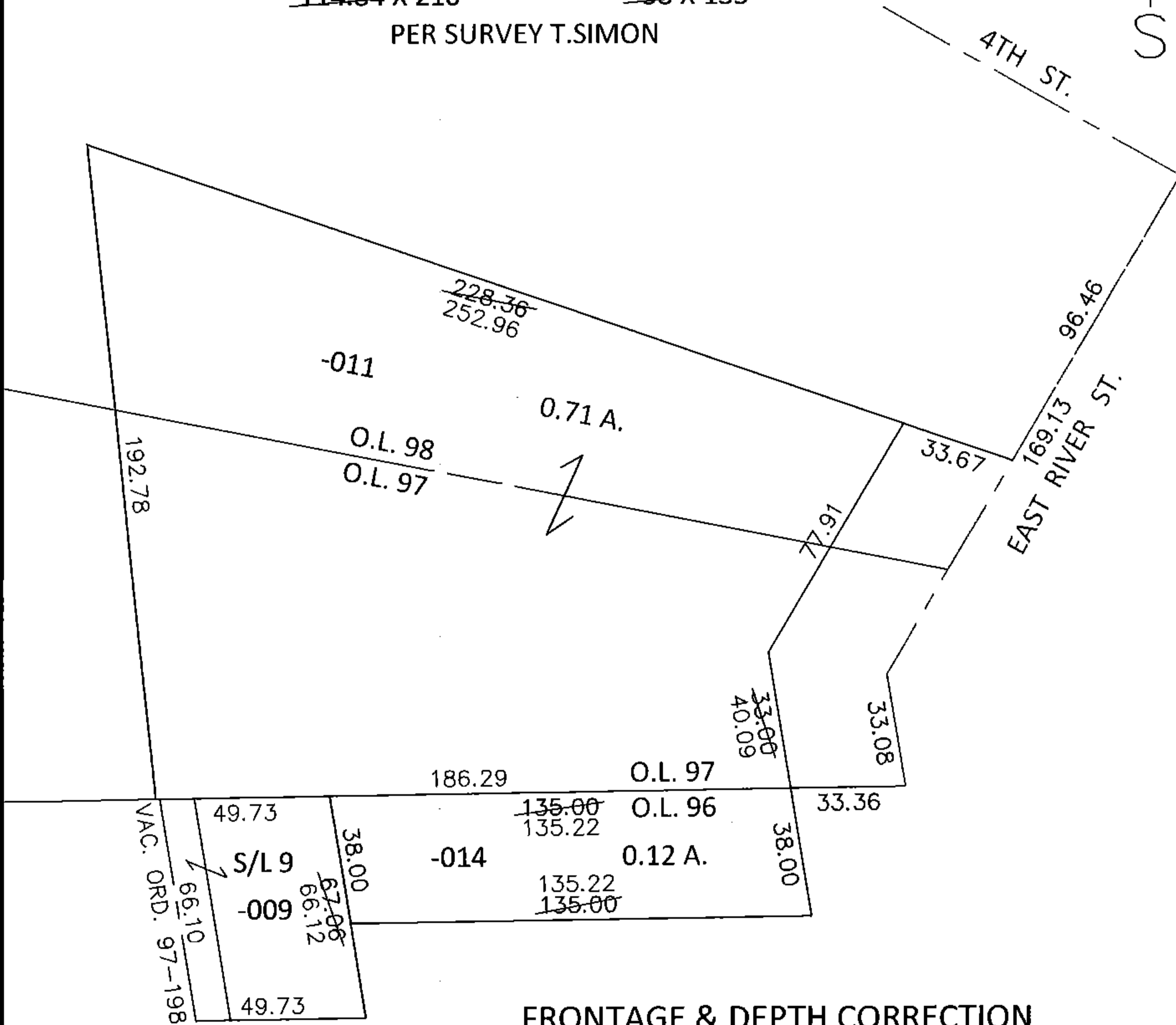
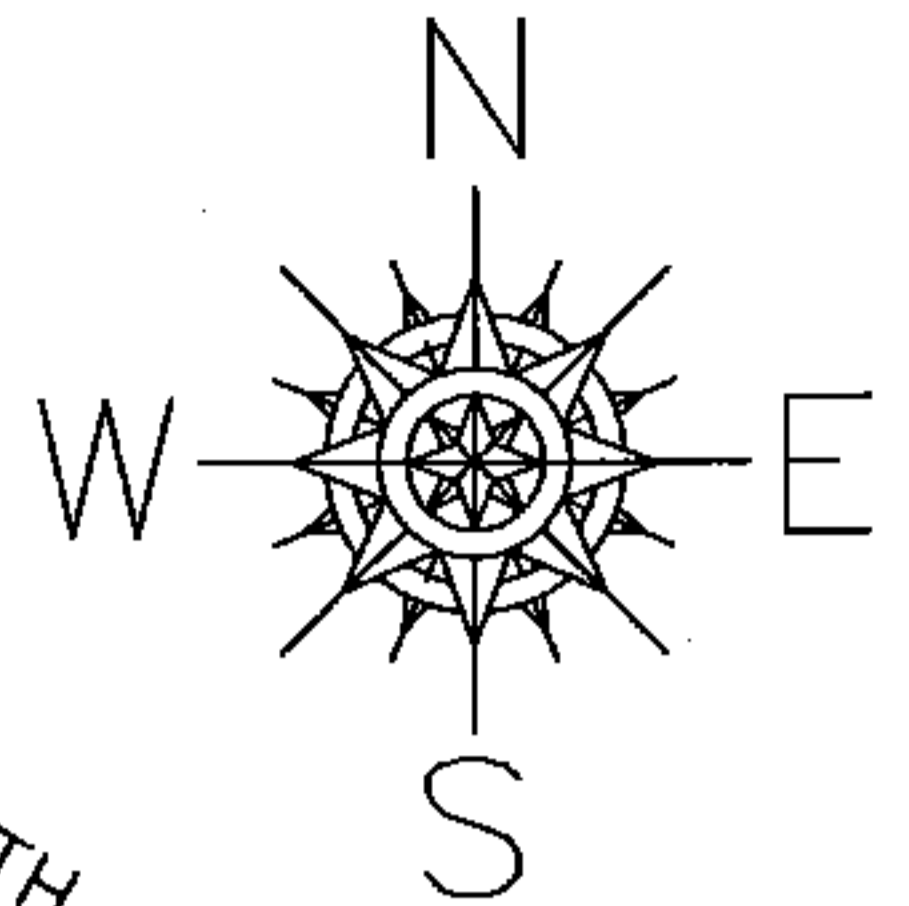


PARENT PARCEL: 06-25-096-000-014, -009, 06-25-098-102-011
 CHILD PARCEL: _____
 STARTING POINT: INTERSECTION OF C/L OF 4TH ST. AND C/L OF EAST RIVER ST.

14-03008-A

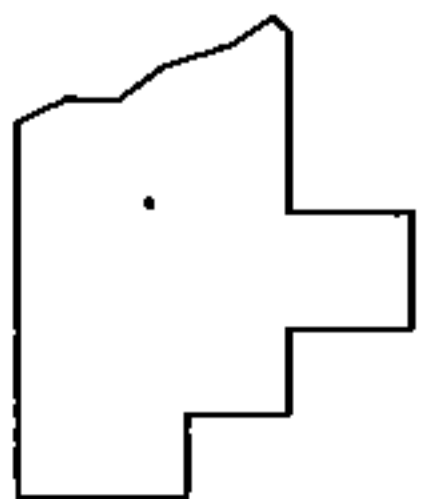
FRONTAGE & DEPTH TO ACREAGE CORRECTION

06-25-098-102-011 06-25-096-000-014
 0.71 A. 0.12 A.
~~114.84 X 210~~ ~~38 X 135~~
 PER SURVEY T.SIMON



FRONTAGE & DEPTH CORRECTION

06-25-096-000-009
 66.12 X 49.73
~~67.06 X 40~~
 PER SURVEY BY T.SIMON & ORD. 97-198



SPLITS/DEEDS PROCESSED
 LORAIN COUNTY TAX MAP DEPARTMENT
 226 MIDDLE AVE. ELYRIA, OHIO

SURVEYED BY: THOMAS A. SIMON
 CLOSURE: .01:10,000
 MAP PAGE(S): 6-120
 APPROVED BY: RRM DATE: 9-2-14
 SCALE: 1"= 50' PRIOR INST.: 20040014414