

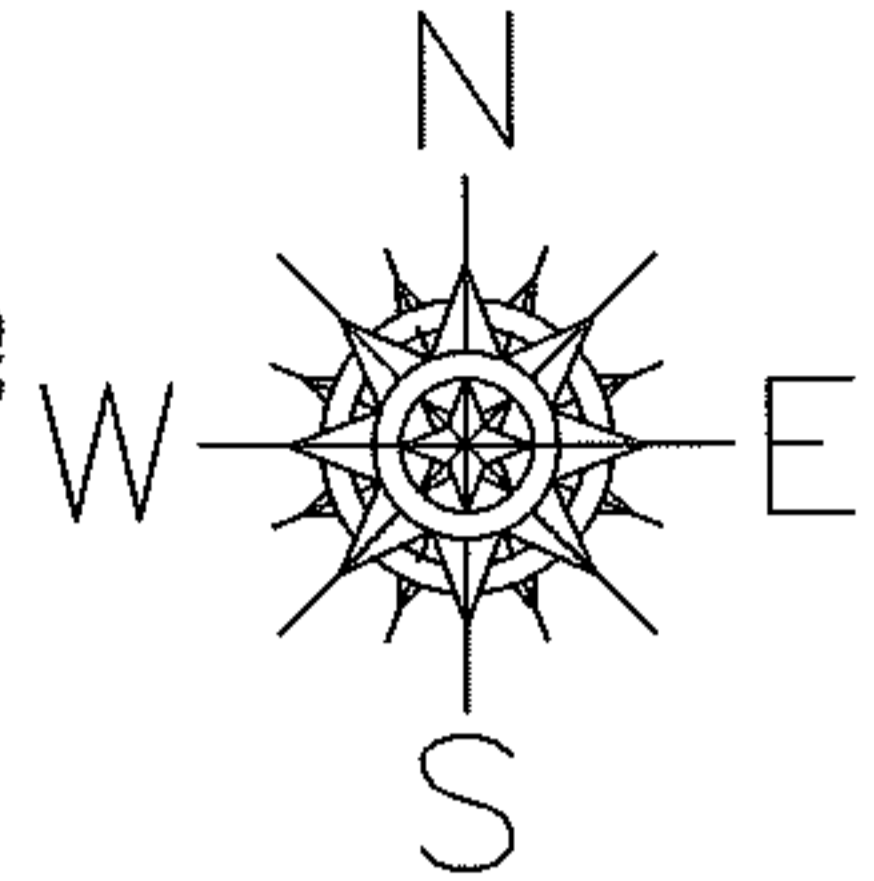
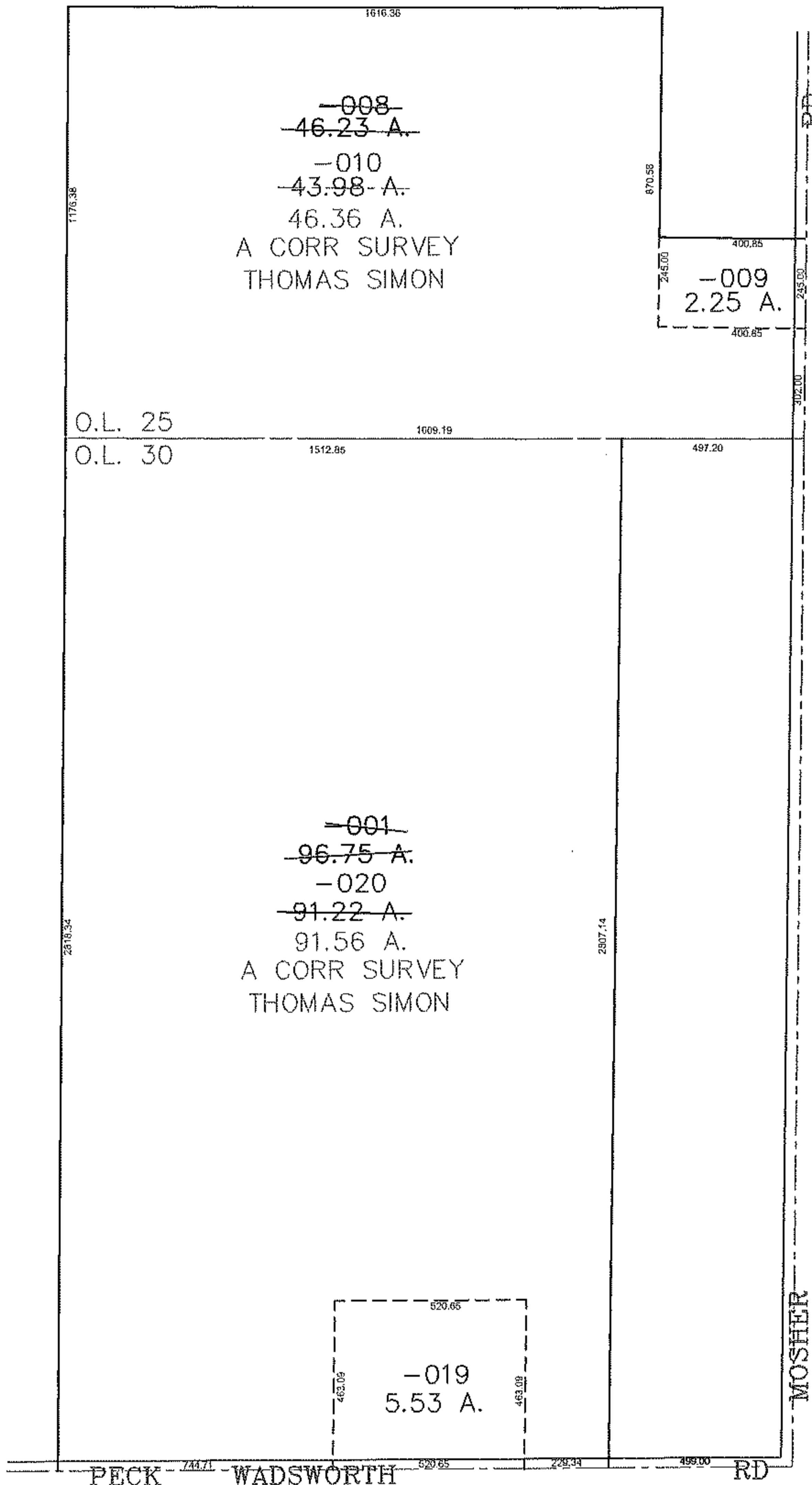
Raster

PARENT PARCEL: 17-08-025-000-008 17-08-030-000-001

CHILD PARCEL: 17-08-025-000-009 THRU -012 17-08-030-000-019, -020

12-03007

STARTING POINT: CENTERLINE OF MOSHER RD & O.L. 25



SPLITS/DEEDS PROCESSED

LORAIN COUNTY TAX MAP DEPARTMENT
226 MIDDLE AVE. ELYRIA, OHIO

SURVEYED BY: THOMAS SIMON

CLOSURE: 0.00 : 10,000

MAP PAGE(S): 17-D

APPROVED BY: JAH DATE: 3-13-2012

SCALE: 1" = 500 PRIOR INSTRUMENT: 20010764102