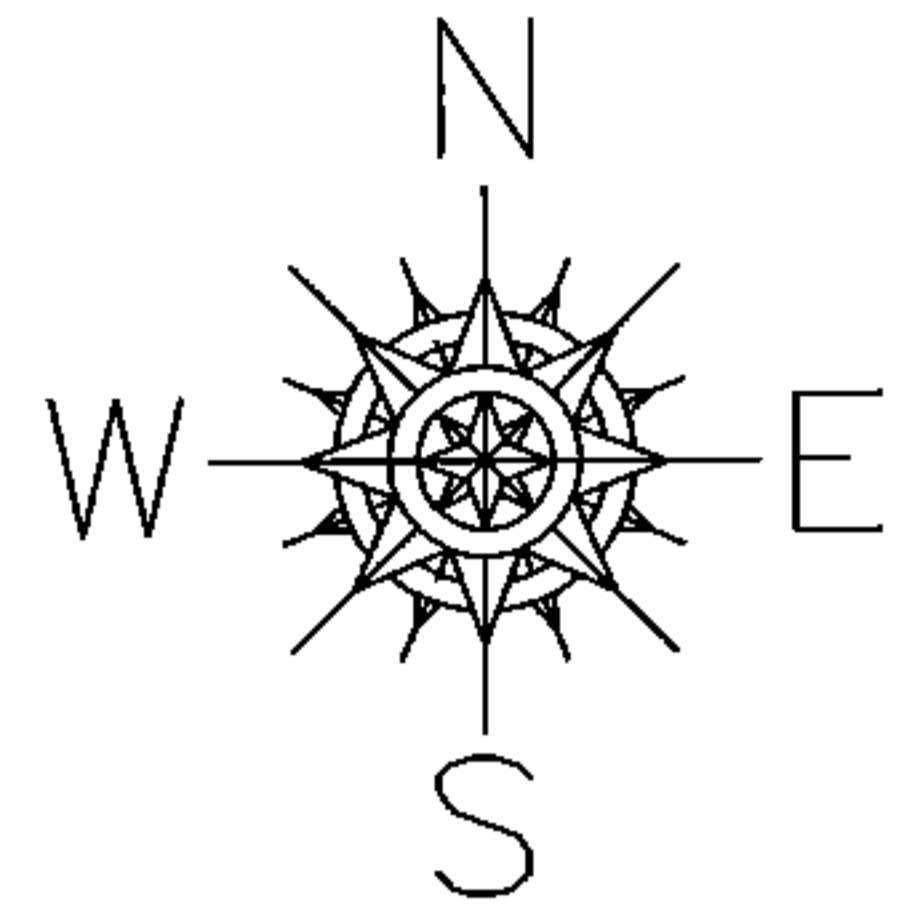


PARENT PARCEL: 09-00-096-113-010

CHILD PARCEL: _____

STARTING POINT: INTERSECTION OF EAST LINE OF S.PLEASANT ST. AND NORTH LINE OF GLADYS SUB.

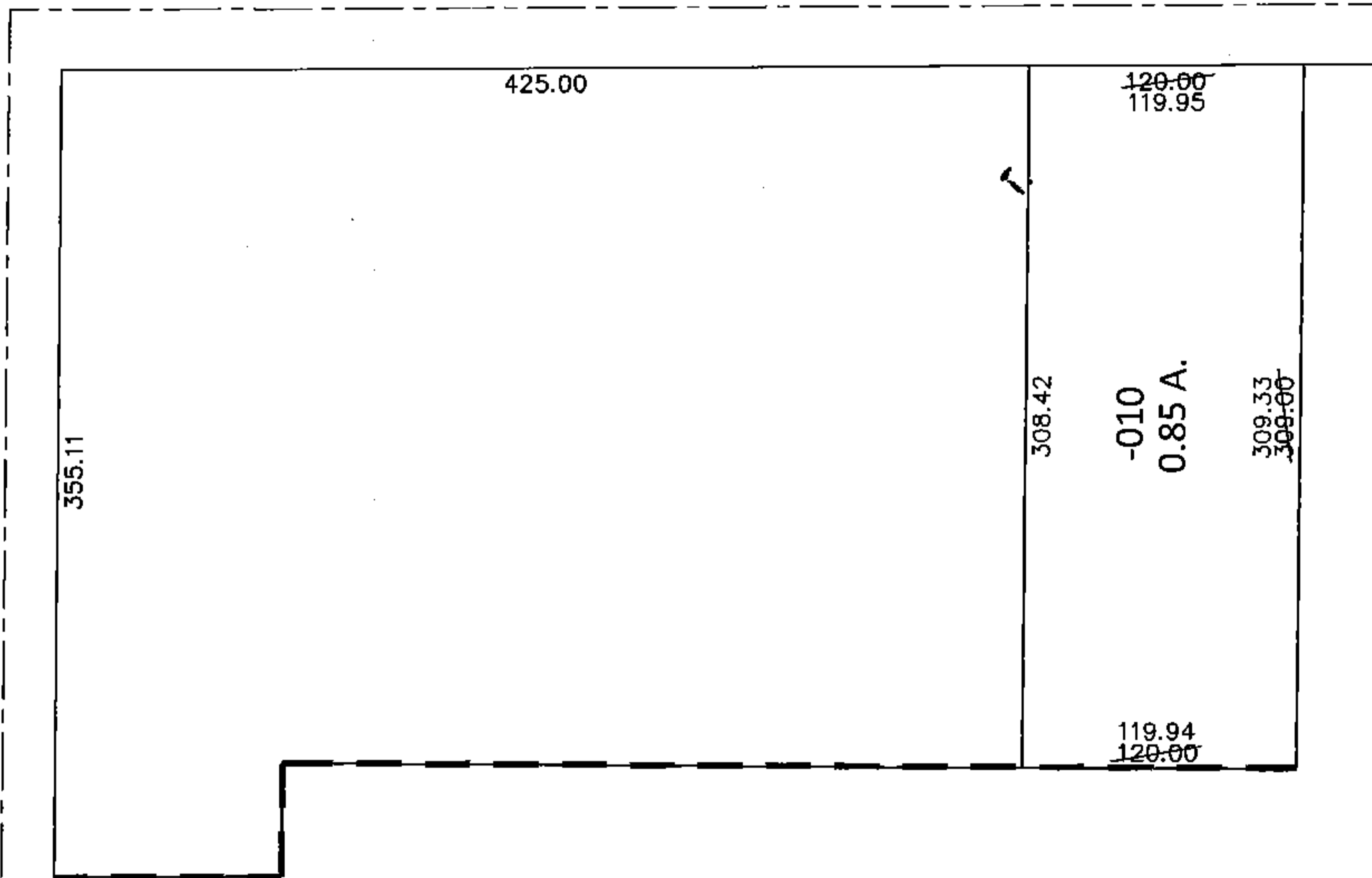
14-03007-D



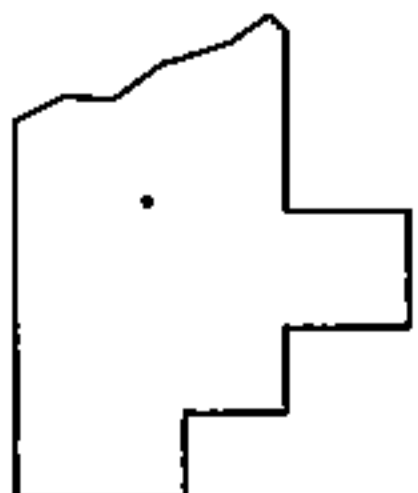
MAP CORRECTION ONLY

SMITH ST.

S.PLEASANT ST.



GLADYS SUB.
VOL.21 PG.46



SPLITS/DEEDS PROCESSED

LORAIN COUNTY TAX MAP DEPARTMENT
226 MIDDLE AVE. ELYRIA, OHIO

SURVEYED BY: BRENT D. ANDERSON

CLOSURE: .01:10,000

MAP PAGE(S): 9-00-096-A

APPROVED BY: RRM DATE: 9-29-14

SCALE: 1"= 100 PRIOR INST.: 20140504021