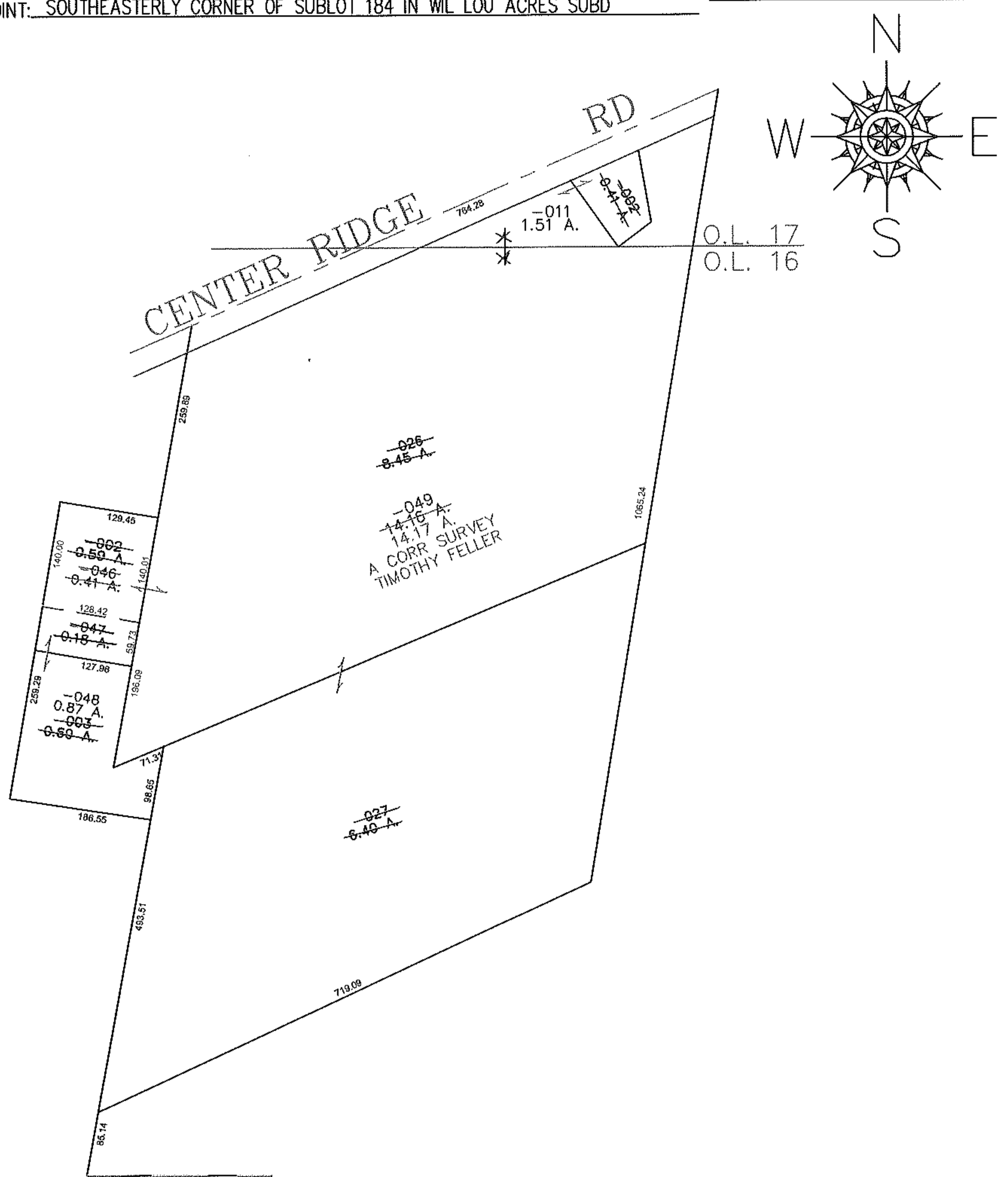


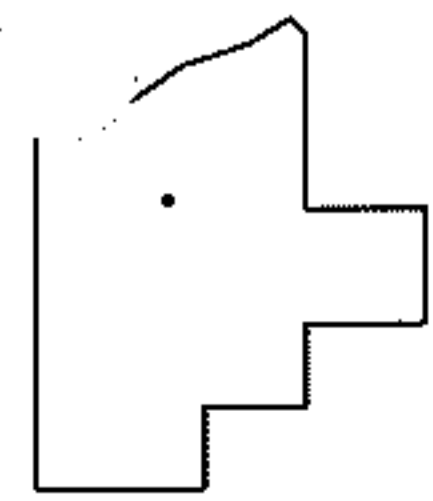
RMS/ER

PARENT PARCEL: 07-00-016-112-002, -003, 026, 027 07-00-017-130-002
CHILD PARCEL: 07-00-016-112-046 THRU -049 07-00-017-130-011
STARTING POINT: SOUTHEASTERLY CORNER OF SUBLOT 184 IN WIL LOU ACRES SUBD

12-03003



WIL LOU ACRES SUBD NO 3
VOL 25 PG 63



SPLITS/DEEDS PROCESSED
LORAIN COUNTY TAX MAP DEPARTMENT
226 MIDDLE AVE. ELYRIA, OHIO

SURVEYED BY: TIMOTHY FELLER
CLOSURE: 0.00 : 10,000
MAP PAGE(S): 07-00-016-B 0700017-D
APPROVED BY: JAH DATE: 2/29/2012
SCALE: 1" = 200 PRIOR INSTRUMENT: DV 1222/349