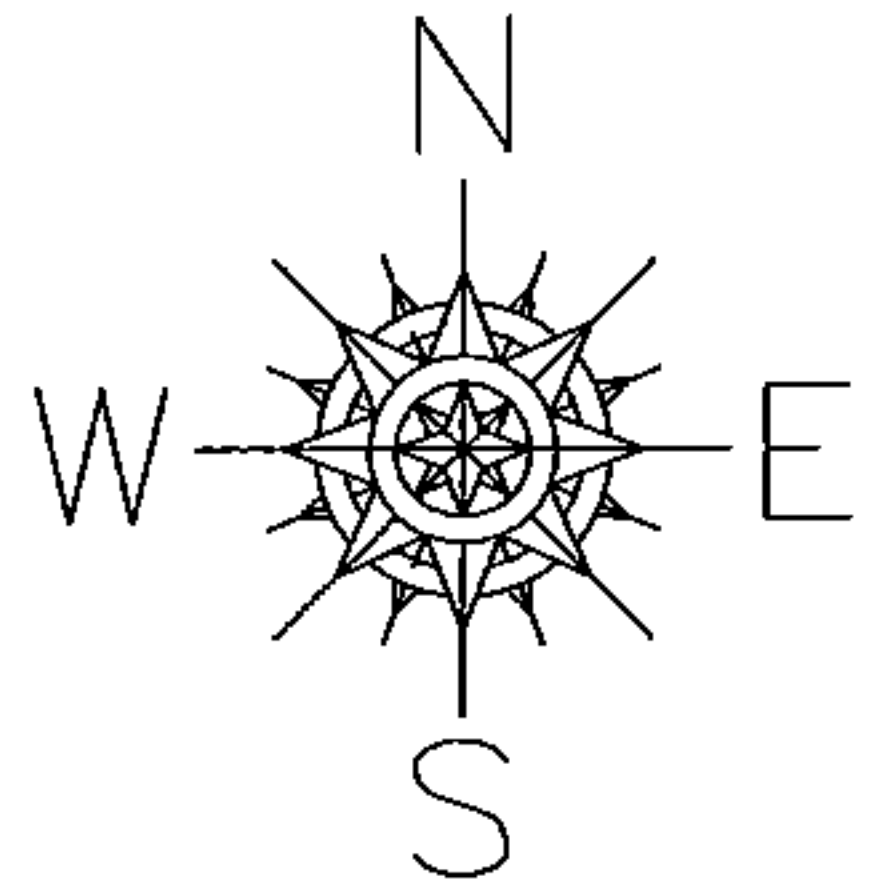


PARENT PARCEL: 05-00-094-104-004

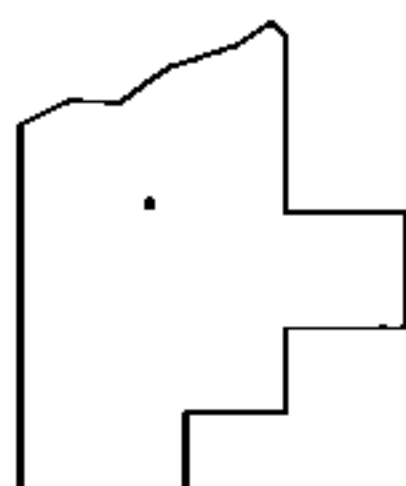
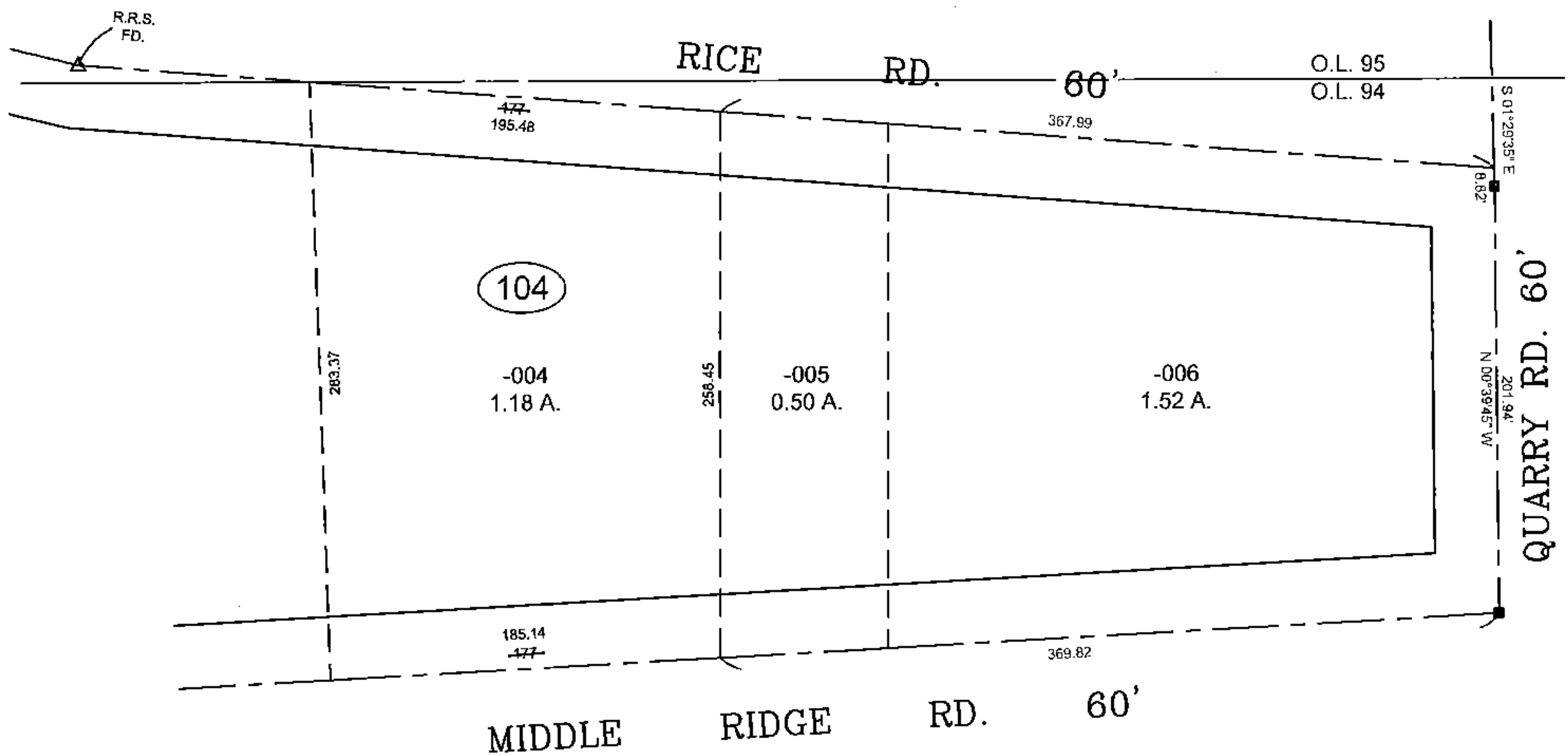
CHILD PARCEL: XX-XX-XXX-XXX-XXX

STARTING POINT: CL OF RICE RD. & CL OF QUARRY RD.

14-03003-C



MAP CORRECTION ONLY



SPLITS/DEEDS PROCESSED

LORAIN COUNTY TAX MAP DEPARTMENT
226 MIDDLE AVE. ELYRIA, OHIO

SURVEYED BY: SEAN A. BOLAND

CLOSURE: 0.01 : 10.000

MAP PAGE(S): 05-00-094

APPROVED BY: TJS DATE: 8/26/14

SCALE: 1" = 100' PRIOR INSTRUMENT: 20070226340