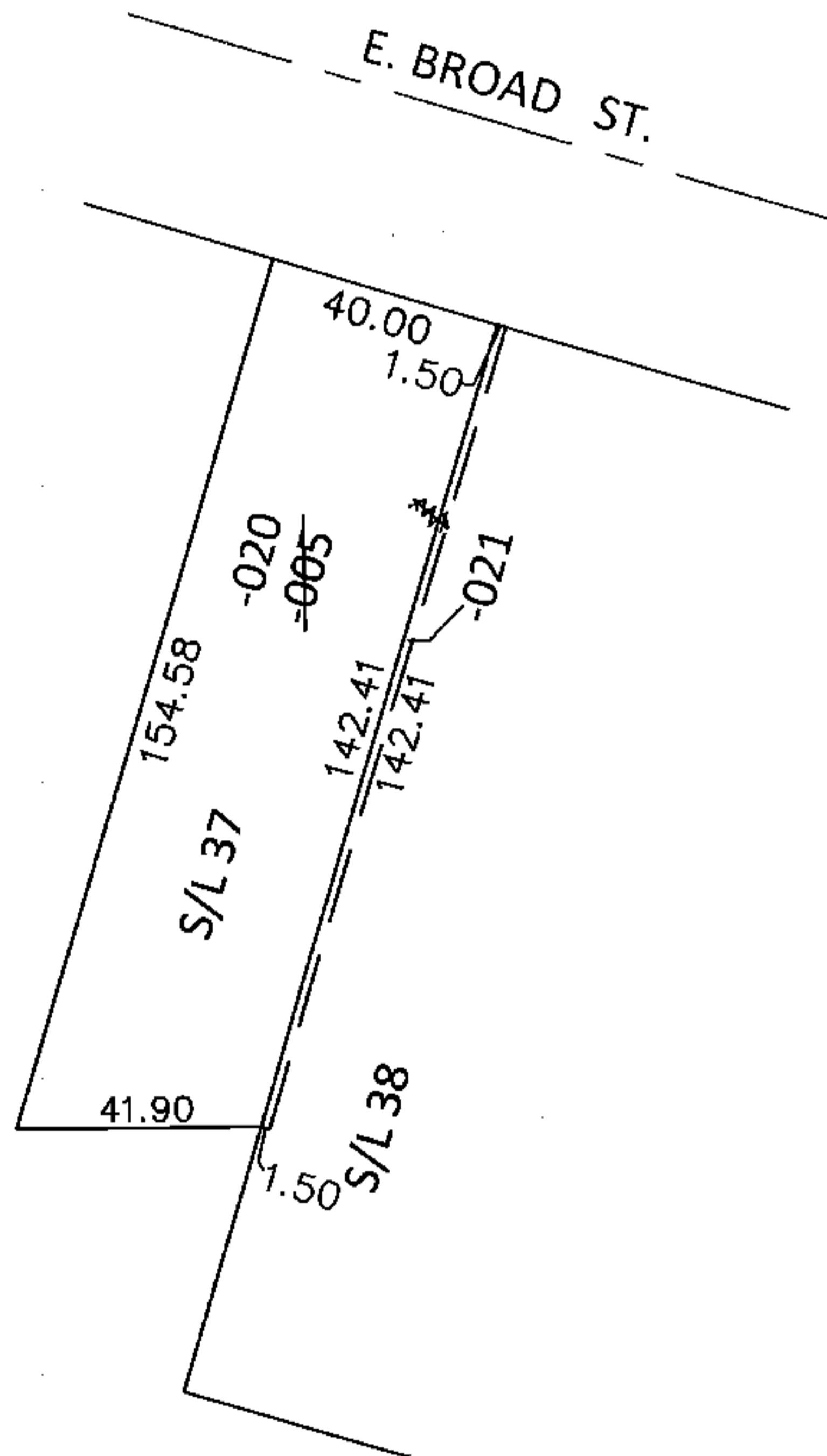
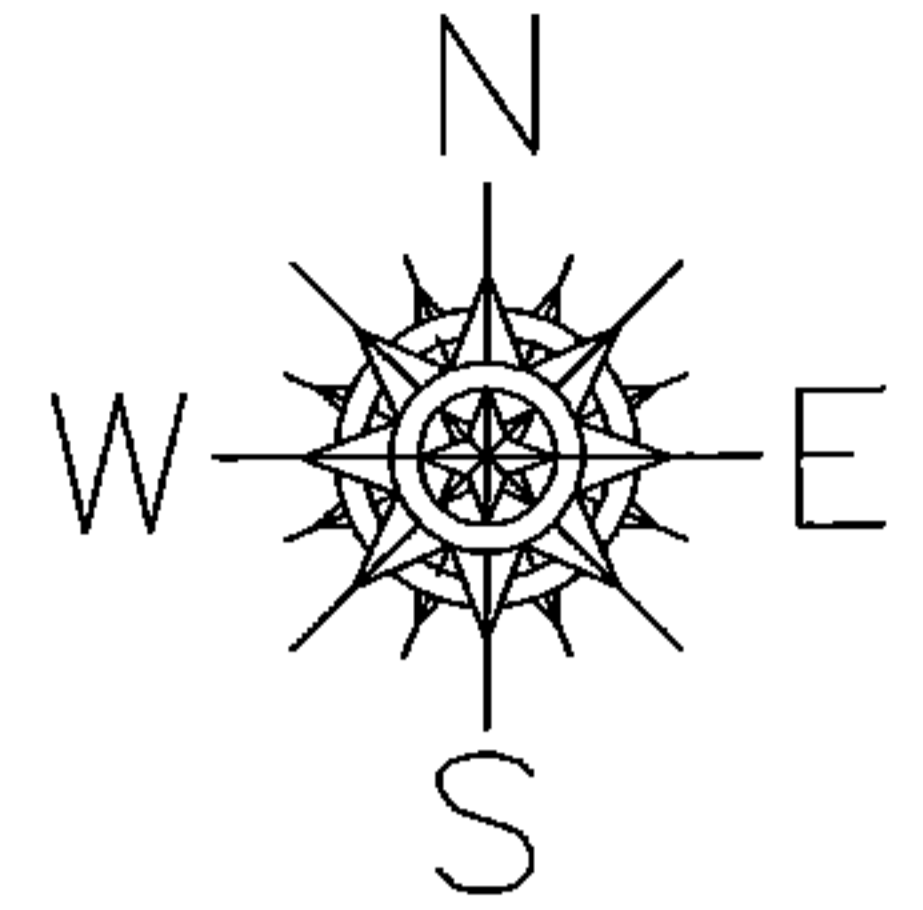


PARENT PARCEL: 06-25-015-112-005

CHILD PARCEL: 06-25-015-112-020, -021

STARTING POINT: S/L 37 & PART OF S/L 38 IN EAST BROAD STREET HEIGHTS (VOL.10 PG.9)

14-03000-X

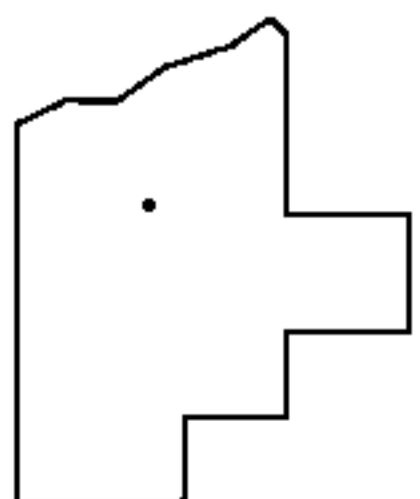


UNCOMBINATION

~~06-25-015-112-005~~
~~41.50 X 154.58~~

06-25-015-112-020
40.00 X 154.58

06-25-015-112-021
1.50 X 142.41



SPLITS/DEEDS PROCESSED

LORAIN COUNTY TAX MAP DEPARTMENT
226 MIDDLE AVE. ELYRIA, OHIO

SURVEYED BY: N/A

CLOSURE: N/A

MAP PAGE(S): 6-123

APPROVED BY: RRM DATE: 8-21-14

SCALE: 1"= 50' PRIOR INST.: 20140513510