

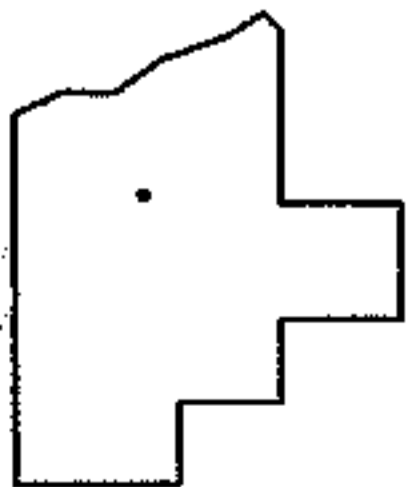
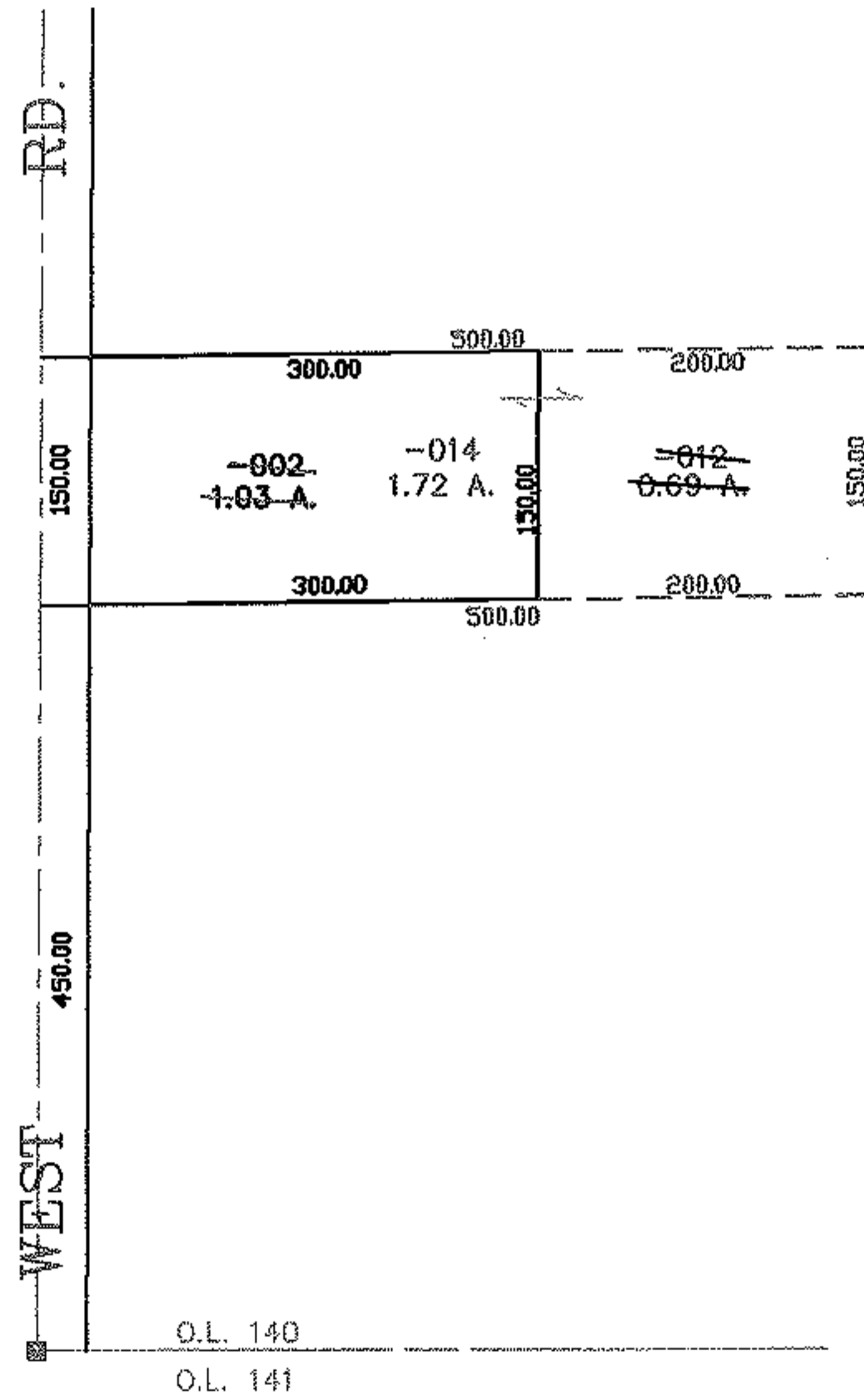
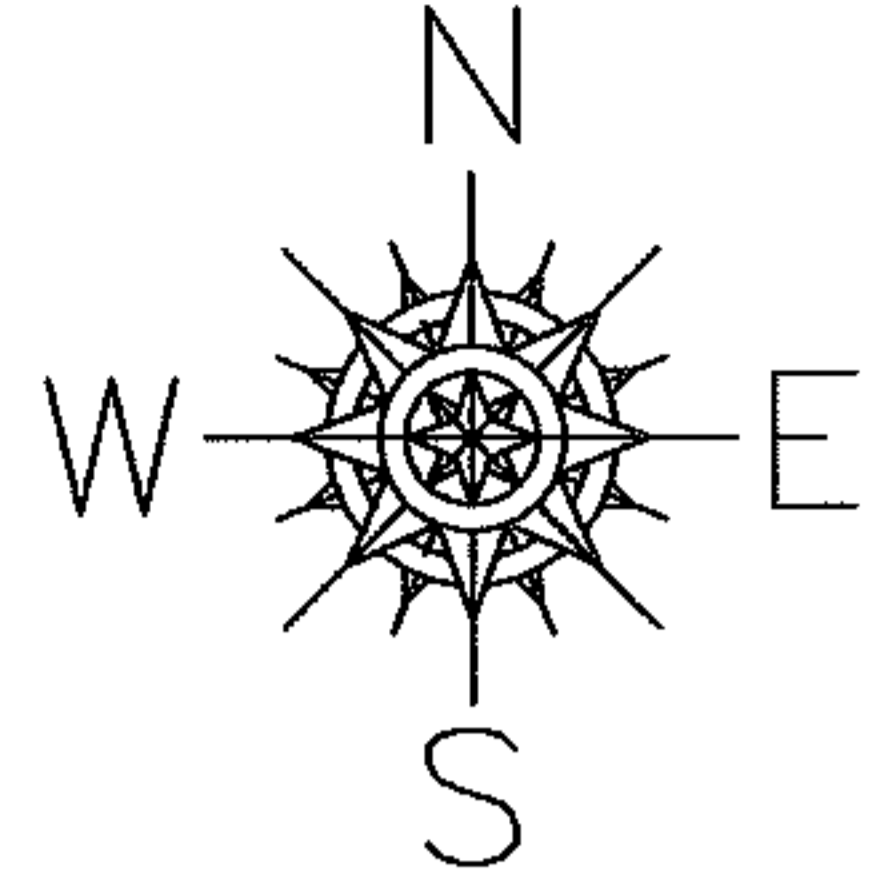
RASTER

PARENT PARCEL: 14-00-140-0200-011, -002

CHILD PARCEL: 14-00-140-000-012 THRU -014

STARTING POINT: CENTERLINE OF WEST RD. & O.L. 140

NO. 01553



SPLITS/DEEDS PROCESSED
 LORAIN COUNTY TAX MAP DEPARTMENT
 226 MIDDLE AVE. ELYRIA, OHIO

SURVEYED BY: THOMAS A. SIMON
 CLOSURE: 0.00 ; 10.000
 MAP PAGE(S): 14-H
 APPROVED BY: JAH DATE: 12-19-03
 SCALE: 1" = 200 PRIOR INSTRUMENT: 20030972263