

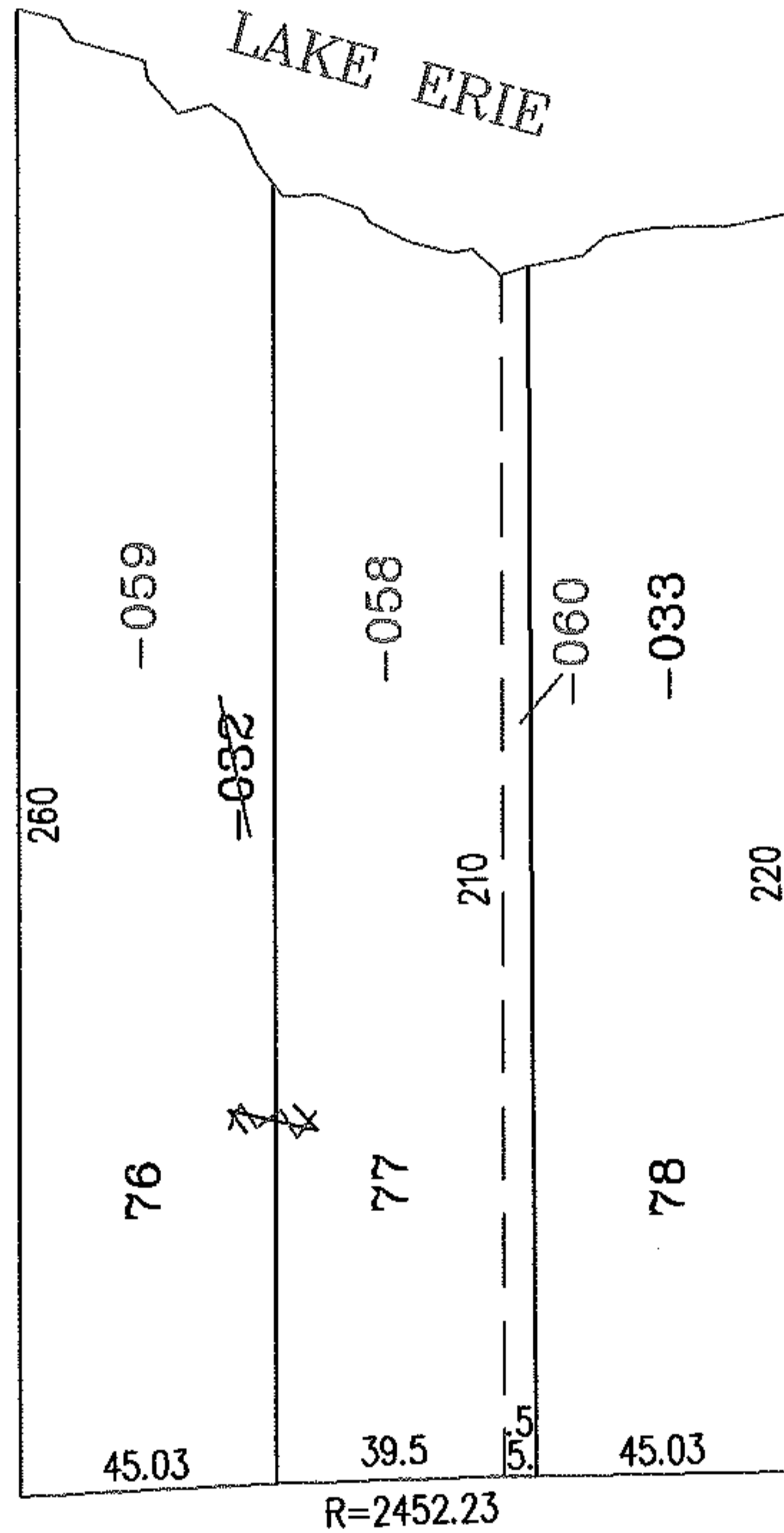
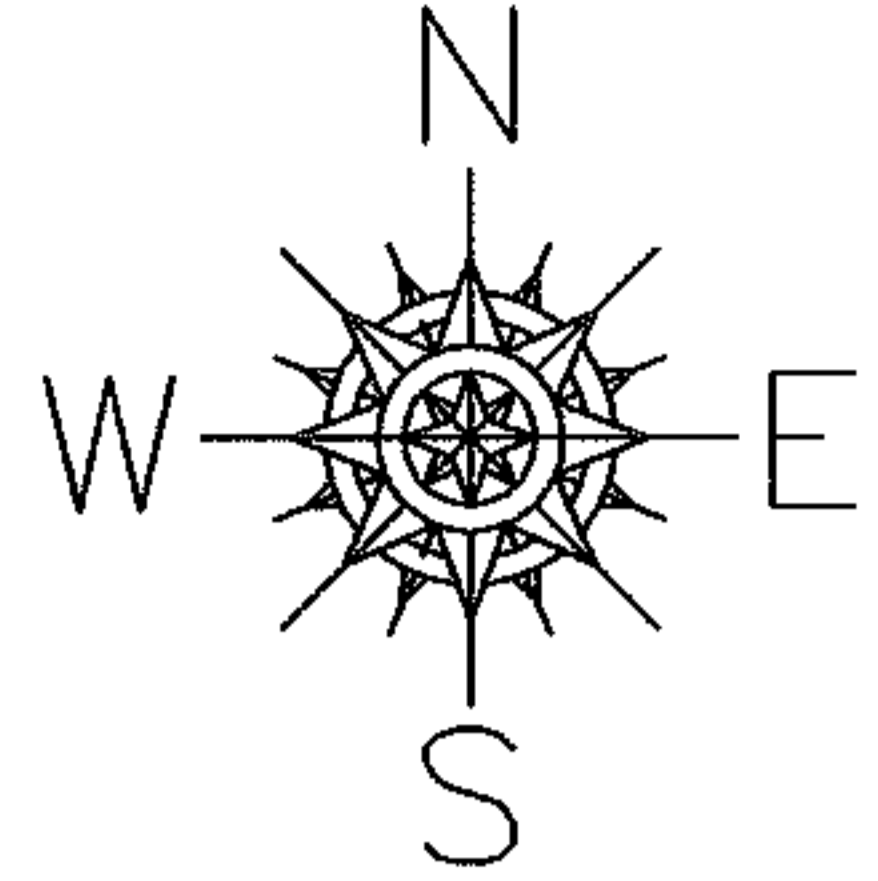
RASTER

PARENT PARCEL: 01-00-003-101-032

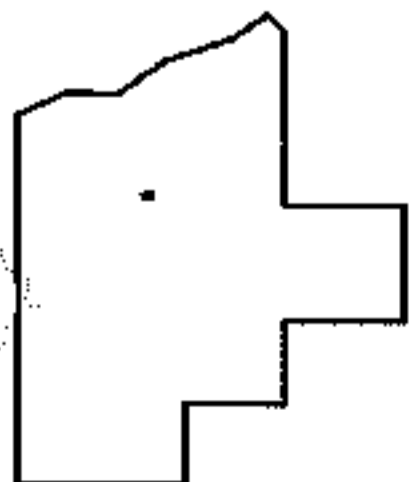
CHILD PARCEL: 01-00-003-101-058 THRU -060

NO. 01552

STARTING POINT: SOUTHWEST CORNER OF S/L 76 IN VERMILION-ON-THE-LAKE SUB.(VOL.10 PG.18)



EDGEWATER BLVD.



SPLITS/DEEDS PROCESSED

LORAIN COUNTY TAX MAP DEPARTMENT
226 MIDDLE AVE. ELYRIA, OHIO

SURVEYED BY:	M.G.HURA
CLOSURE:	N/A
MAP PAGE(S):	01-00-003-B
APPROVED BY:	RRM DATE: 2-27-04
SCALE:	1" = 50' PRIOR INSTRUMENT: 980578272