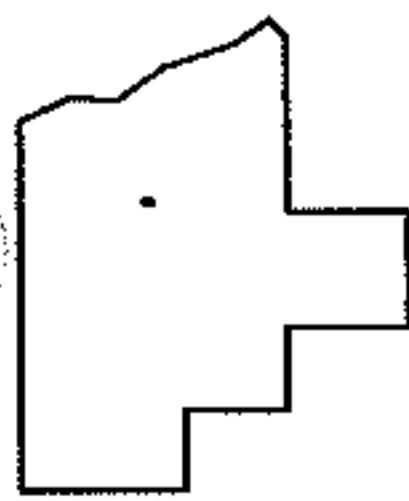
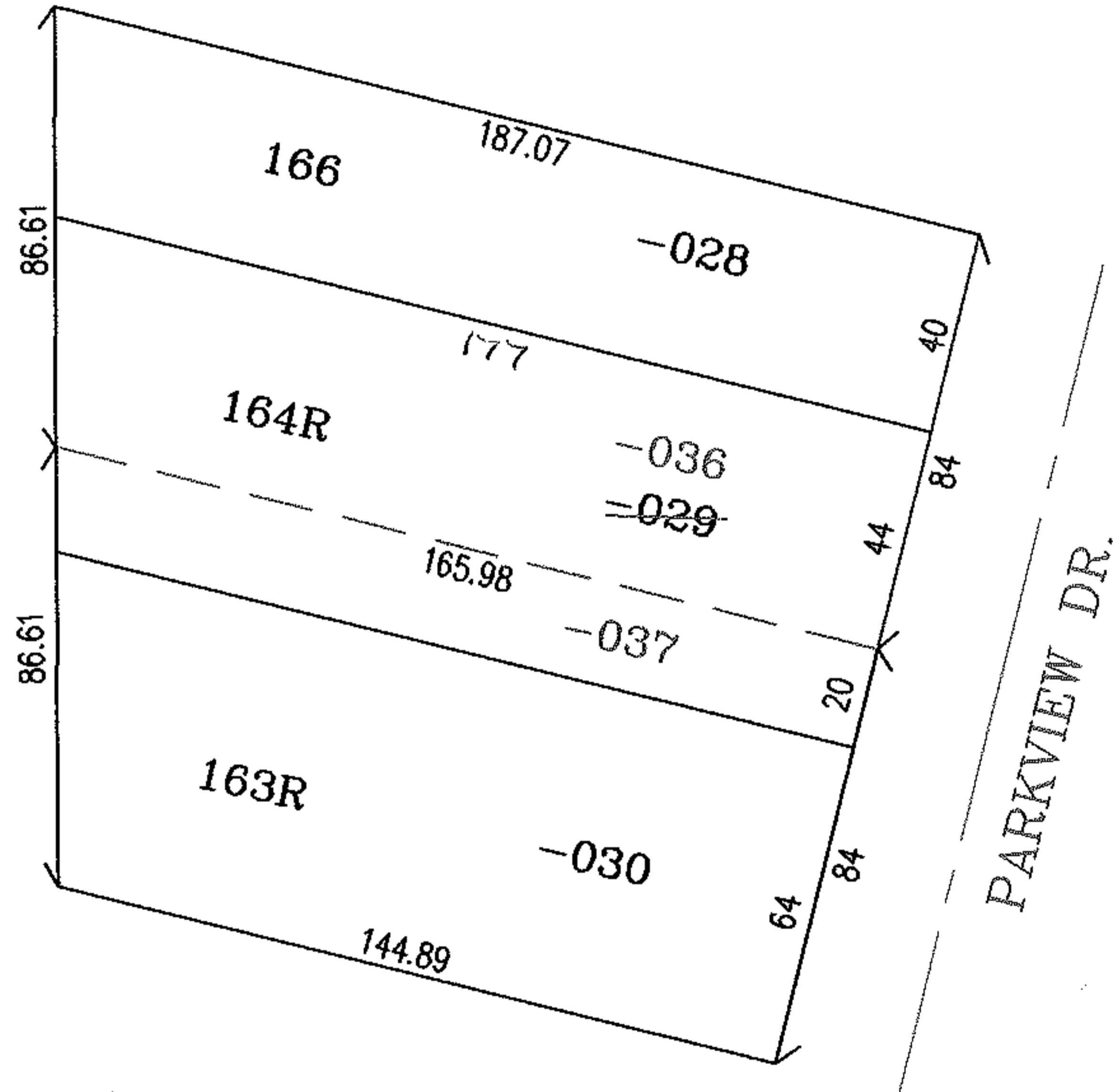
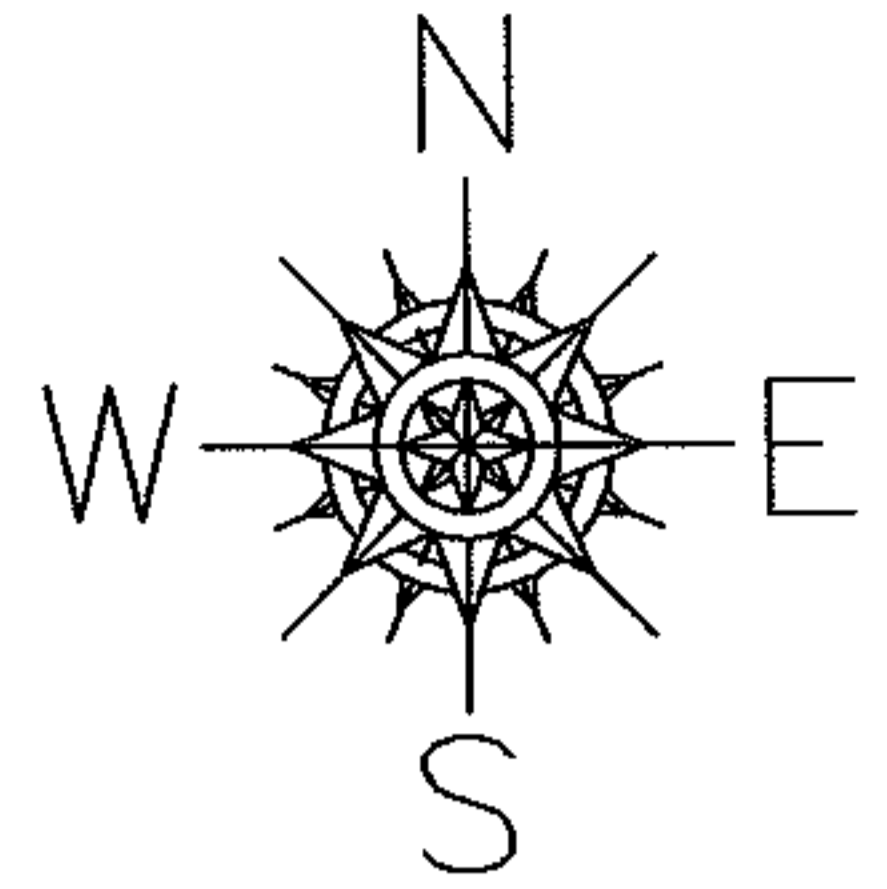


RASTER

PARENT PARCEL: 03-00-036-121-028 THRU -029  
CHILD PARCEL: 03-00-036-121-036,-037  
STARTING POINT: NORTHEAST CORNER OF S/L 162R IN REPLAT OF SHORE SUB.  
&BUCKEYE COUNTRY CLUB(VOL.22 PGS.69A-69D)

NO. 01543



SPLITS/DEEDS PROCESSED

LORAIN COUNTY TAX MAP DEPARTMENT  
226 MIDDLE AVE. ELYRIA, OHIO

SURVEYED BY: DANE A. HAPONEK  
CLOSURE: .00:10.000  
MAP PAGE(S): 3-00-036-A  
APPROVED BY: RRM DATE: 12-8-03  
SCALE: 1"= 50 PRIOR INSTRUMENT: 200304942914