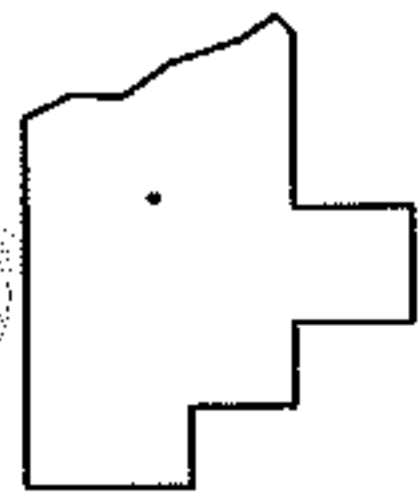
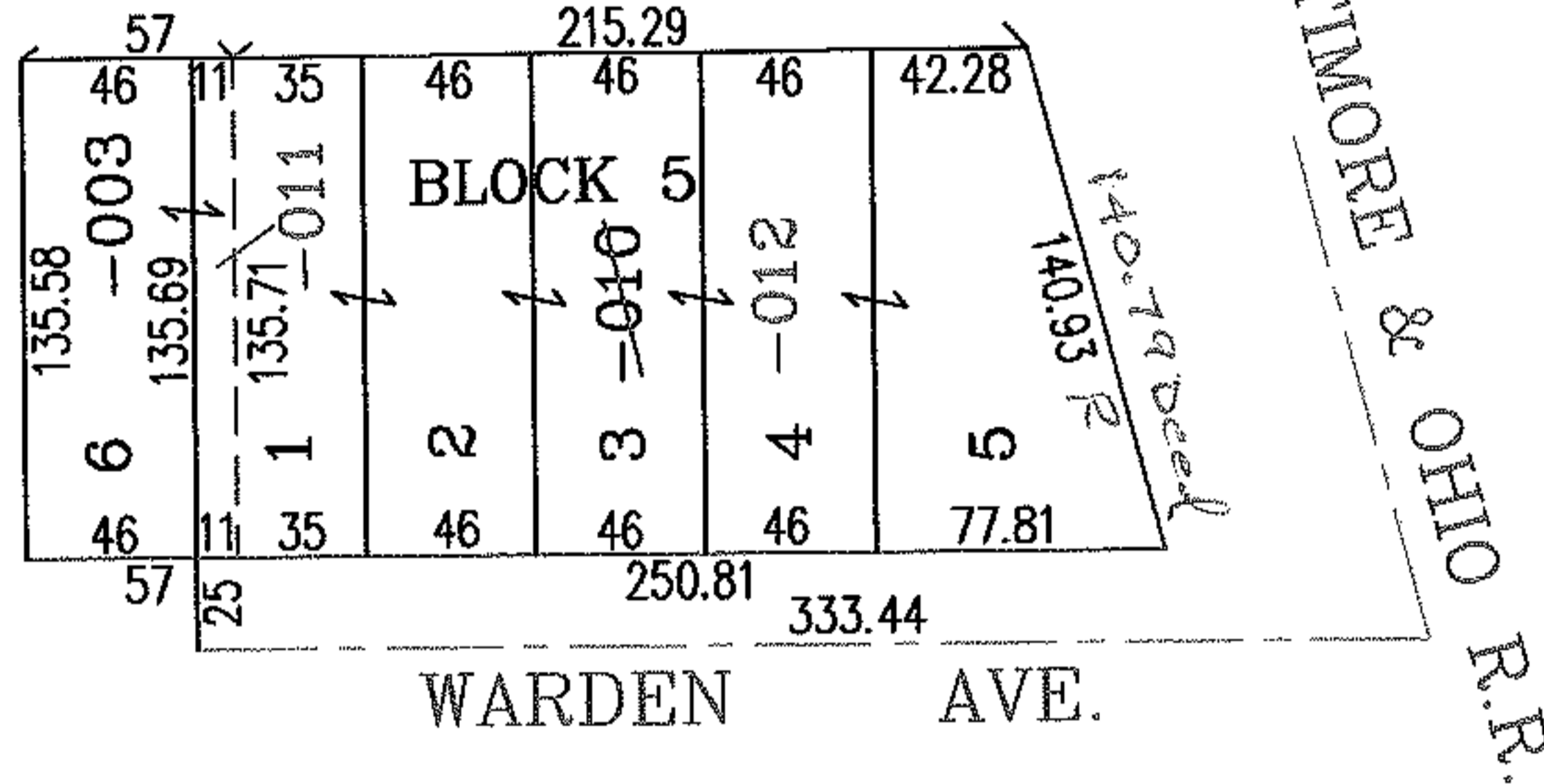
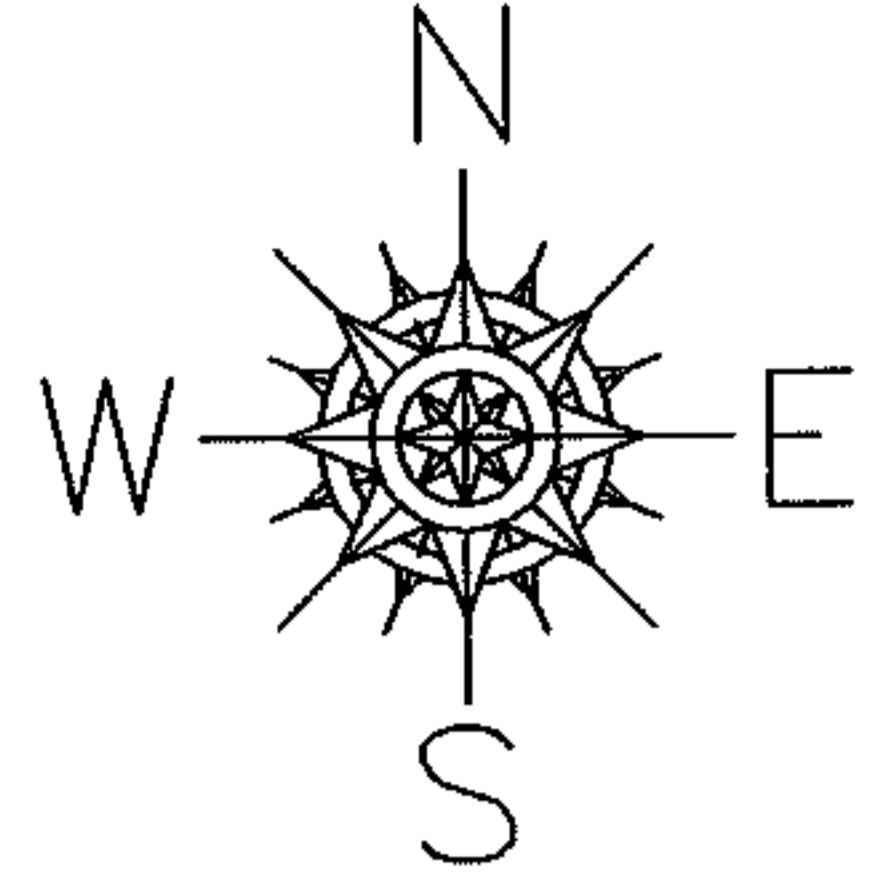


PARENT PARCEL: 06-24-034-104-003,-010

CHILD PARCEL: 06-24-034-104-011,-012

STARTING POINT: INTERSECTION OF C/L OF WARDEN AVE AND C/L OF BALTIMORE & OHIO R.R.

NO. 01533



SPLITS/DEEDS PROCESSED

LORAIN COUNTY TAX MAP DEPARTMENT
226 MIDDLE AVE. ELYRIA, OHIO

SURVEYED BY: XXXXXXXXXX
 CLOSURE: .00:10.000
 MAP PAGE(S): 6-62
 APPROVED BY: RRM DATE: 12-4-03
 SCALE: 1" = 100' PRIOR INSTRUMENT: