

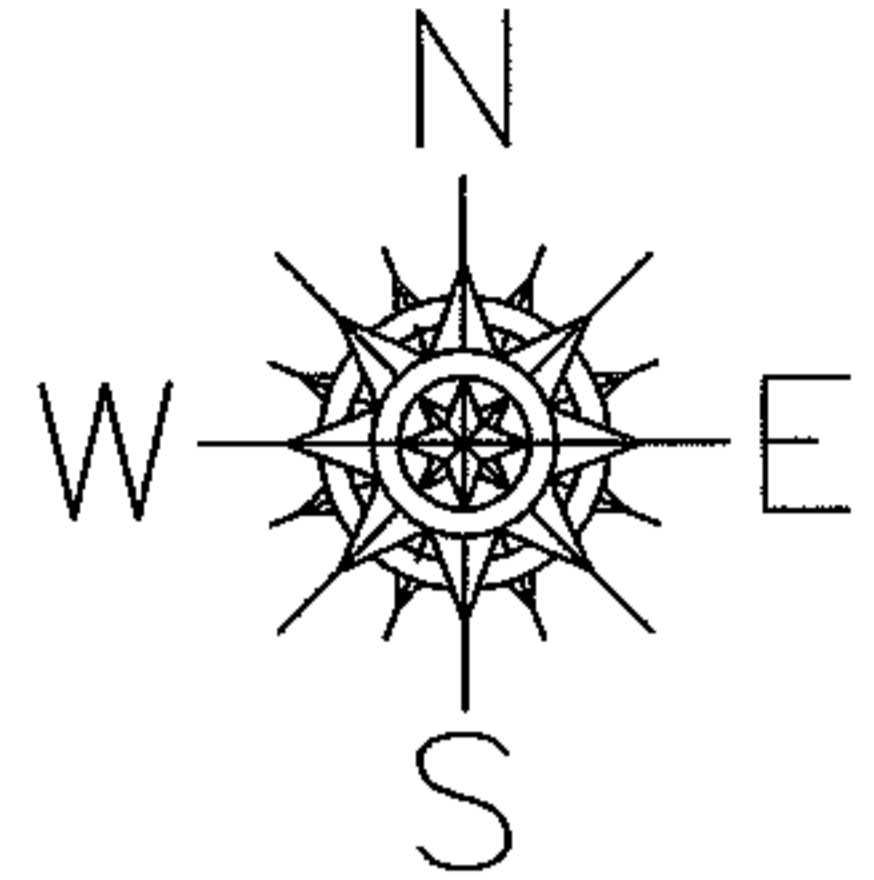
RASTER

PARENT PARCEL: 06-24-026-107-006 & -017

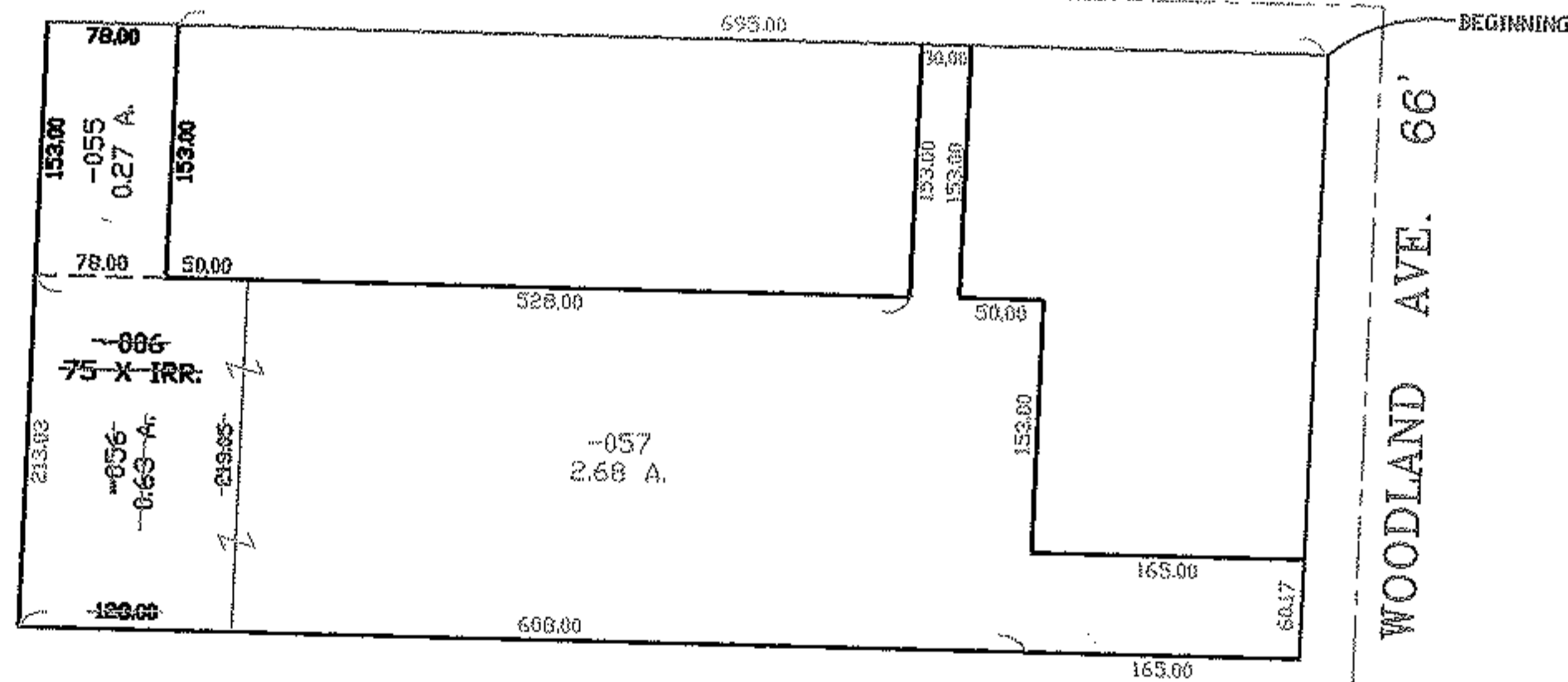
CHILD PARCEL: 06-24-026-107-055 THRU -057

STARTING POINT: 1" PIPE, N.E. CORNER OF S\L 180 OF BRAMAN'S SUB.

NO. 01517

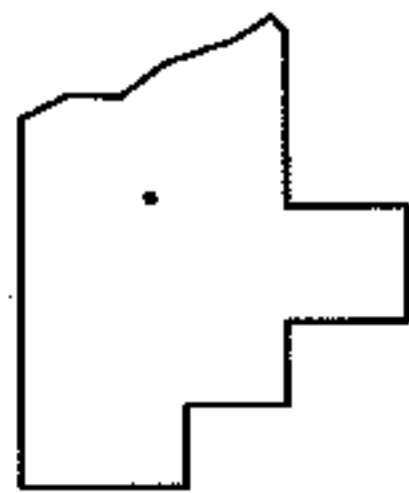


HIGH ST. 60'



PRIOR INSTRUMENT: DV 707/499

PRIOR INSTRUMENT: OR 246/928



SPLITS/DEEDS PROCESSED

LORAIN COUNTY TAX MAP DEPARTMENT
226 MIDDLE AVE. ELYRIA, OHIO

SURVEYED BY: CHRISTOPHER M. HIRZEL

CLOSURE: 0.02 : 10,000

MAP PAGE(S): 6-79

APPROVED BY: TJS DATE: 11/06/03

SCALE: 1" = 200'