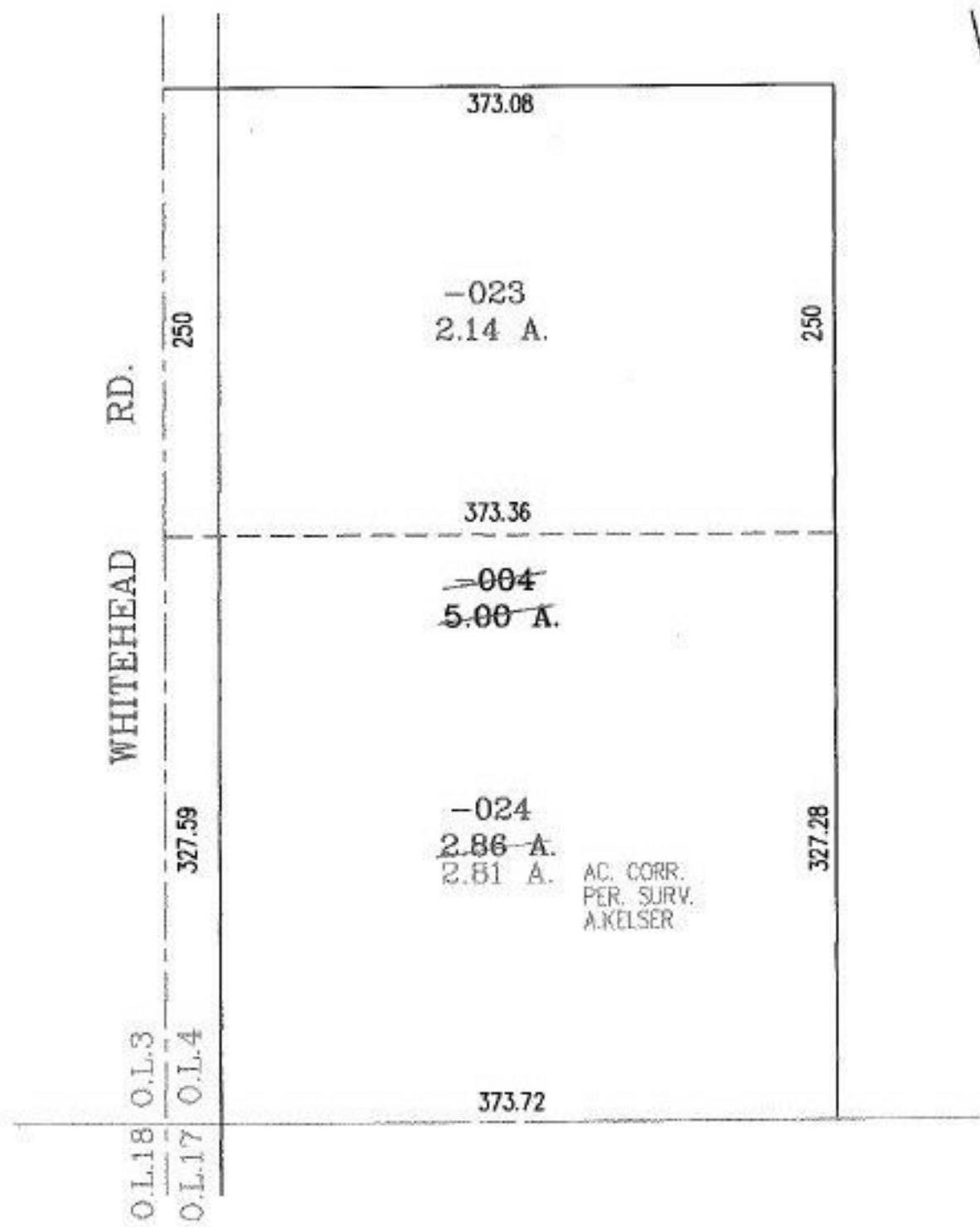
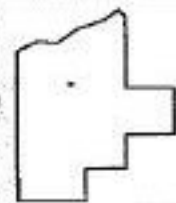


PARENT PARCEL: 15-00-004-000-004
CHILD PARCEL: 15-00-004-000-023, -024
STARTING POINT: NORTHWEST CORNER OF O.L. 17 AND THE C/L OF WHITEHEAD RD.

NO. 01479



AC. CORR.
PER. SURV.
A. KELSER



SPLITS/DEEDS PROCESSED

LORAIN COUNTY TAX MAP DEPARTMENT
226 MIDDLE AVE. ELYRIA, OHIO

SURVEYED BY: ALEX KELSER
CLOSURE: .02:10.000
MAP PAGE(S): 15-B
APPROVED BY: RRM DATE: 9-30-03
SCALE: 1" = 100' PRIOR INSTRUMENT: 20030899990