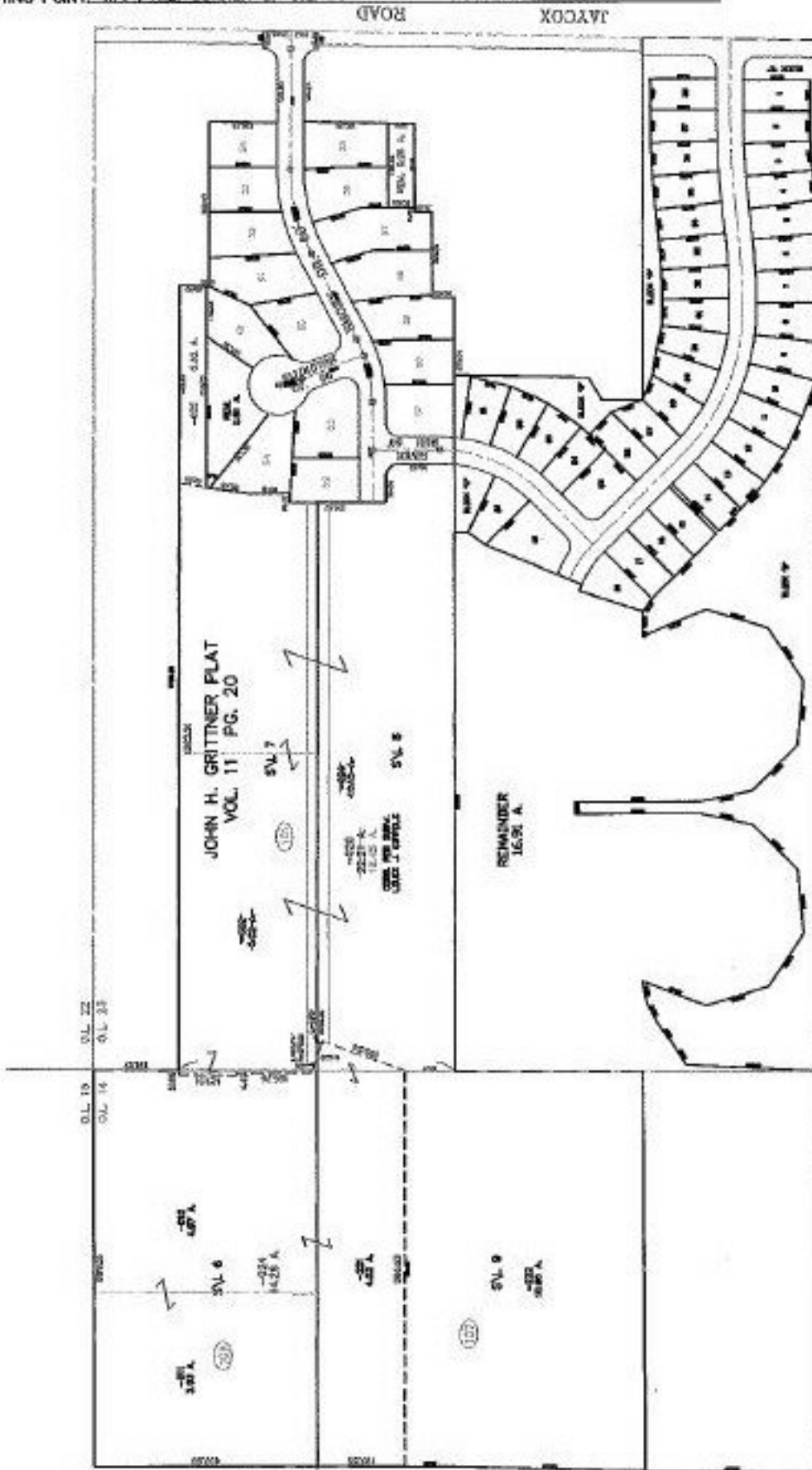
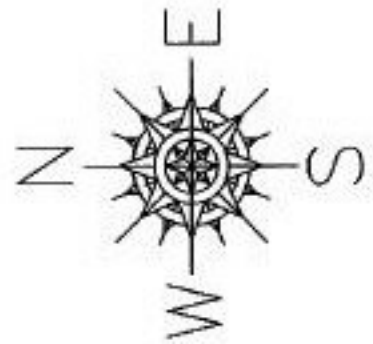


RASTER

PARENT PARCEL: 04-00-014-106-011, -012 & 04-00-014-107-221 & 04-00-023-101-002, -024
CHILD PARCEL: 04-00-014-106-024, 04-00-023-101-025, -026
STARTING POINT: I.P., N.E. CORNER OF O.L. 14

NO. 01431



SPLITS/DEEDS PROCESSED

LORAIN COUNTY TAX MAP DEPARTMENT
226 MIDDLE AVE. ELYRIA, OHIO

SURVEYED BY: LOUIS J. GIFFELS
CLOSURE: 0.01 : 10.000
MAP PAGE(S): 04-00-023-A, 04-00-014-D
APPROVED BY: IJS DATE: 8/27/03
SCALE: 1" = 400' PRIOR INSTRUMENT: 20020867263