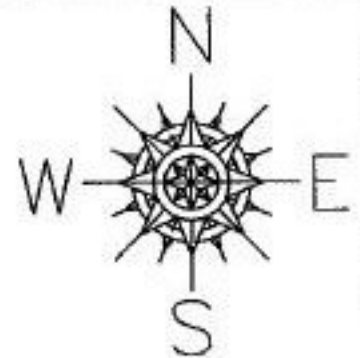


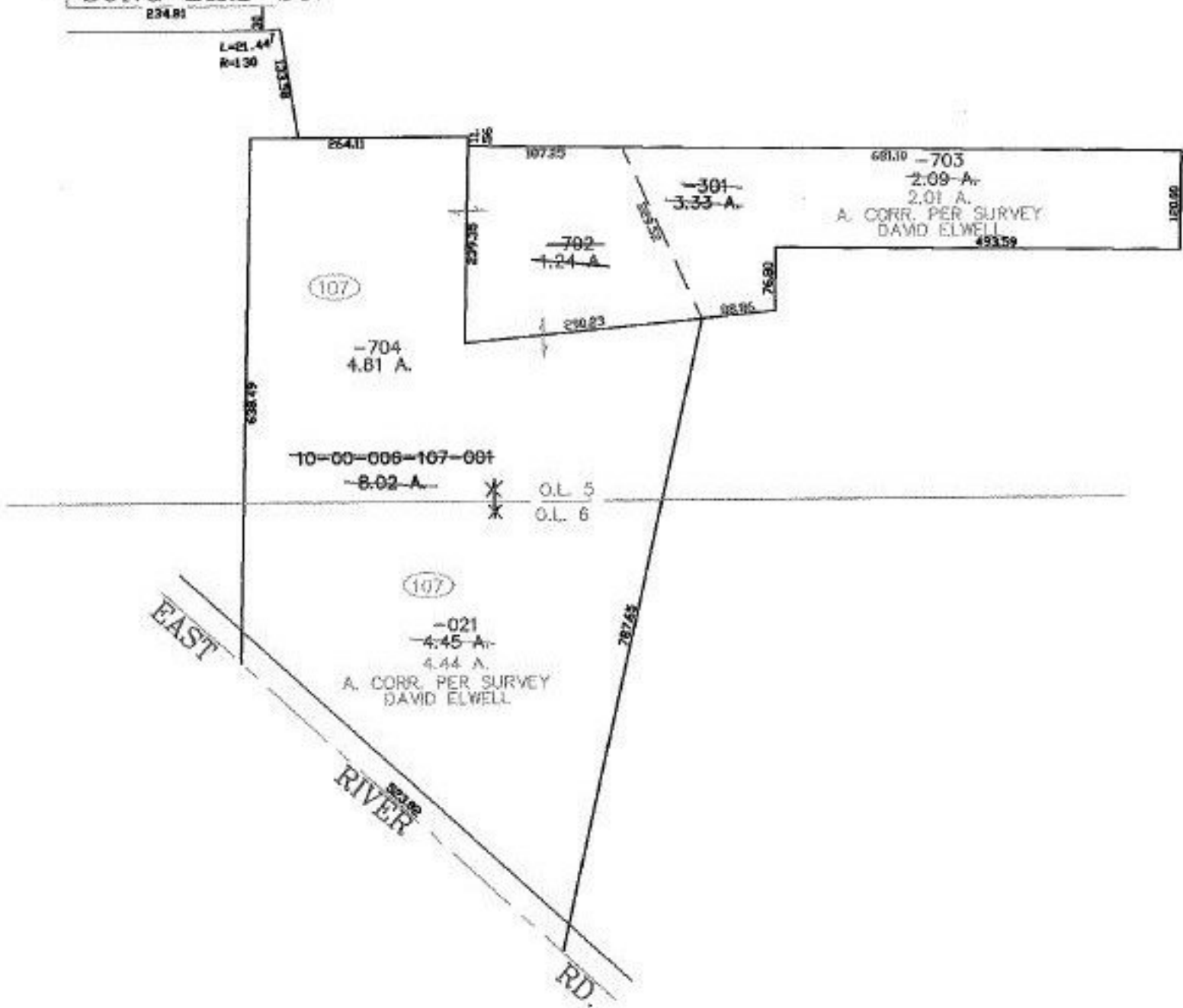
NO. 01412

PARENT PARCEL: 10-00-005-107-301, 10-00-006-107-001  
CHILD PARCEL: 10-00-005-107-702 THRU -704 10-00-006-107-021  
STARTING POINT: INTERSECTION OF RAVEN CT. & SONG BIRD ST.



RAVEN CT.

SONG BIRD ST.



**SPLITS/DEEDS PROCESSED**  
LORAIN COUNTY TAX MAP DEPARTMENT  
226 MIDDLE AVE. ELYRIA, OHIO

SURVEYED BY: DAVID ELWELL  
CLOSURE: 0.00 : 10.000  
MAP PAGE(S): 10-00-005-H  
APPROVED BY: JAH DATE: 7-21-03  
SCALE: 1" = 200' PRIOR INSTRUMENT: 20010780699