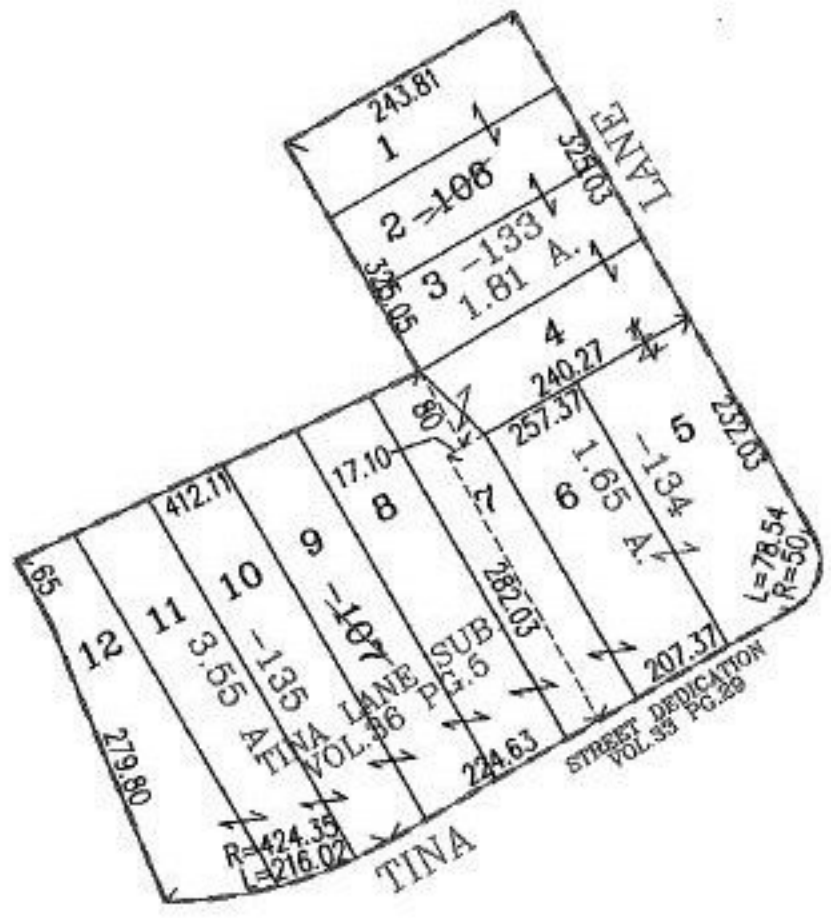


RASTER

PARENT PARCEL: 05-00-097-103-107,-108
CHILD PARCEL: 05-00-097-103-133 THRU -135
STARTING POINT: PART OF TINA LANE SUB. VOL.36 PG.5

NO. 01393



SPLITS/DEEDS PROCESSED
LORAIN COUNTY TAX MAP DEPARTMENT
226 MIDDLE AVE. ELYRIA, OHIO

SURVEYED BY: M.G. HURA
CLOSURE: .01:10.000
MAP PAGE(S): 5-00-097-8
APPROVED BY: RBM DATE: 7-15-03
SCALE: 1" = 200' PRIOR INSTRUMENT: DV 120/292