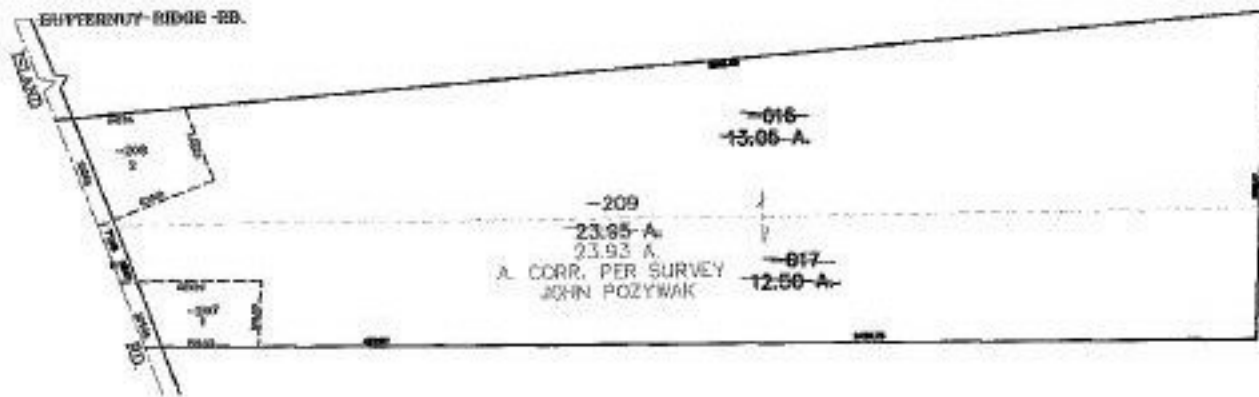


PARENT PARCEL: 07-00-013-000-016, -017  
CHILD PARCEL: 07-00-013-000-207 THRU -209  
STARTING POINT: MONUMENT BOX FROM LORAIN COUNTY ENGINEERS FIELD BOOK 156 PG 34

NO. 01392



**SPLITS/DEEDS PROCESSED**  
LORAIN COUNTY TAX MAP DEPARTMENT  
226 MIDDLE AVE. ELYRIA, OHIO

SURVEYED BY: JOHN POZYWAK  
CLOSURE: 0.00 : 10.000  
MAP PAGE(S): 07-00-013-D  
APPROVED BY: JAH DATE: 6-23-03  
SCALE: 1" = 400 PRIOR INSTRUMENT: 19960427750