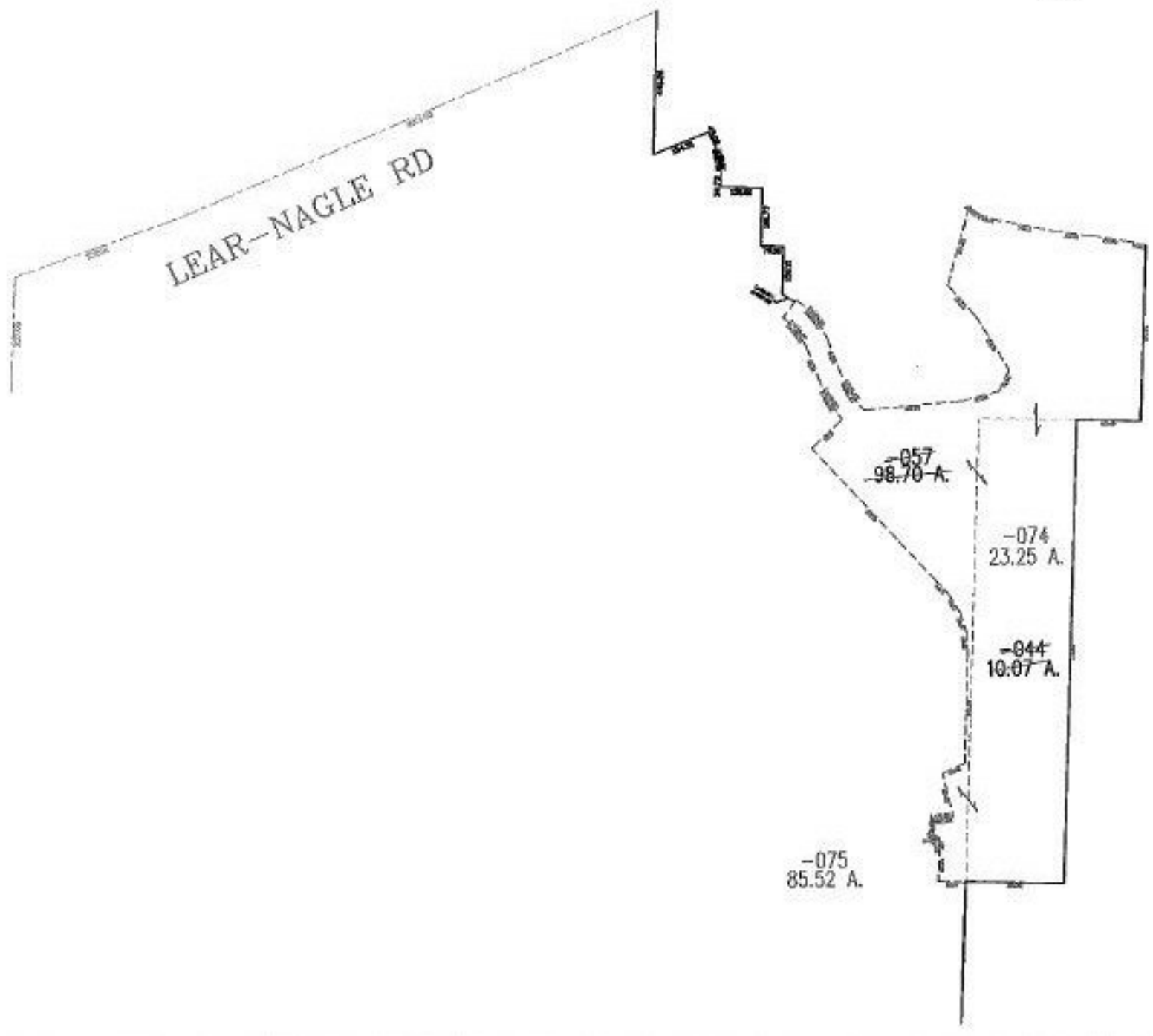


RASTER

PARENT PARCEL: 04-00-027-101-044, -057
CHILD PARCEL: 04-00-027-101-074, -075
STARTING POINT: CL LEAR-NAGLE RD AND COMMON CORNER OF O.L.'s 21,22,27,28

NO. 01378



SPLITS/DEEDS PROCESSED
LORAIN COUNTY TAX MAP DEPARTMENT
226 MIDDLE AVE. ELYRIA, OHIO

SURVEYED BY: DAVID L. ELWELL
CLOSURE: 18:10.000
MAP PAGE(S): 4-H
APPROVED BY: DRH DATE: 5/28/2003
SCALE: 1" = 500 PRIOR INSTRUMENT: OR 1403/830