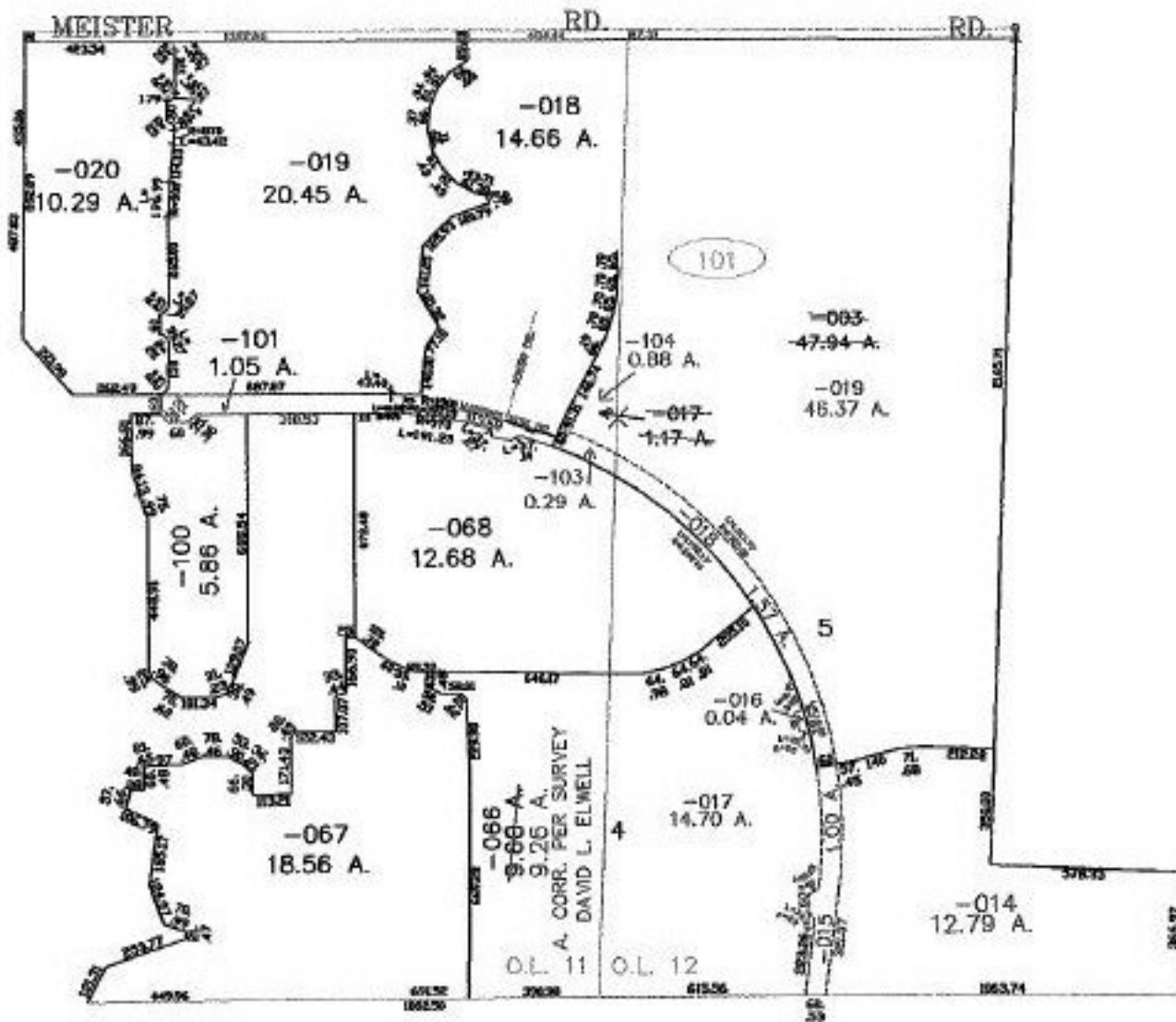


PARENT PARCEL: 02-02-012-101-011, 017 02-02-012-101-003, -011  
CHILD PARCEL: 02-02-012-101-014 THRU -019 02-02-011-000-103, -104  
STARTING POINT: CENTERLINE OF JONES DR. & MARTINS RUN DR.

NO. 01376



**SPLITS/DEEDS PROCESSED**  
LORAIN COUNTY TAX MAP DEPARTMENT  
226 MIDDLE AVE. ELYRIA, OHIO

SURVEYED BY: DAVID L. ELWELL  
CLOSURE: 0.01 : 10.000  
MAP PAGE(S): 2-F, 02-03-001-B, 02-02-011-A  
APPROVED BY: JAH DATE: 5-29-03  
SCALE: 1" = 600' PRIOR INSTRUMENT: 20020857301