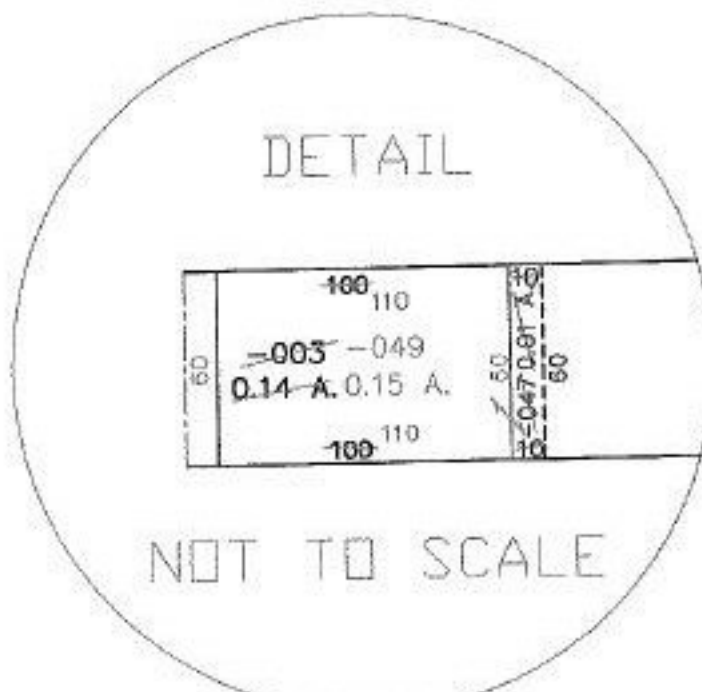
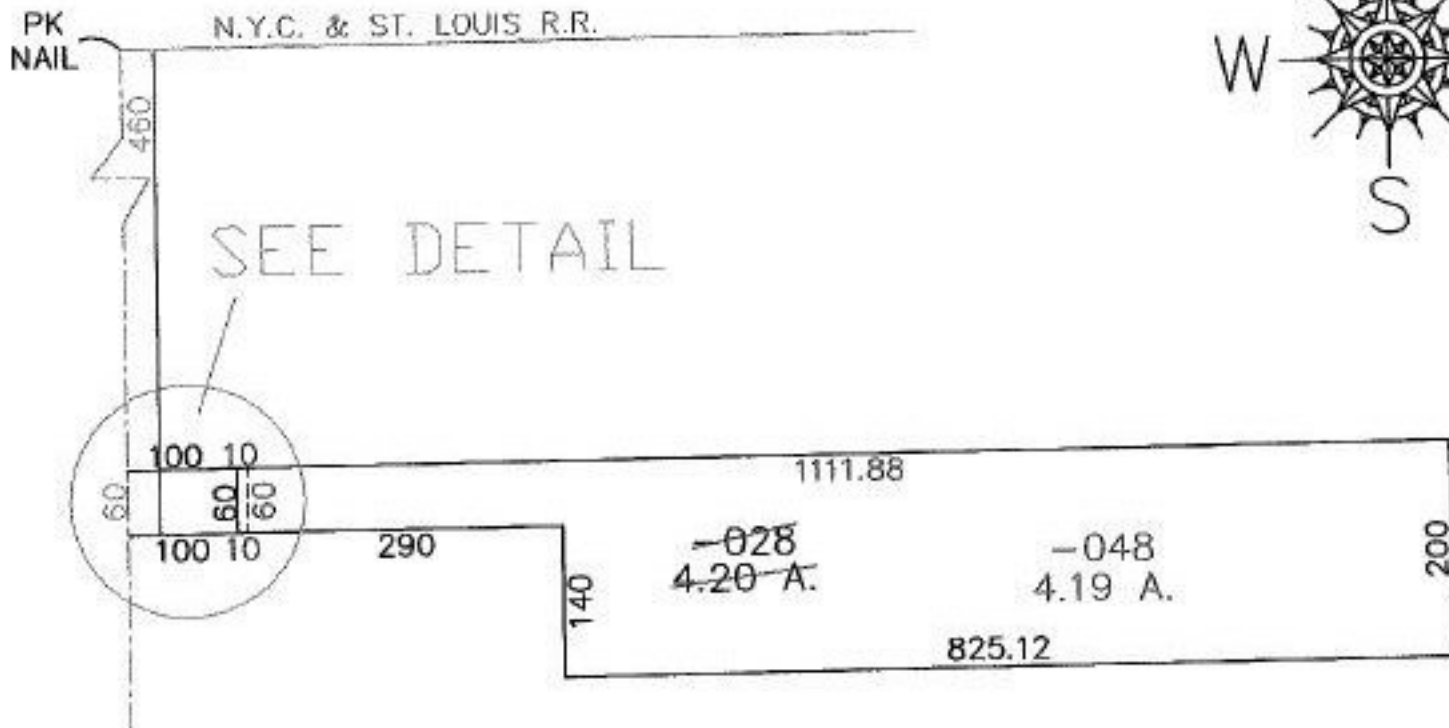


PARENT PARCEL: 04-00-016-102-028, -003  
CHILD PARCEL: 04-00-016-102-047, -048, -049  
STARTING POINT: PK NAIL, CL. OF STATE RT 83 & SOUTH LINE OF N.Y.C. & ST. LOUIS R.R.

NO. 01358



PRIOR INSTRUMENT: DV 237/406  
PRIOR INSTRUMENT: DV 237/409

SURVEYED BY: CHRISTOPHER M. HIRZEL  
CLOSURE: 0:00  
MAP PAGE(S): ~~04~~ 04-00-016-C  
APPROVED BY: DRH DATE: 4/29/03  
SCALE: 1" = 200'



**SPLITS/DEEDS PROCESSED**  
LORAIN COUNTY TAX MAP DEPARTMENT  
226 MIDDLE AVE. ELYRIA, OHIO