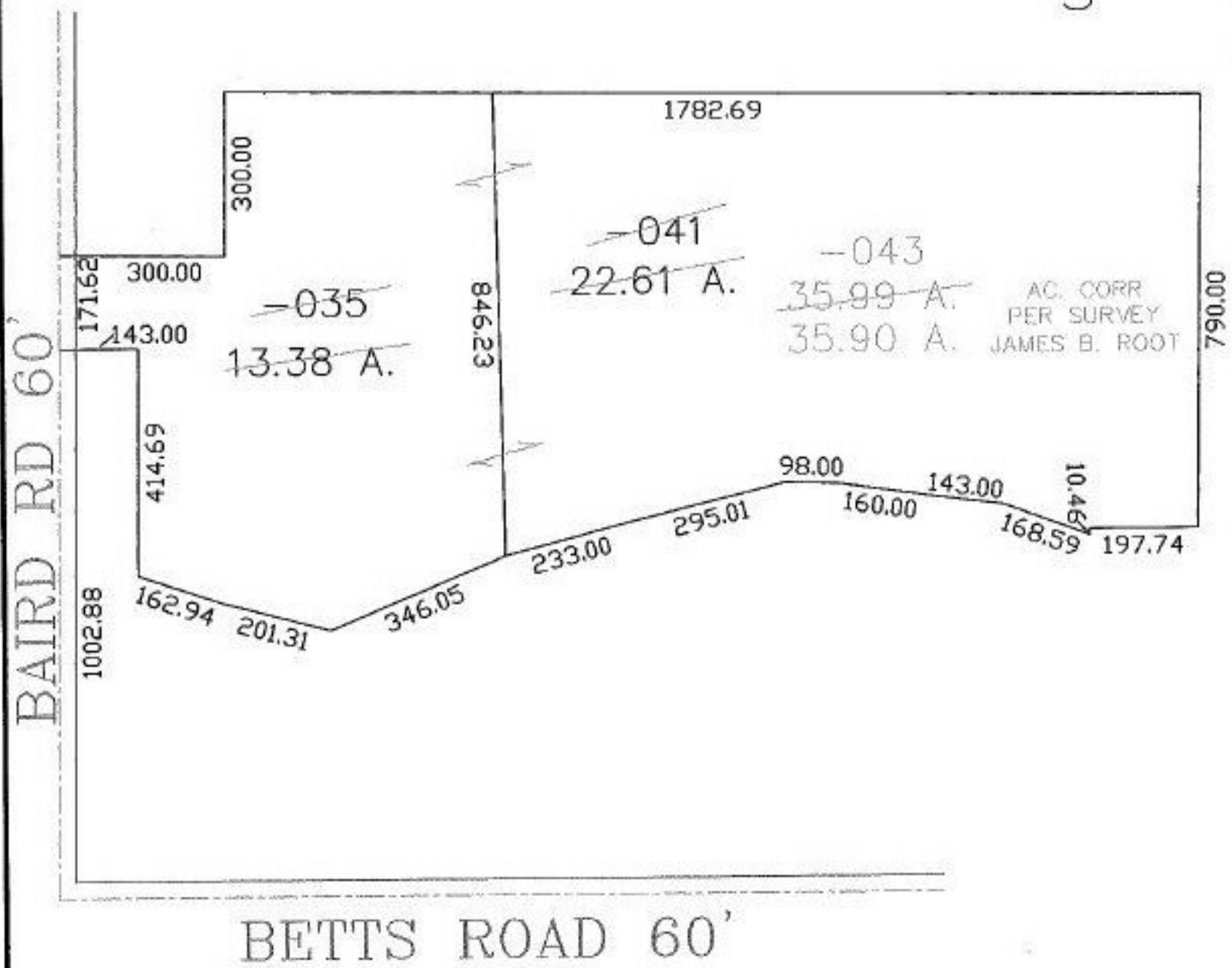
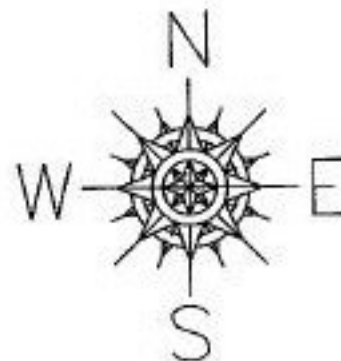


PARENT PARCEL: 13-09-034-000-035, -041

CHILD PARCEL: 13-09-034-000-043

STARTING POINT: INT CL BAIRD ROAD AND CL BETTS RD

NO. 01355



SPLITS/DEEDS PROCESSED

LORAIN COUNTY TAX MAP DEPARTMENT
226 MIDDLE AVE. ELYRIA, OHIO

SURVEYED BY: JAMES B. ROOT

CLOSURE: 1:20,000

MAP PAGE(S): 13-09-034-F

APPROVED BY: DRH DATE: 4/25/2003

SCALE: 1" = 300' PRIOR INSTRUMENT: 20020822426