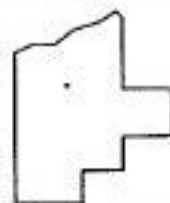
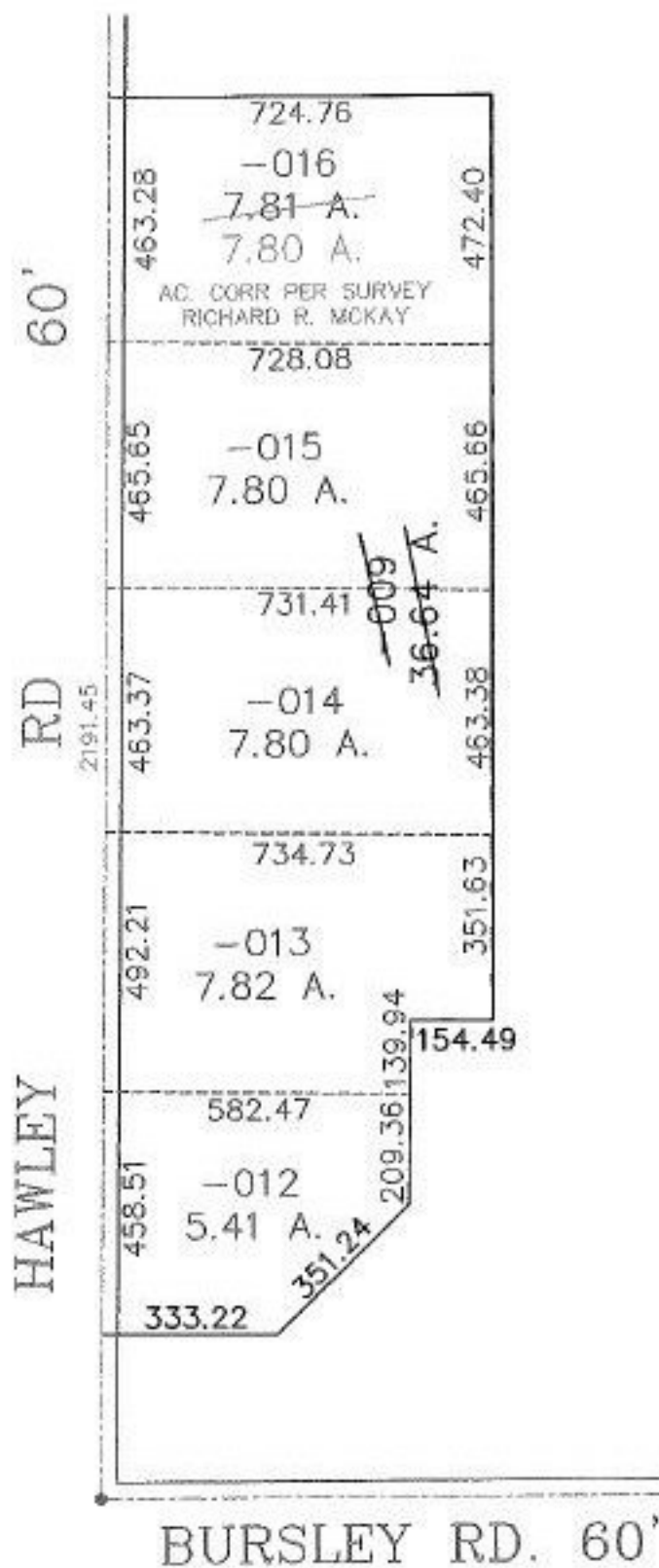


PARENT PARCEL: 21-17-009-000-009

CHILD PARCEL: 21-17-009-000-012, -013, -014, -015, -016

STARTING POINT: INT CL OF BURSLEY RD AND HAWLEY RD

NO. 01345



**SPLITS/DEEDS PROCESSED**  
**LORAIN COUNTY TAX MAP DEPARTMENT**  
 226 MIDDLE AVE. ELYRIA, OHIO

SURVEYED BY: RICHARD ROY MACKAY  
 CLOSURE: 0:00  
 MAP PAGE(S): 21-C  
 APPROVED BY: DRH DATE: 4/30/2003  
 SCALE: 1" = 400' PRIOR INSTRUMENT: 980568966