

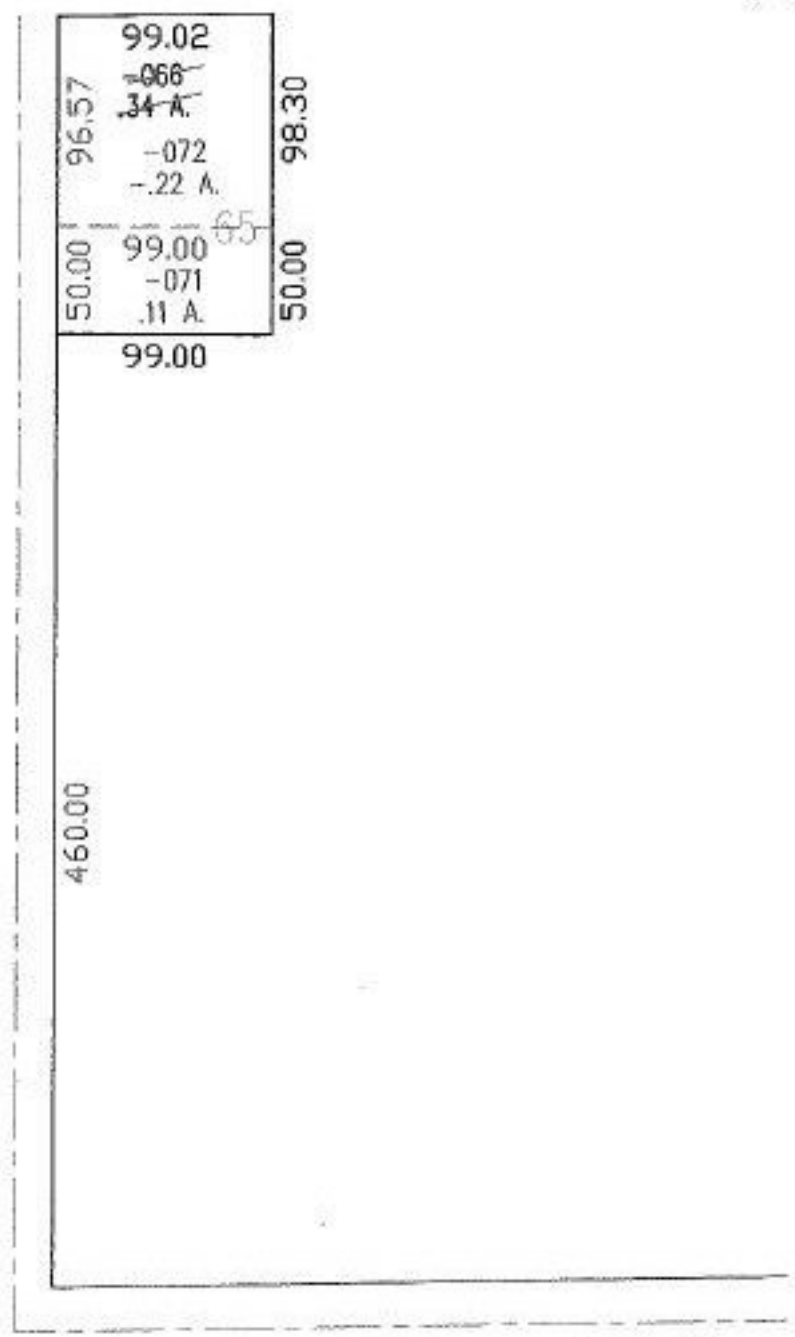
RASTER

PARENT PARCEL: 07-00-007-112-066
CHILD PARCEL: 07-00-007-112-071, -072
STARTING POINT: INT. NORTH LINE MAY STREET AND EAST LINE OF ORCHARD LANE

NO. 01331



ORCHARD LN 35'



MAY ST 40'



SPLITS/DEEDS PROCESSED
LORAIN COUNTY TAX MAP DEPARTMENT
226 MIDDLE AVE. ELYRIA, OHIO

SURVEYED BY: DONALD E. HIMES
CLOSURE: 0:00
MAP PAGE(S): 07-00-007-B
APPROVED BY: DRH DATE: 3/18/2003
SCALE: 1" = 100' PRIOR INSTRUMENT: P.V. 64 P.35