

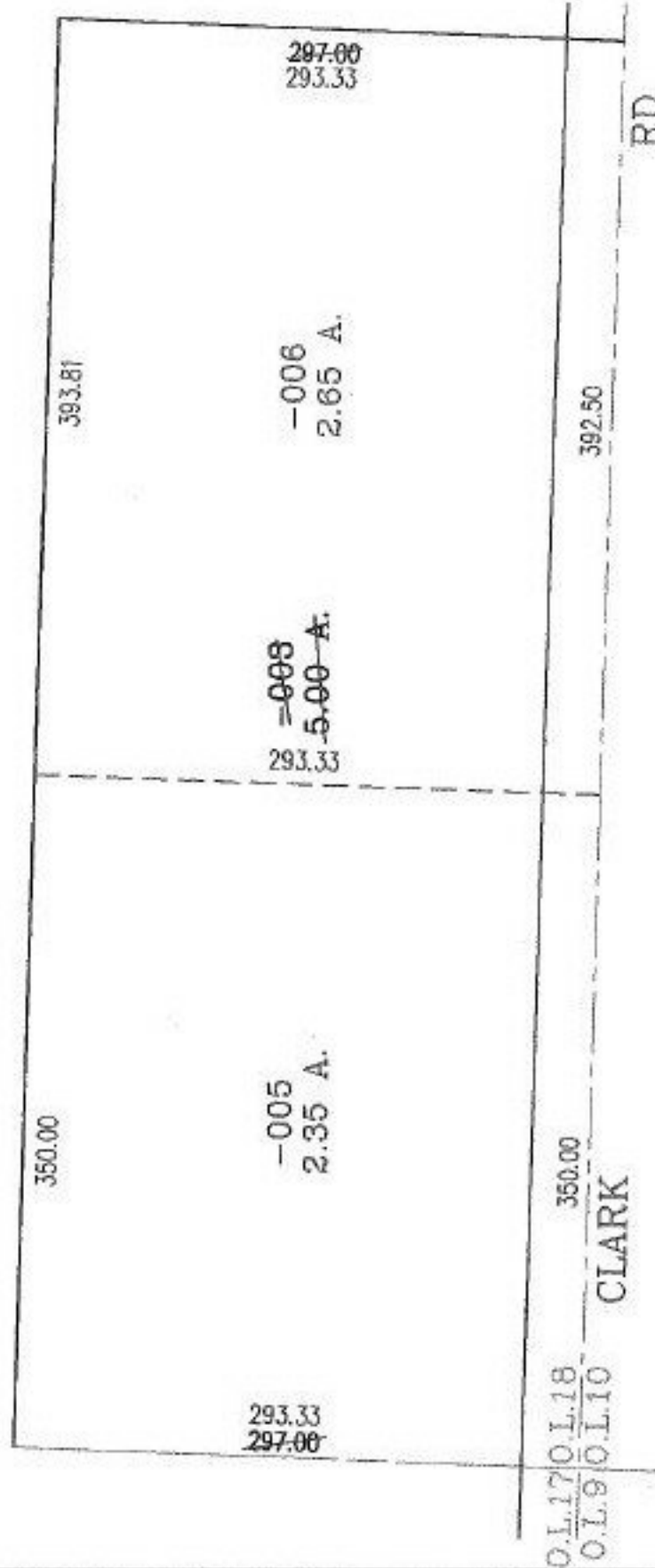
RASTER

PARENT PARCEL: 21-05-018-000-003

CHILD PARCEL: 21-05-018-000-005, -006

STARTING POINT: SOUTHEASTERLY CORNER OF O.L. 18

NO. 01297



SPLITS/DEEDS PROCESSED

LORAIN COUNTY TAX MAP DEPARTMENT
226 MIDDLE AVE. ELYRIA, OHIO

SURVEYED BY: NEIL M. JHNKE

CLOSURE: .00:10.000

MAP PAGE(S): 21-A

APPROVED BY: RRM DATE: 1-31-03

SCALE: 1" = 100' PRIOR INSTRUMENT: DV 1285/534