

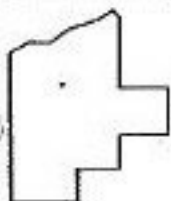
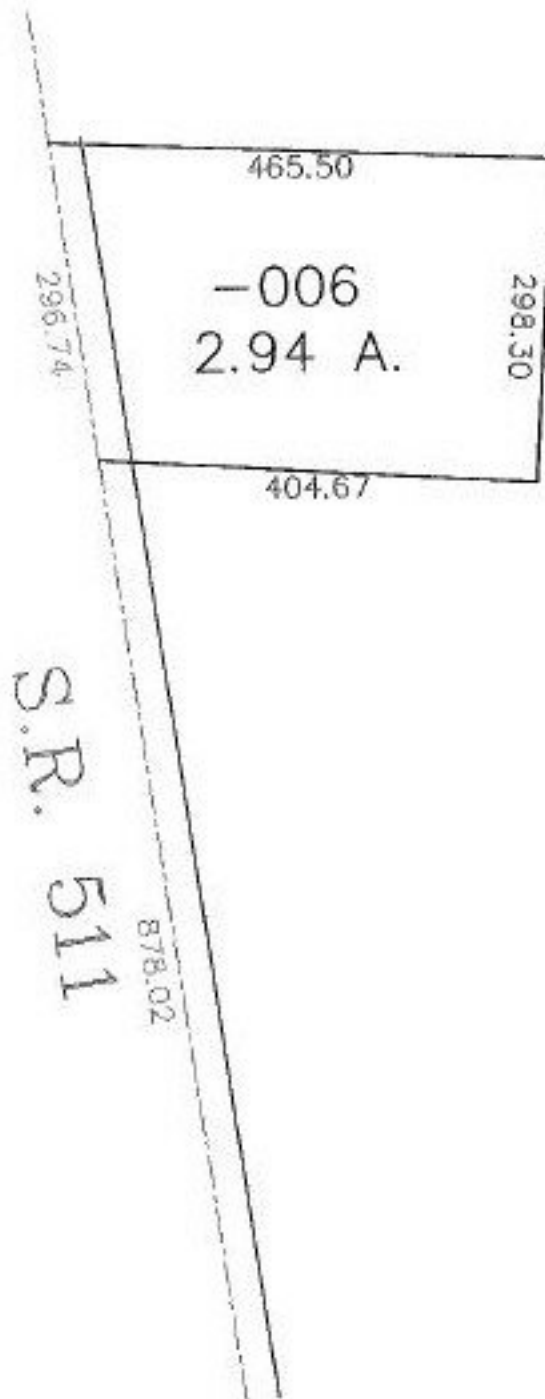
MASTER

PARENT PARCEL: 17-06-017-000-006

CHILD PARCEL: --SAME--

STARTING POINT: RR SPIKE INT CL SR 511 AND O.L. 017

NO. 00944-A



SPLITS/DEEDS PROCESSED

LORAIN COUNTY TAX MAP DEPARTMENT
226 MIDDLE AVE. ELYRIA, OHIO

SURVEYED BY: THOMAS M. SNEZEK

CLOSURE: 1:10,000

MAP PAGE(S): 17-G

APPROVED BY: DRH DATE: 11/11/2003

SCALE: 1" = 200' PRIOR INSTRUMENT: 20010767024