

RASTER

PARENT PARCEL: 11-00-092-000-035

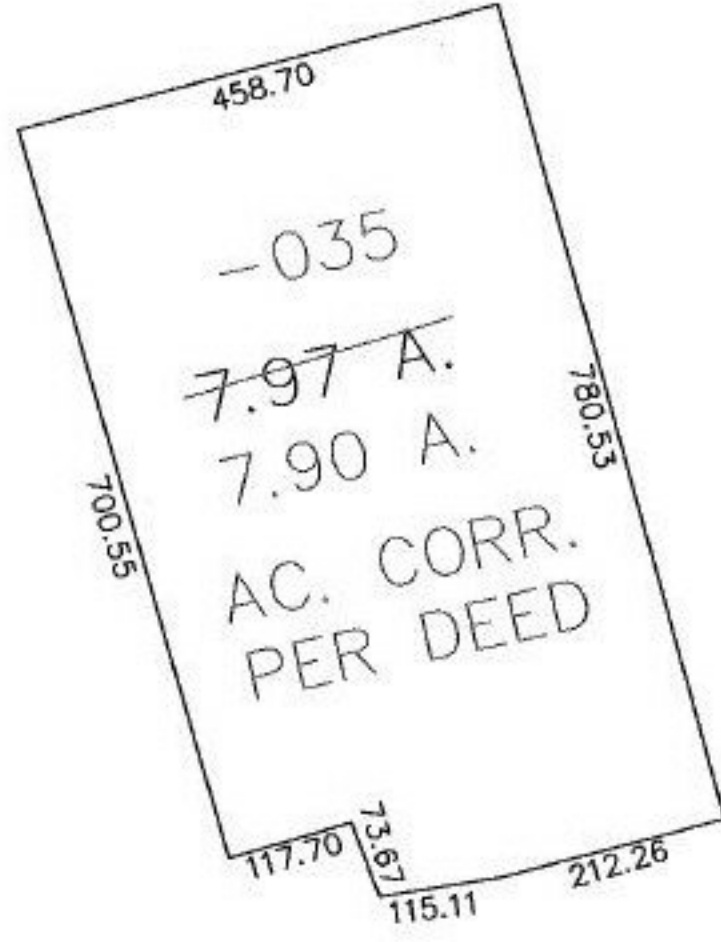
CHILD PARCEL: --SAME--

STARTING POINT:

NO. 00941-A



UPDATE LEGAL
BEFORE NEXT TRANSFER
DOESN'T CLOSE



SPLITS/DEEDS PROCESSED
LORAIN COUNTY TAX MAP DEPARTMENT
226 MIDDLE AVE. ELYRIA, OHIO

SURVEYED BY: T.W. LAUNDON
CLOSURE: 1:7000
MAP PAGE(S): 11-00-092-A
APPROVED BY: DRH DATE: 11/4/2003
SCALE: 1" = 200' PRIOR INSTRUMENT: DV 794/315