

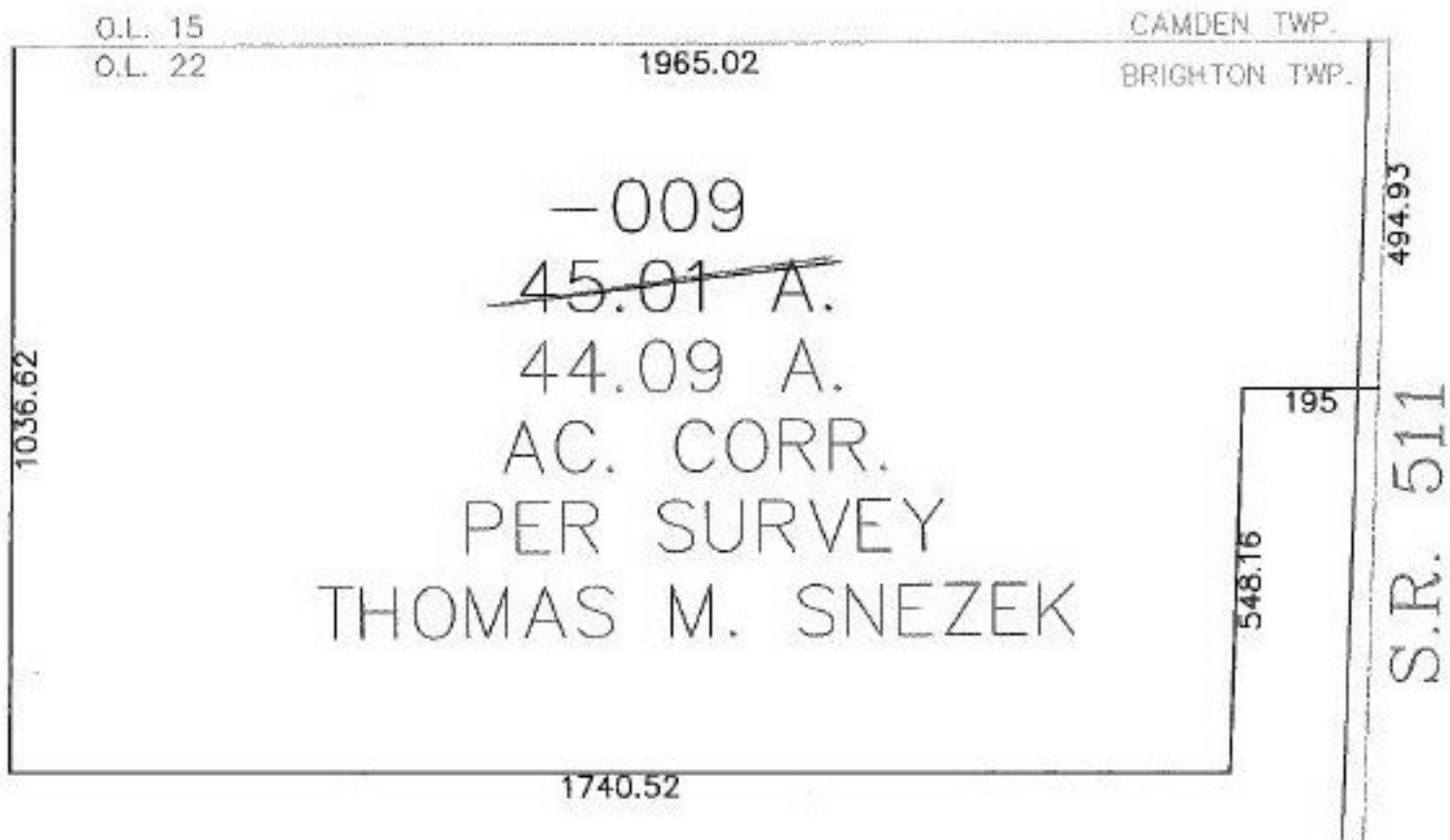
RASTER

PARENT PARCEL: 17-08-022-000-009

CHILD PARCEL: --SAME--

STARTING POINT: INT S.R. 511 & NOTHERLY LINE OF O.L. 22

NO. 00935-A



**SPLITS/DEEDS PROCESSED**  
 LORAIN COUNTY TAX MAP DEPARTMENT  
 226 MIDDLE AVE. ELYRIA, OHIO

SURVEYED BY: THOMAS M. SNEZEK  
 CLOSURE: 1:10,000  
 MAP PAGE(S): 17-08-022  
 APPROVED BY: DRH DATE: 9/29/2003  
 SCALE: 1" = 300' PRIOR INSTRUMENT: DV 820/367