

RASTER

PARENT PARCEL: 09-00-086-109-031

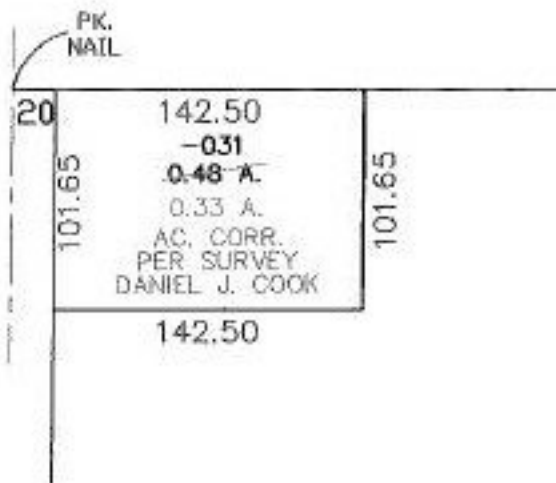
CHILD PARCEL: ---SAME---

STARTING POINT: NW CORNER OF BLOCK 24

NO. 0919-A



N. PARK ST.



**SPLITS/DEEDS PROCESSED**

LORAIN COUNTY TAX MAP DEPARTMENT  
226 MIDDLE AVE. ELYRIA, OHIO

SURVEYED BY: DANIEL J. COOK  
 CLOSURE: 0:00  
 MAP PAGE(S): 09-00-086-B  
 APPROVED BY: DRH DATE: 10/1/2003  
 SCALE: 1" = 100' PRIOR INSTRUMENT: 2003944836