

RASER

PARENT PARCEL: 01-00-044-000-008, 01-00-043-000-001

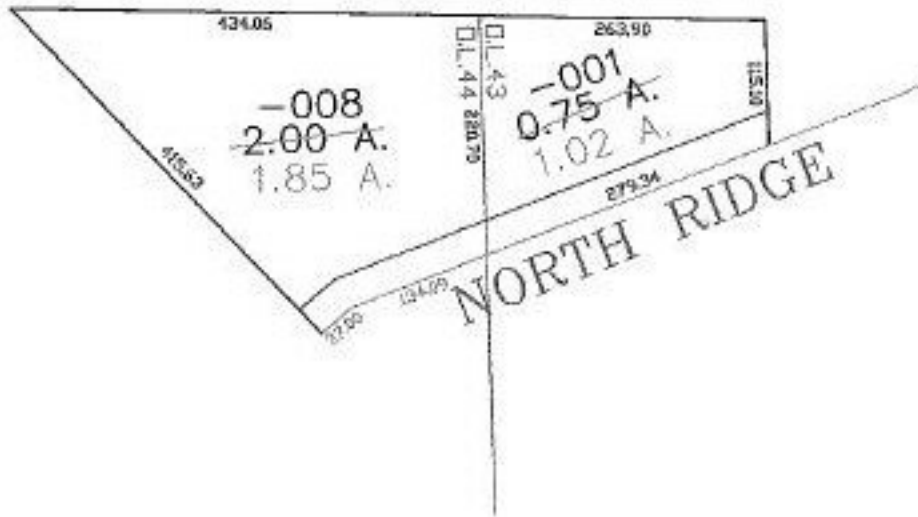
NO. 00908-D

CHILD PARCEL: --SAME--

STARTING POINT: NE CORNER OF O.L. 43



AC. CORR
PER SURVEY
P.A. ROSEBECK



SPLITS/DEEDS PROCESSED

LORAIN COUNTY TAX MAP DEPARTMENT
226 MIDDLE AVE. ELYRIA, OHIO

SURVEYED BY: PHIL ROSEBECK
CLOSURE: 1:10,000
MAP PAGE(S): 01-00-044-B
APPROVED BY: DRH DATE: 9/10/2003
SCALE: 1" = 200' PRIOR INSTRUMENT: 8826691914