

RASTER

PARENT PARCEL: 06-25-023-105-038, -039, -040

CHILD PARCEL: --SAME--

STARTING POINT: INT W ROW WHITE OAK DR AND N ROW POPLAR

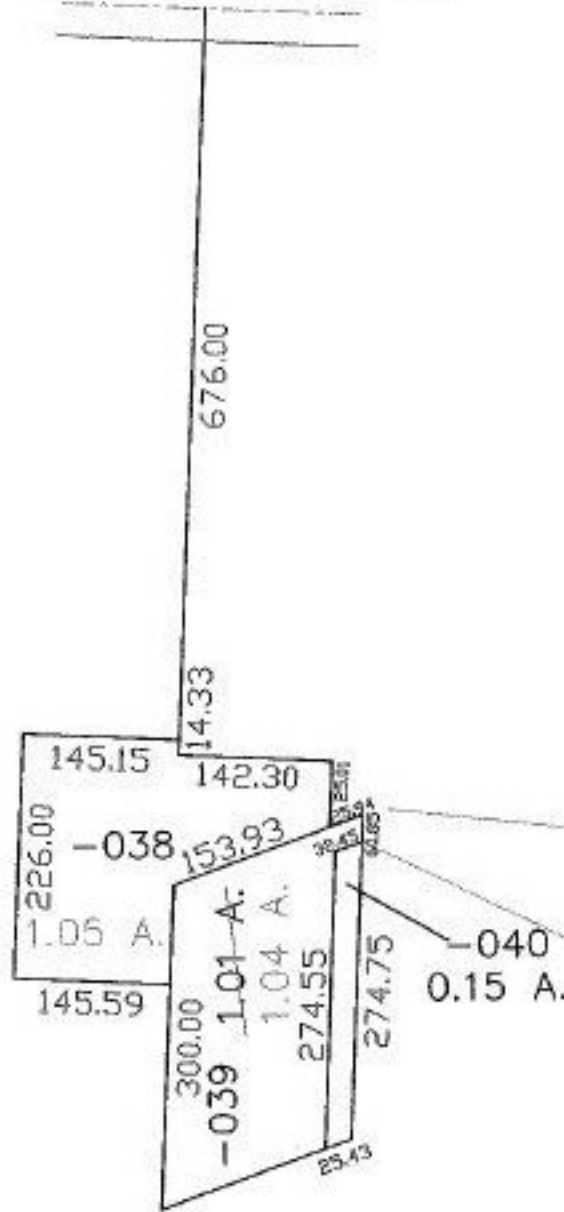
NO. 00894-D

# MAP UPDATE

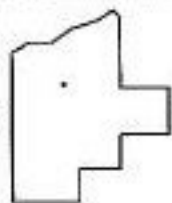


## WHITE OAK DR

AC. CORR.  
PER SURVEY  
C. HIRZEL



DETAIL  
NOT TO  
SCALE



**SPLITS/DEEDS PROCESSED**  
LORAIN COUNTY TAX MAP DEPARTMENT  
226 MIDDLE AVE. ELYRIA, OHIO

SURVEYED BY: CHRISTOPHER M. HIRZEL  
CLOSURE: 0:00  
MAP PAGE(S): 6-89  
APPROVED BY: DRH DATE: 8/7/2003  
SCALE: 1" = 200' PRIOR INSTRUMENT: