

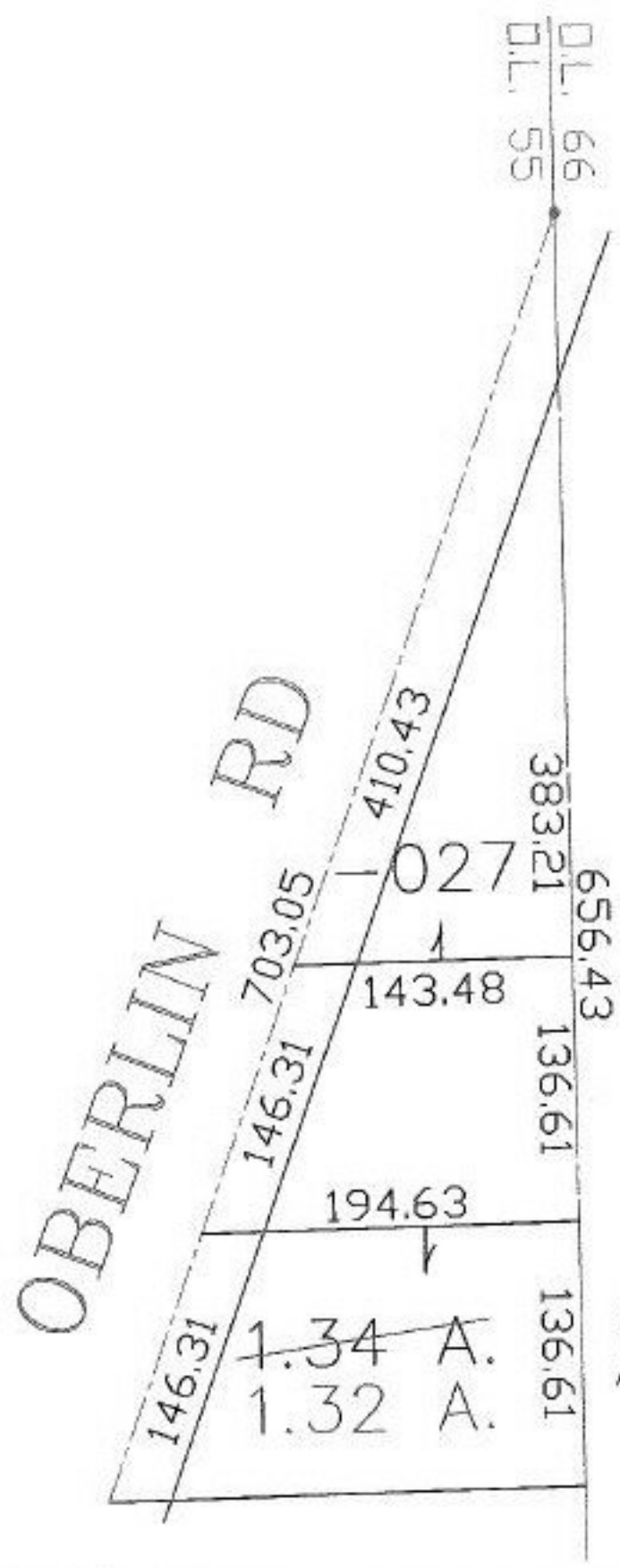
RASTER

PARENT PARCEL: 05-00-055-000-027

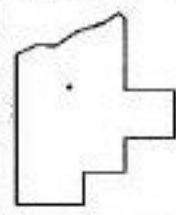
CHILD PARCEL: --SAME--

STARTING POINT: PIN AT INT OF OBERLIN RD AND EAST LINE OF O.L. 55

NO. 00863-A



AC. CORR.
PER SURVEY
ALEX KELSER



SPLITS/DEEDS PROCESSED

LORAIN COUNTY TAX MAP DEPARTMENT
226 MIDDLE AVE. ELYRIA, OHIO

SURVEYED BY: ALEX KELSER
 CLOSURE: 0.00
 MAP PAGE(S): 05-G
 APPROVED BY: DRH DATE: 5/22/2003
 SCALE: 1" = 100' PRIOR INSTRUMENT: 20000675875