

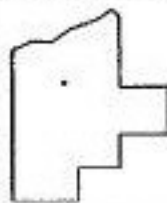
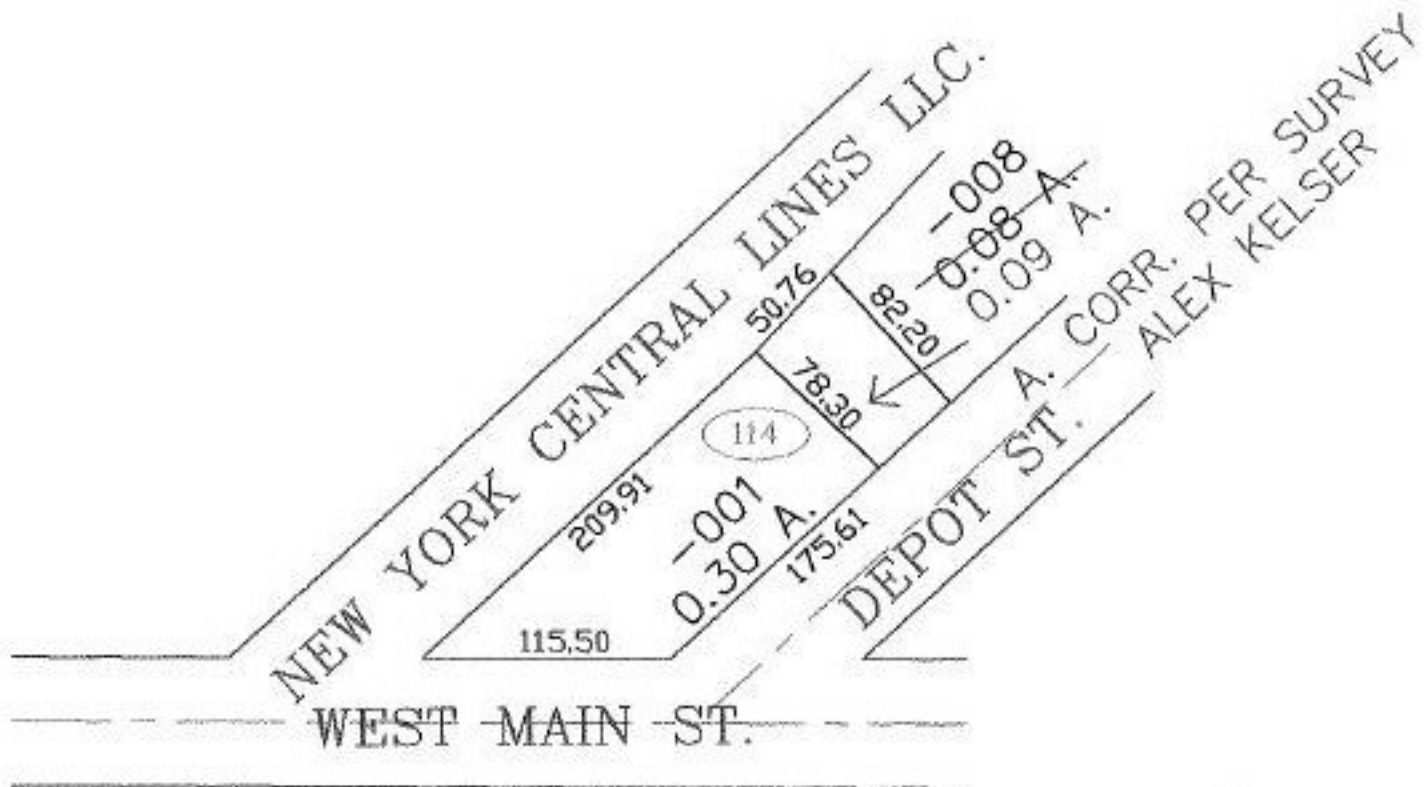
RASTER

PARENT PARCEL: 18-00-028-114-001, -008

CHILD PARCEL: 18-00-028-114-001, -008

STARTING POINT: SIDELINE OF WEST MAIN ST. & DEPOT ST.

NO. 00862-X



SPLITS/DEEDS PROCESSED

LORAIN COUNTY TAX MAP DEPARTMENT
226 MIDDLE AVE. ELYRIA, OHIO

SURVEYED BY:	ALEX KELSER
CLOSURE:	0.00 : 10.000
MAP PAGE(S):	18-00-028-D
APPROVED BY:	JAH
DATE:	6-17-03
SCALE:	1" = 100
PRIOR INSTRUMENT:	200000668880