

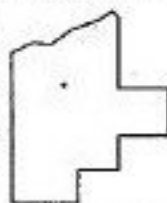
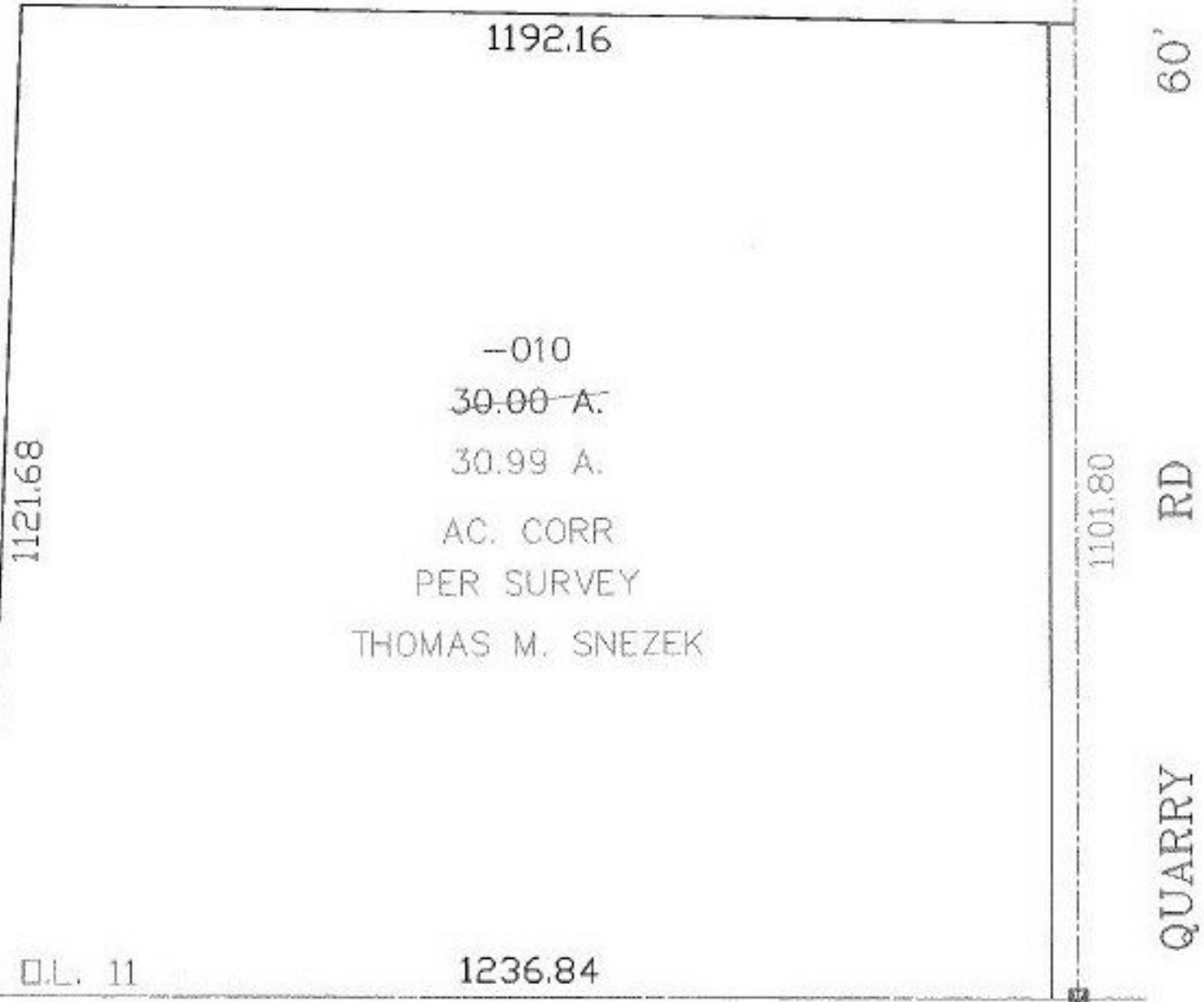
RASTER

PARENT PARCEL: 17-07-011-000-010

CHILD PARCEL: --SAME--

STARTING POINT: INT QUARRY RD AND SOUTHLINE OF O.L. 11

NO. 00856-X



SPLITS/DEEDS PROCESSED
LORAIN COUNTY TAX MAP DEPARTMENT
 226 MIDDLE AVE. ELYRIA, OHIO

SURVEYED BY: THOMAS M SNEZEK
 CLOSURE: 0:00
 MAP PAGE(S): 17-07-011-B
 APPROVED BY: DRH DATE: 5/14/2003
 SCALE: 1" = 200' PRIOR INSTRUMENT: 20020852284