

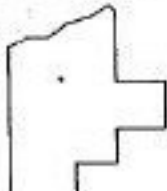
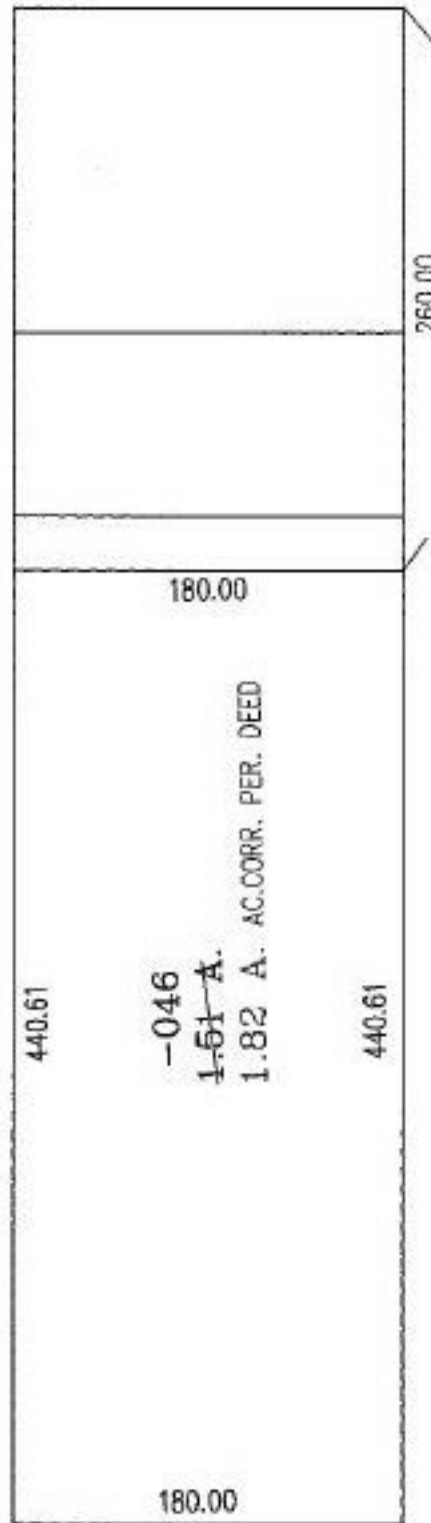
RASTER

PARENT PARCEL: 07-00-046-108-046

CHILD PARCEL:

STARTING POINT: NORTHEAST CORNER OF 07-00-046-108-018

NO. 00805-A



SPLITS/DEEDS PROCESSED
LORAIN COUNTY TAX MAP DEPARTMENT
 226 MIDDLE AVE. ELYRIA, OHIO

SURVEYED BY: DEED
 CLOSURE: .00:10.000
 MAP PAGE(S): 7-00-046-D
 APPROVED BY: RRM DATE: 2-24-03
 SCALE: 1" = 100' PRIOR INSTRUMENT: DV 997/522