

RASTER

PARENT PARCEL: 04-00-010-113-090

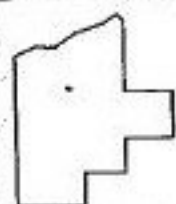
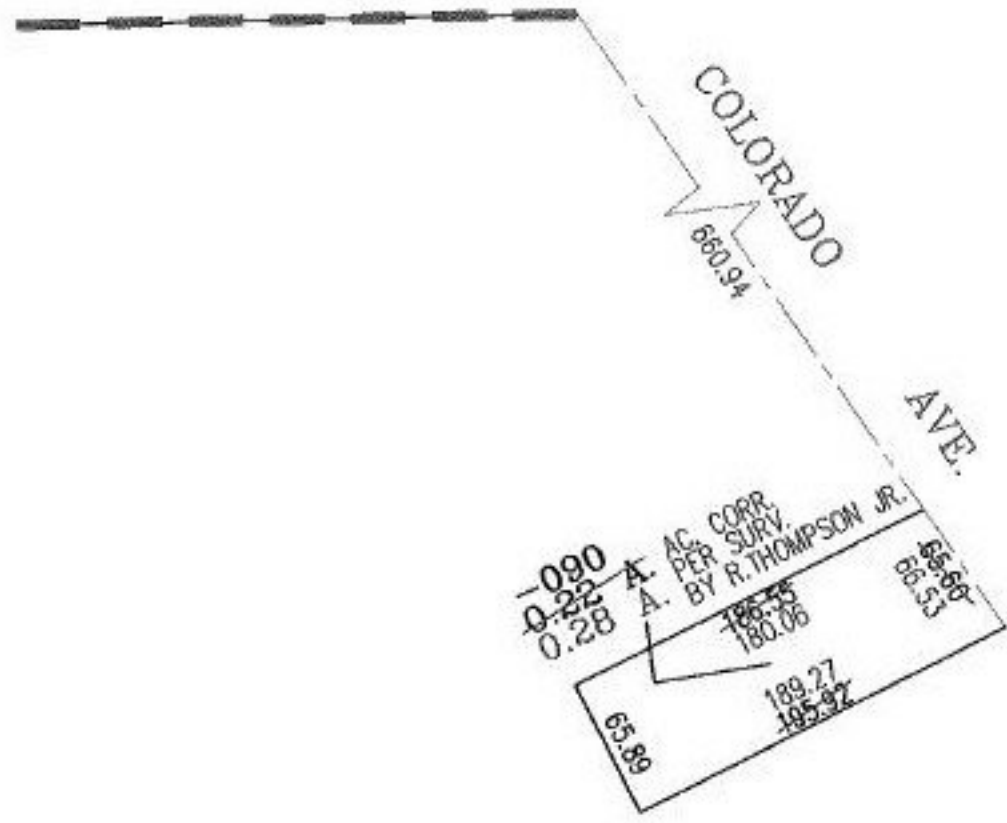
NO. 00792-A

CHILD PARCEL:

STARTING POINT: INTERSECTION OF C/L OF COLORADO AVE. AND SOUTH LINE OF
STONEBRIDGE CREEK SUB.(VOL.61 PG.68)



STONEBRIDGE CREEK SUB.
VOL.61 PG.68



SPLITS/DEEDS PROCESSED
LORAIN COUNTY TAX MAP DEPARTMENT
226 MIDDLE AVE. ELYRIA, OHIO

SURVEYED BY: RICHARD A. THOMPSON JR.
CLOSURE: N/A
MAP PAGE(S): 4-00-010-F
APPROVED BY: RRM DATE: 2-14-03
SCALE: 1" = 100' PRIOR INSTRUMENT: 20020827825