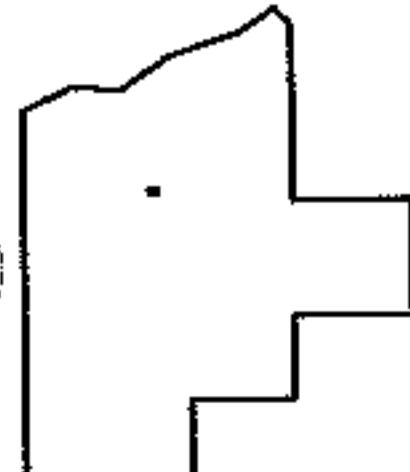
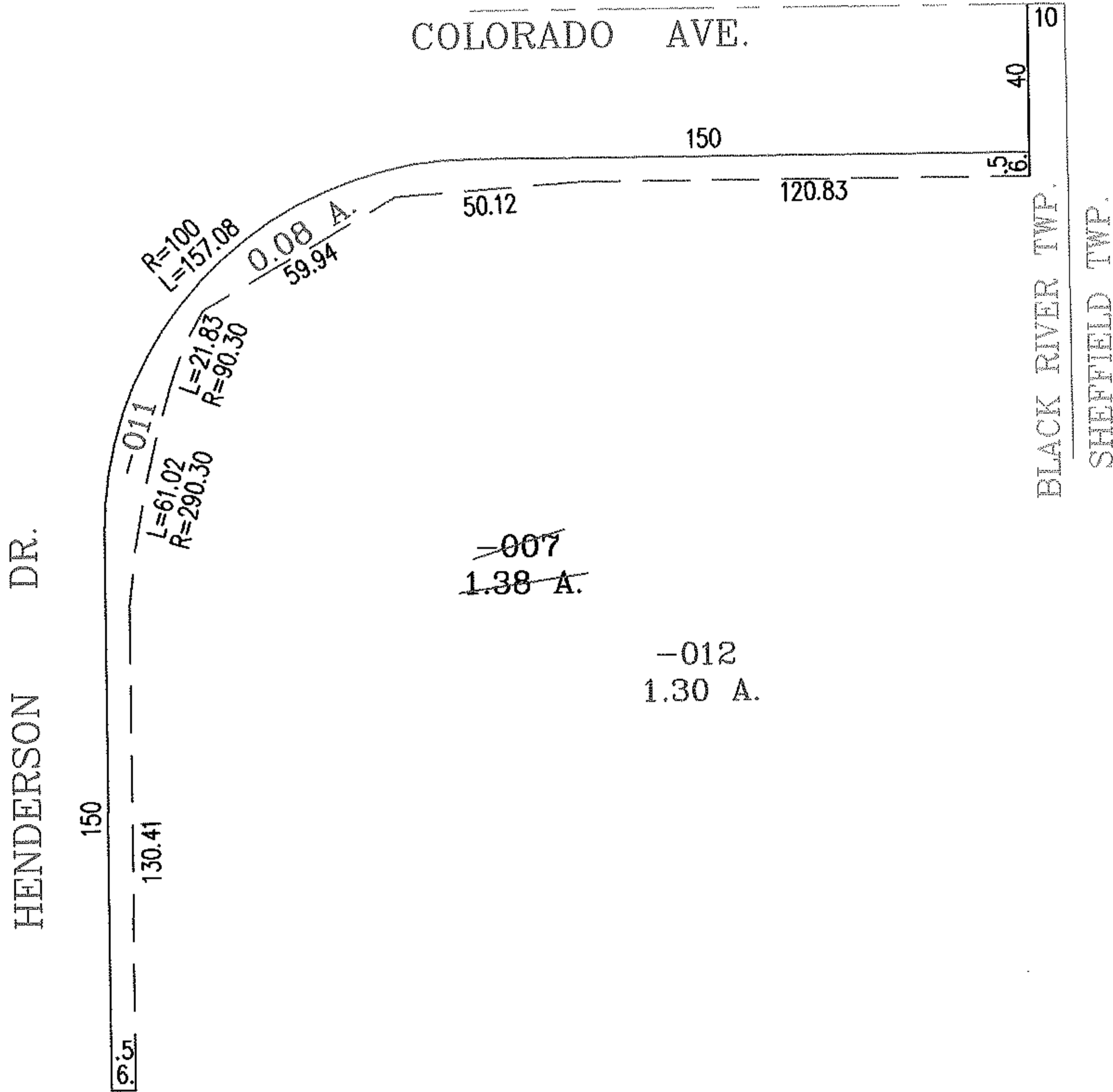
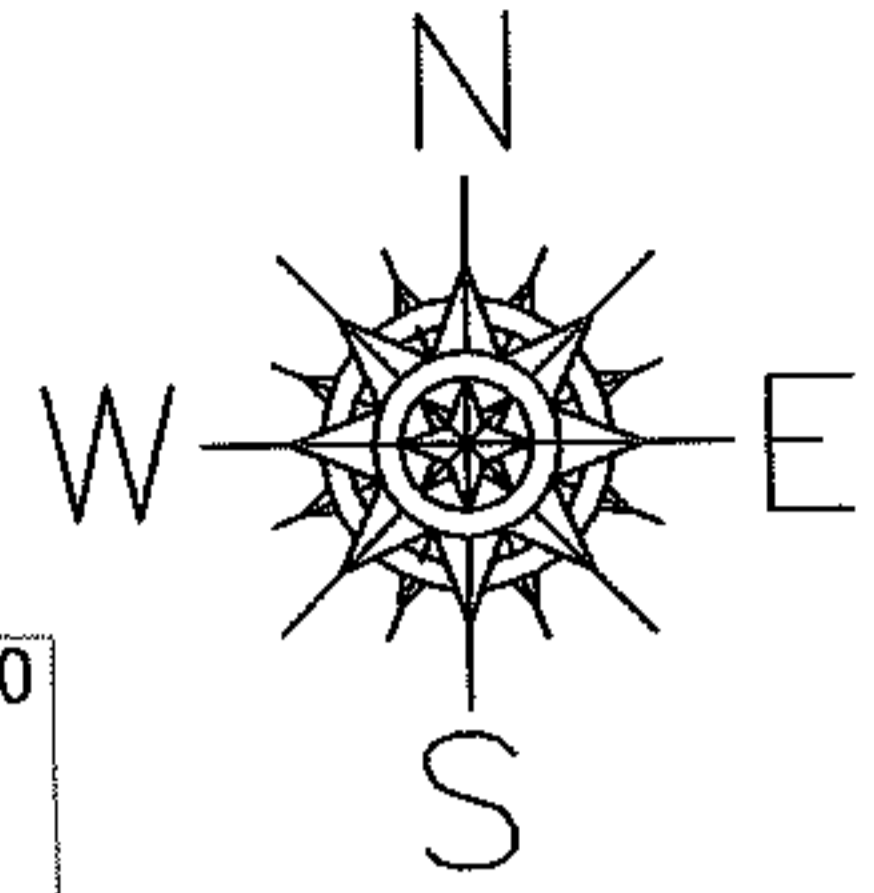


PARENT PARCEL: 02-00-051-144-007

CHILD PARCEL: 02-00-051-144-011,-012

NO. 00077

STARTING POINT: INTERSECTION OF C/L OF COLORADO AVE. AND EAST LINE OF BLACK RIVER TWP.



**SPLITS/DEEDS PROCESSED**

LORAIN COUNTY TAX MAP DEPARTMENT  
226 MIDDLE AVE. ELYRIA, OHIO

SURVEYED BY: BRIAN P. McCARTNEY  
 CLOSURE: .00:10.000  
 MAP PAGE(S): 02-00-051-B  
 APPROVED BY: RRM DATE: 12-5-03  
 SCALE: 1" = 50' PRIOR INSTRUMENT: 2003900920