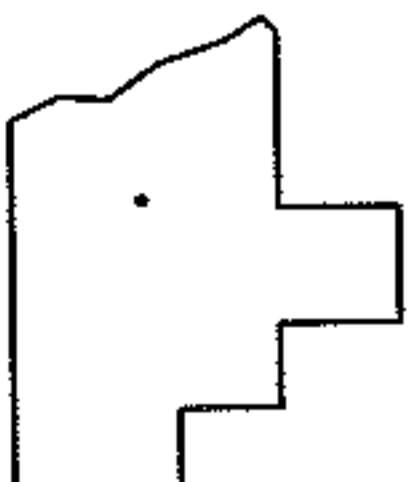
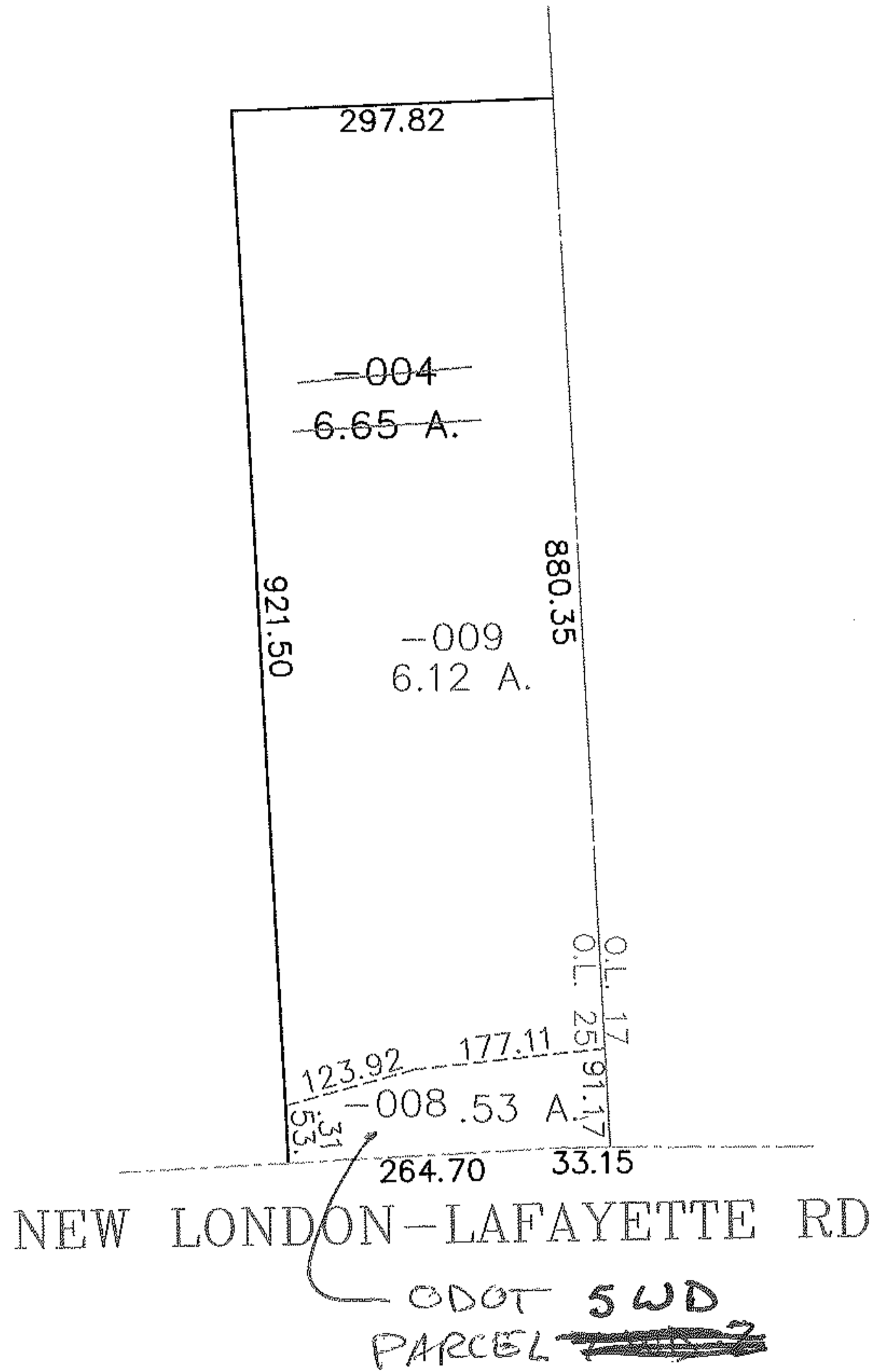
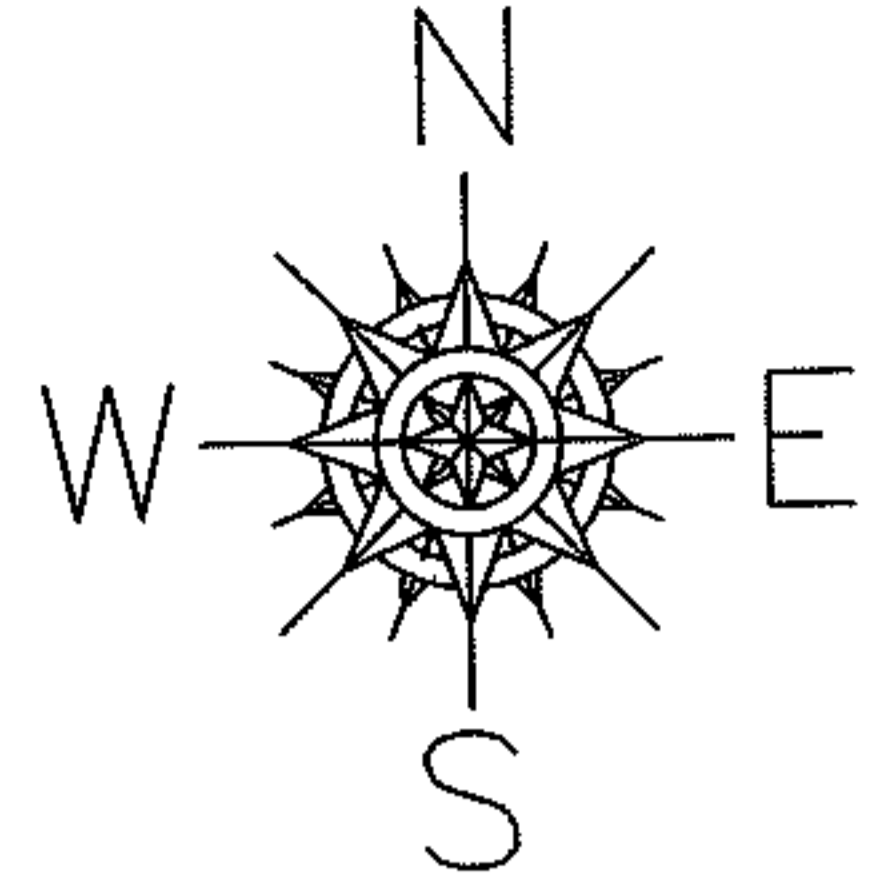


PARENT PARCEL: 21-05-025-000-004

CHILD PARCEL: 21-05-025-000-008, -009

STARTING POINT: SW CORNER OF LOT 17

NO. 00065



SPLITS/DEEDS PROCESSED
LORAIN COUNTY TAX MAP DEPARTMENT
 226 MIDDLE AVE. ELYRIA, OHIO

SURVEYED BY: N/A
 CLOSURE: N/A
 MAP PAGE(S): 21-A
 APPROVED BY: DRH DATE: 3/10/2003
 SCALE: 1" = 200 PRIOR INSTRUMENT: