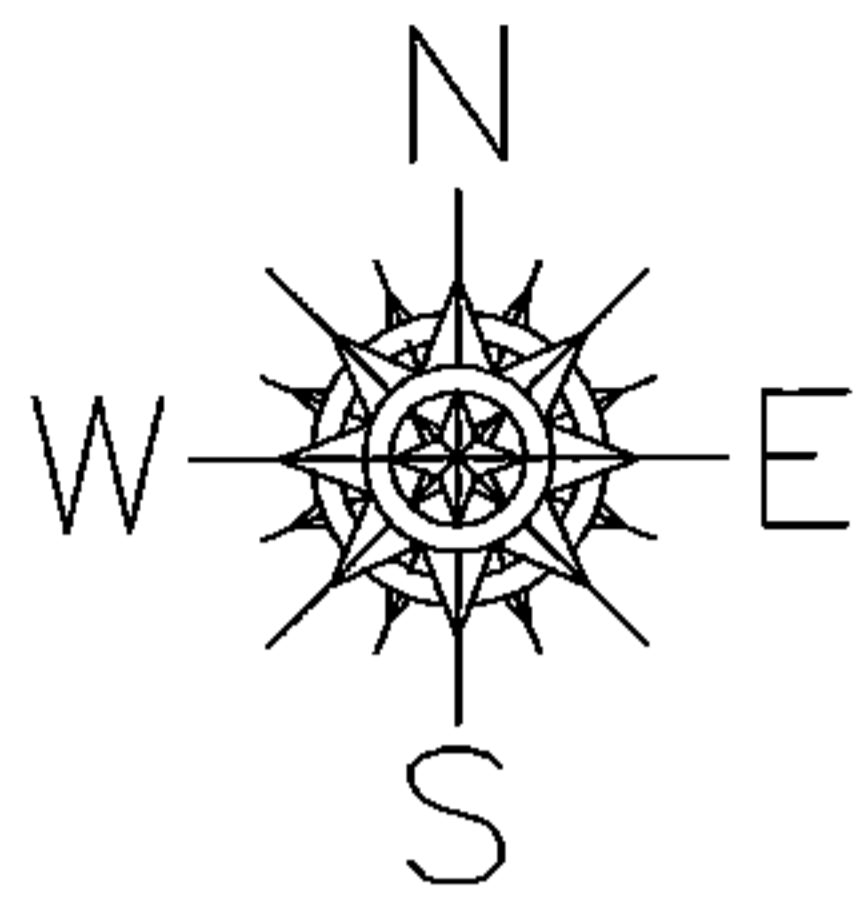


PARENT PARCEL: ADD TO DUPLICATE
 CHILD PARCEL: 07-00-009-119-014 & 07-00-016-108-031
 STARTING POINT: PLAT VOL. 15 PG. 75

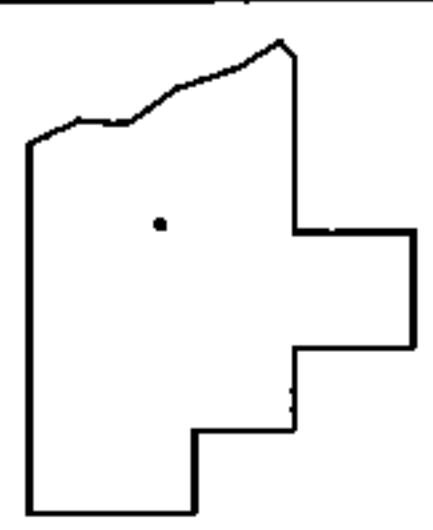
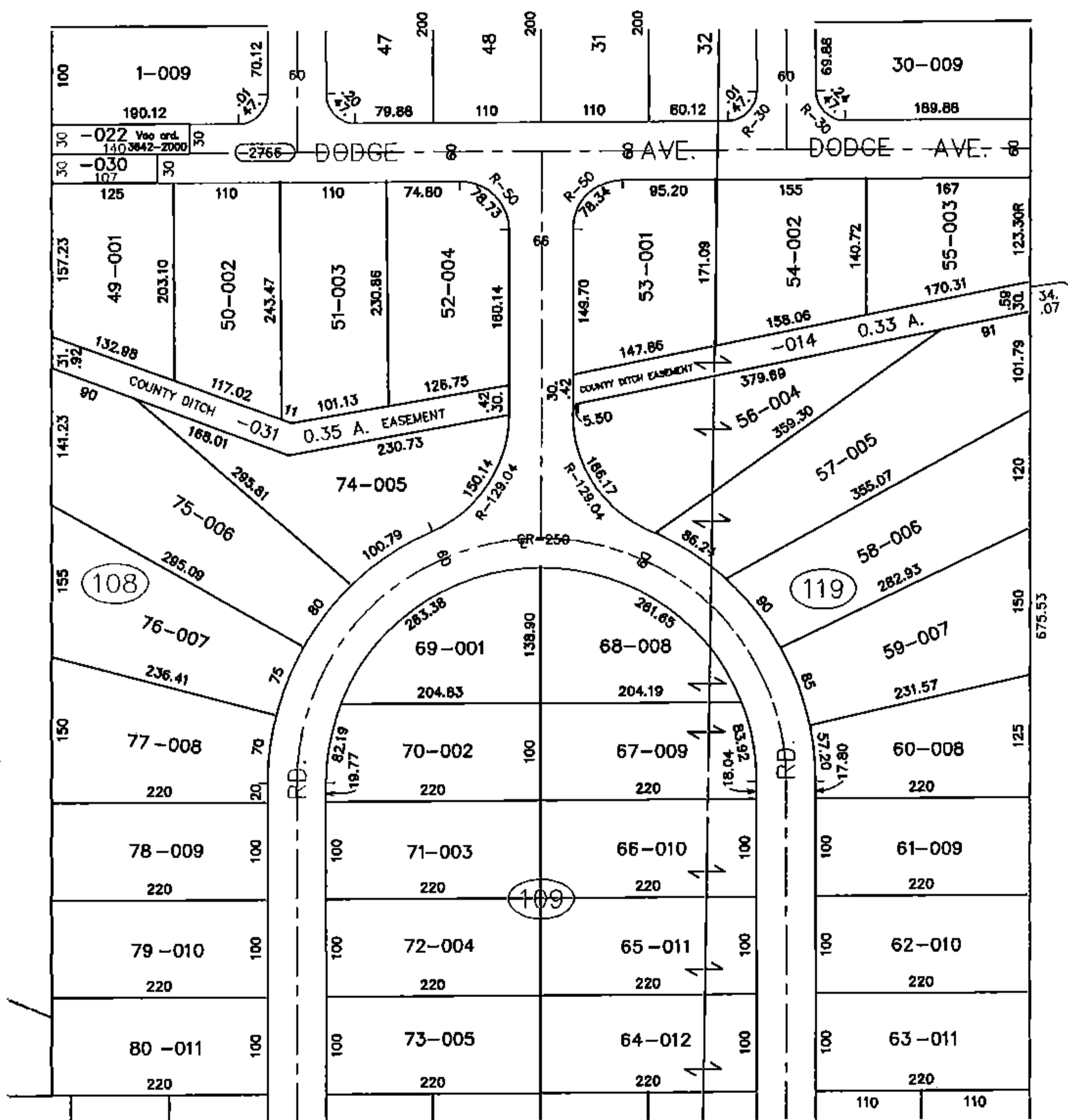
14-02997-A

ADD TO DUPLICATE

07-00-009-119-014
 0.33 A.
 &
 07-00-016-108-031
 0.35 A.



SHOWN AS DITCH EASEMENT ON PLAT



SPLITS/DEEDS PROCESSED
 LORAIN COUNTY TAX MAP DEPARTMENT
 226 MIDDLE AVE. ELYRIA, OHIO

SURVEYED BY: J. H. GETZ
 CLOSURE: 0.01 : 10.000
 MAP PAGE(S): 07-00-009 & -016
 APPROVED BY: TJS DATE: 8/14/14
 SCALE: 1" = 200 PRIOR INSTRUMENT: NA