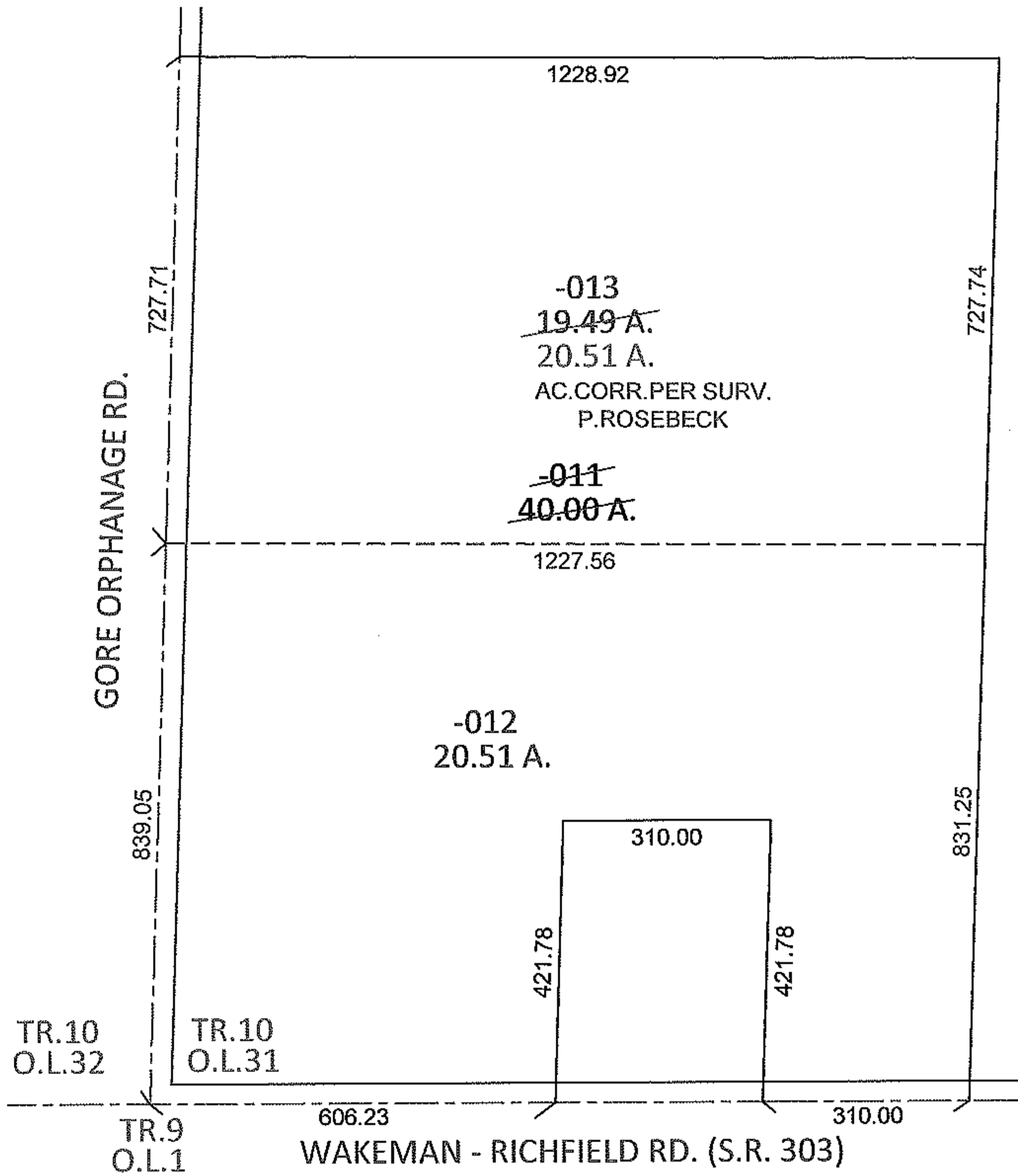
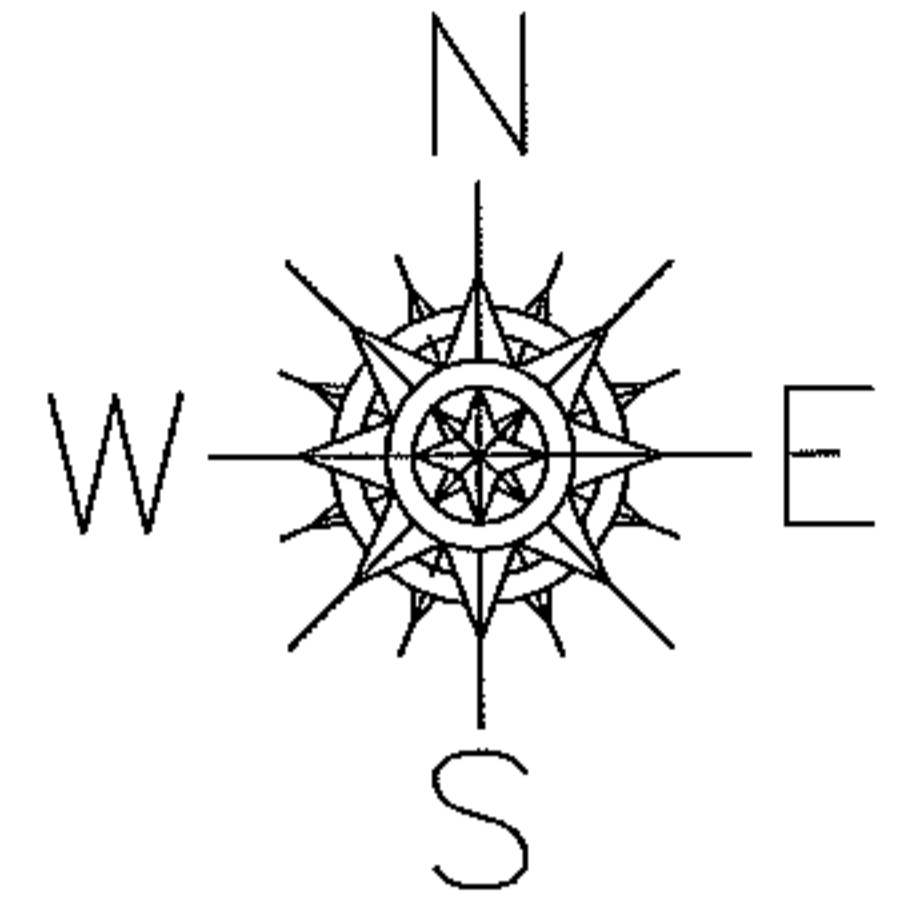


PARENT PARCEL: 13-10-031-000-011

CHILD PARCEL: 13-10-031-000-012, -013

STARTING POINT: SOUTHWEST CORNER OF TR.10 O.L.31

12-02994



SPLITS/DEEDS PROCESSED

LORAIN COUNTY TAX MAP DEPARTMENT
226 MIDDLE AVE. ELYRIA, OHIO

SURVEYED BY: PHILLIP A. ROSEBECK

CLOSURE: .01:10,000

MAP PAGE(S): 13-A

APPROVED BY: RRM DATE: 1-31-12

SCALE: 1"= 300 PRIOR INST.: 20110378198