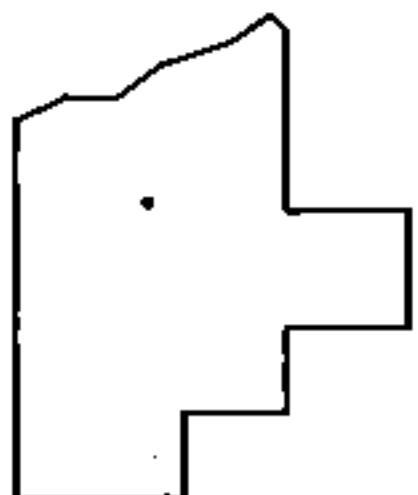
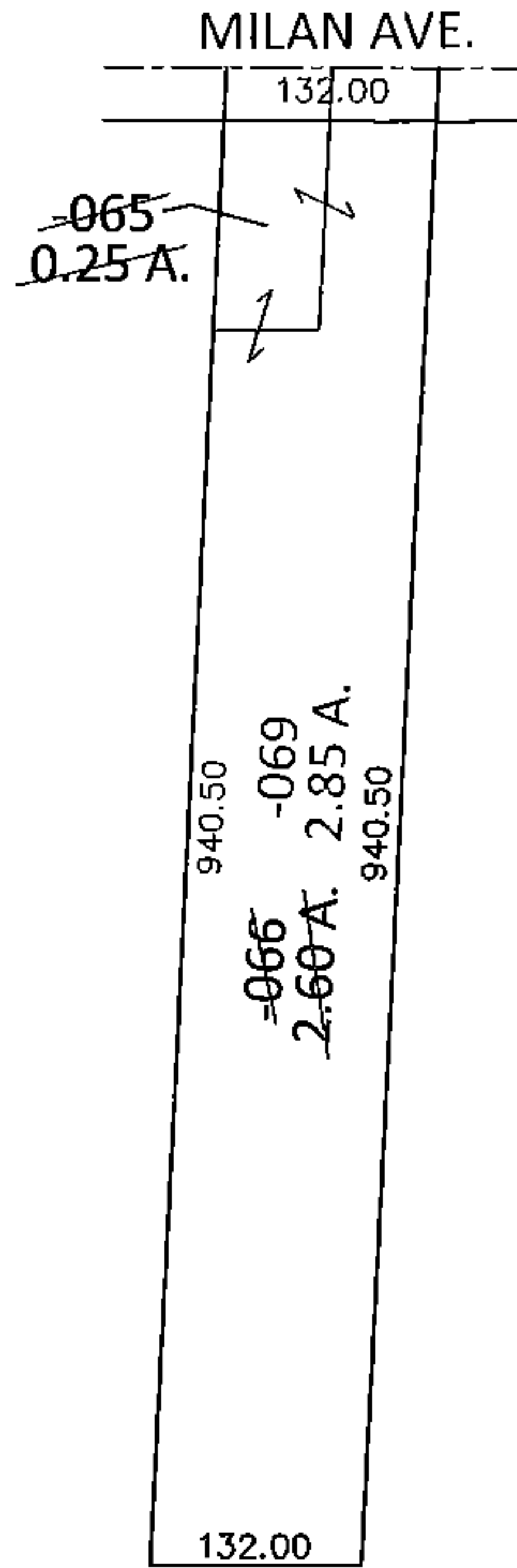
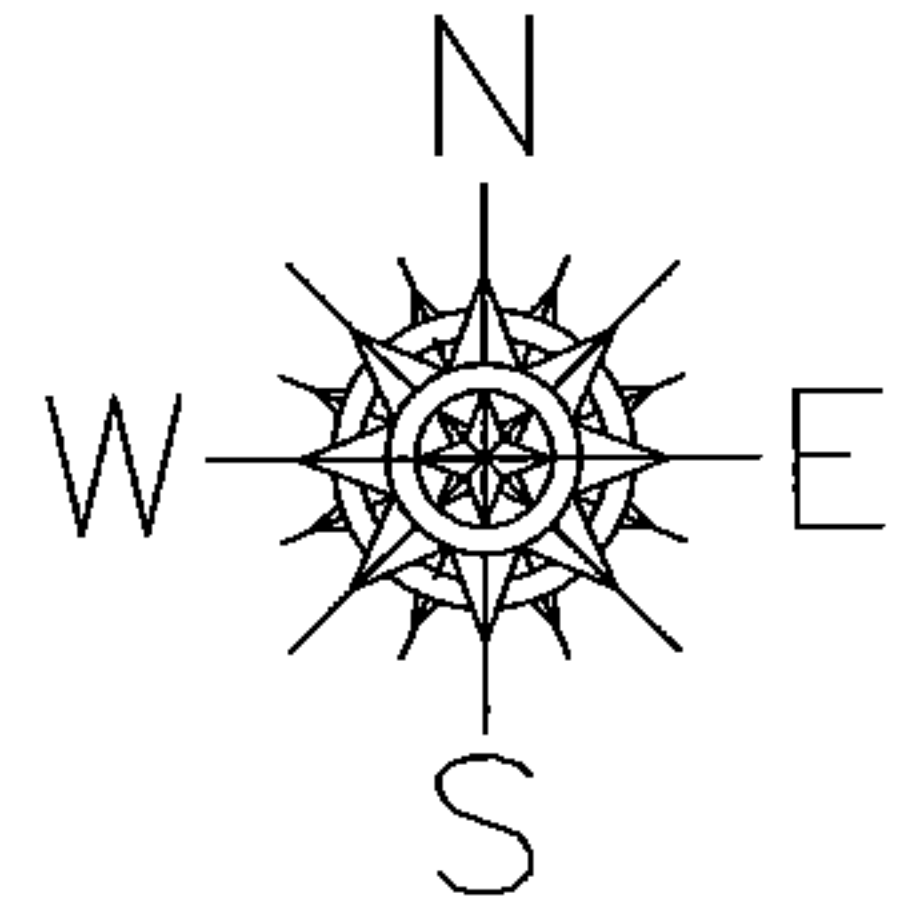


PARENT PARCEL: 05-00-004-102-065, -066

CHILD PARCEL: 05-00-004-102-069

STARTING POINT: INTERSECTION OF C/L OF MILAN AVE. AND WEST LINE OF LAND CONVEYED TO CLEVELAND STONE CO.

14-02992-C



SPLITS/DEEDS PROCESSED

LORAIN COUNTY TAX MAP DEPARTMENT
226 MIDDLE AVE. ELYRIA, OHIO

SURVEYED BY: N/A

CLOSURE: .00:10,000

MAP PAGE(S): 5-00-004-A

APPROVED BY: RRM DATE: 7-30-14

SCALE: 1"= 200 PRIOR INST.: 20000667159