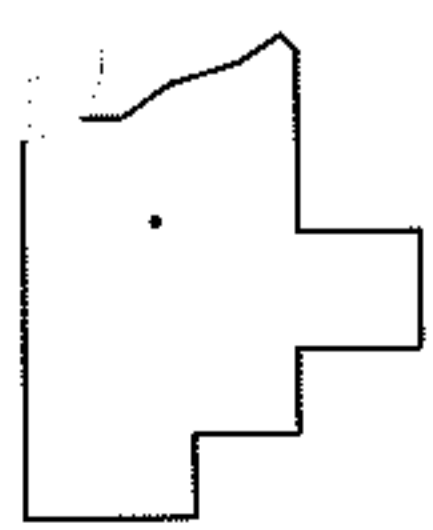
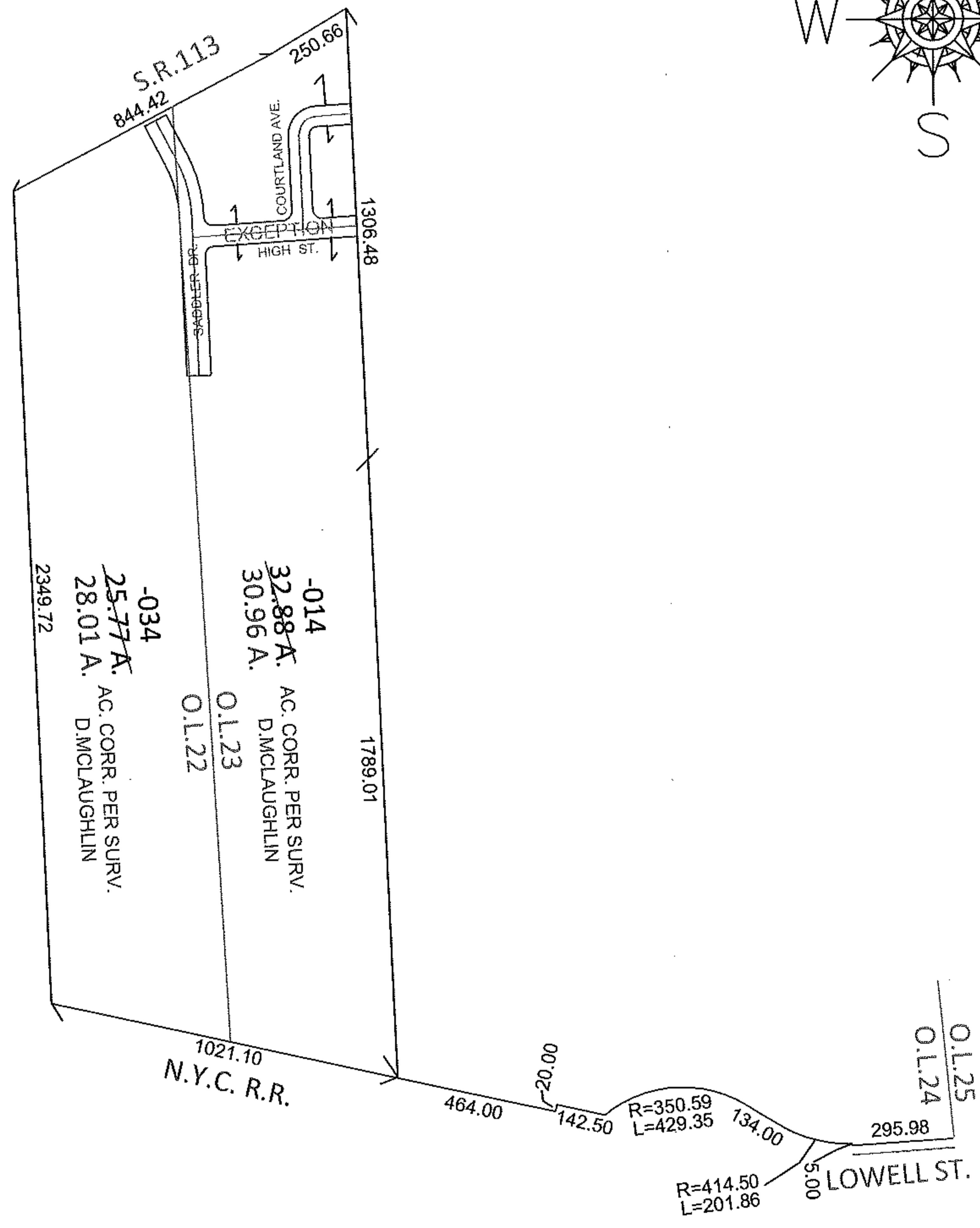
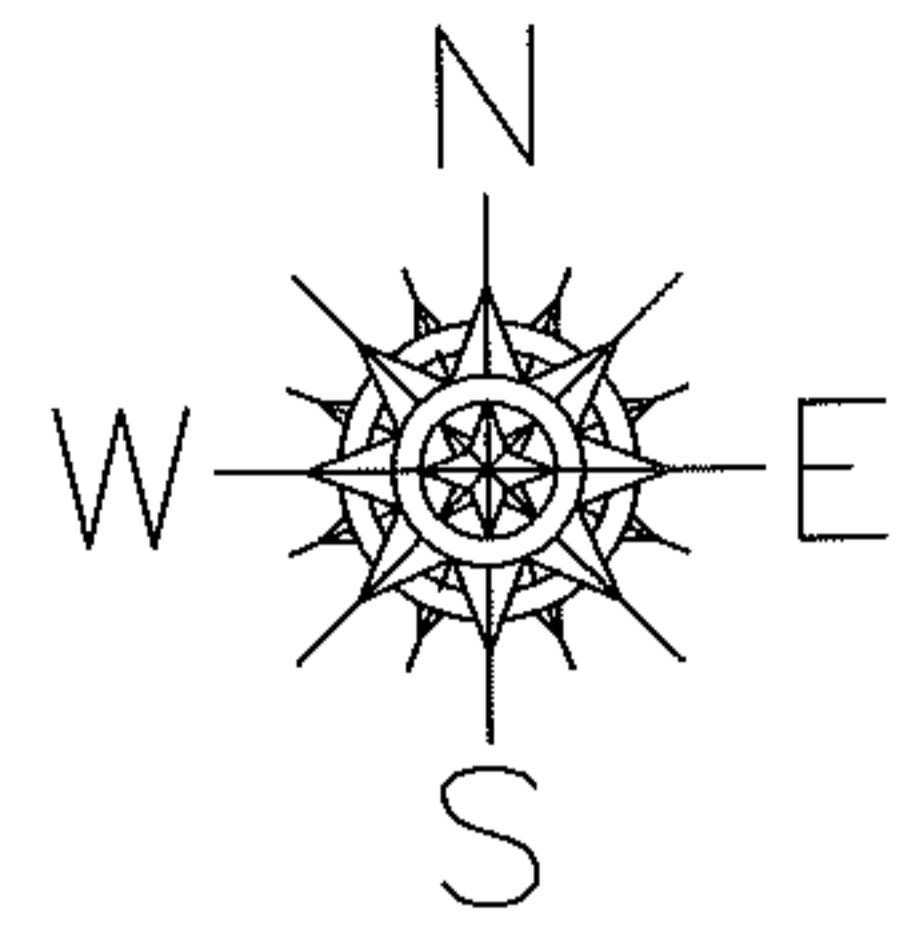


PARENT PARCEL: 06-24-022-000-034, 06-24-023-101-014

11-02985

CHILD PARCEL:

STARTING POINT: INTERSECTION OF NORTH LINE OF LOWELL ST. AND EAST LINE OF O.L.24



**SPLITS/DEEDS PROCESSED**

LORAIN COUNTY TAX MAP DEPARTMENT  
226 MIDDLE AVE. ELYRIA, OHIO

SURVEYED BY: DOUGLAS P. MCLAUGHLIN  
 CLOSURE: .01:10,000  
 MAP PAGE(S): 6-76  
 APPROVED BY: RRM DATE: 12-28-11  
 SCALE: 1"= 500 PRIOR INST.: OR 808/195