

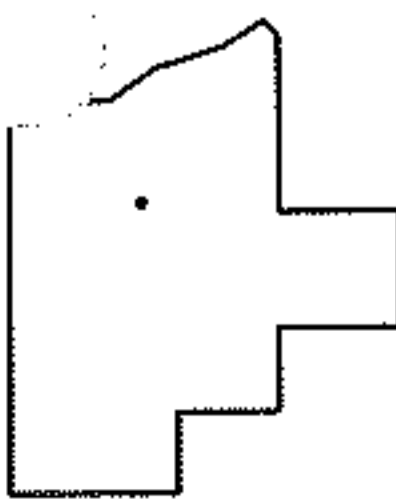
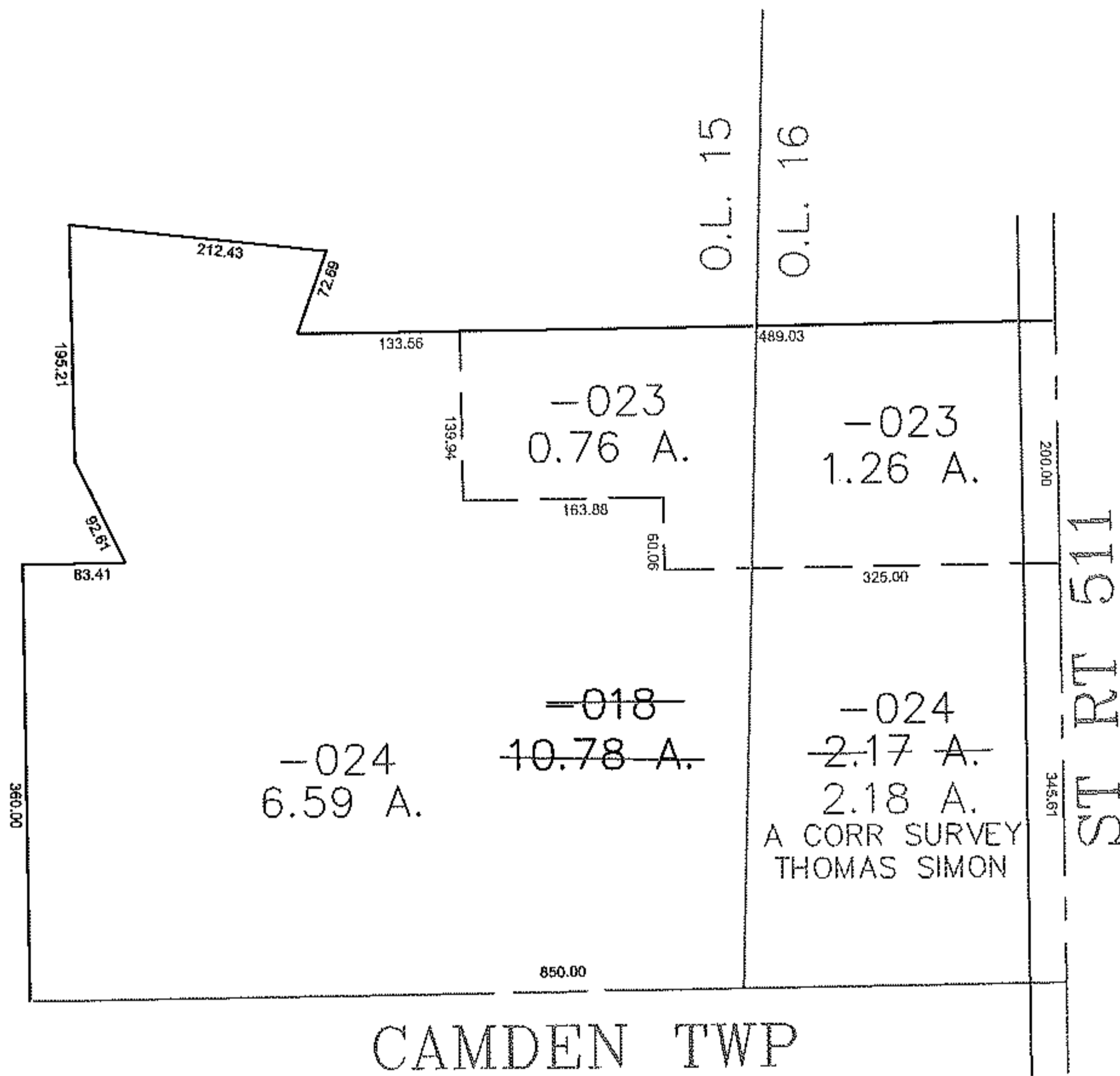
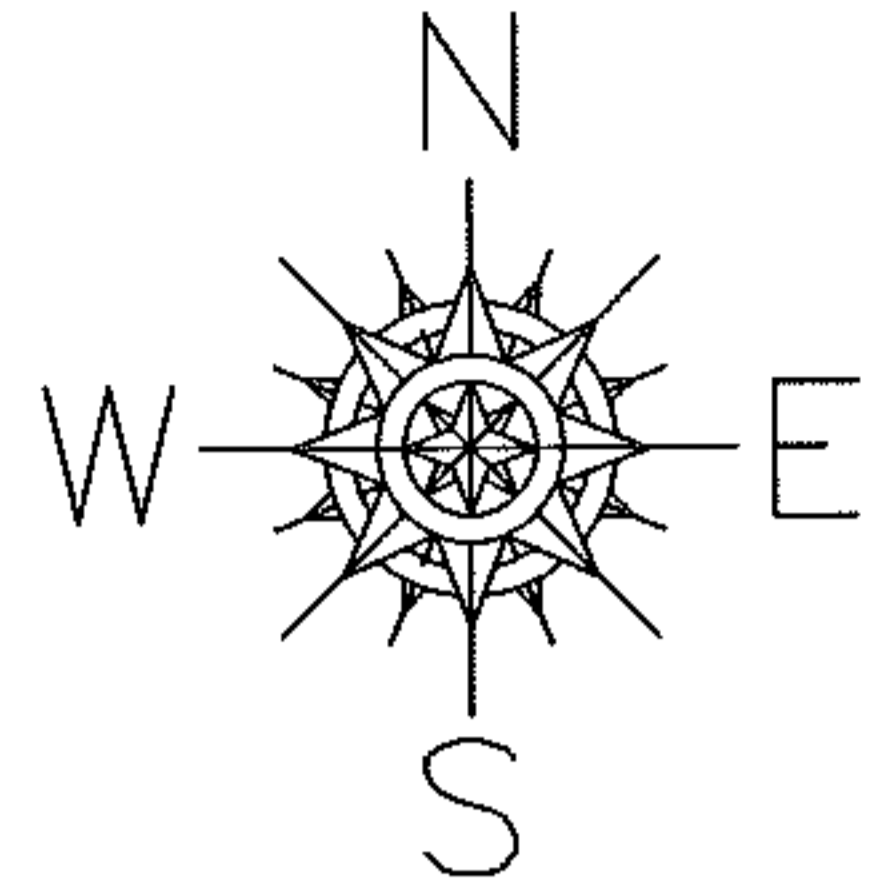
RASVEA

PARENT PARCEL: 08-12-015-000-018

CHILD PARCEL: 08-12-015-000-023, -024 08-12-016-000-023, -024

STARTING POINT: CENTERLINE OF ST RT 511 & SOUTH LINE OF HENRIETTA TWP

11-02982



SPLITS/DEEDS PROCESSED
LORAIN COUNTY TAX MAP DEPARTMENT
 226 MIDDLE AVE. ELYRIA, OHIO

SURVEYED BY: THOMAS SIMON
 CLOSURE: 0.00 : 10,000
 MAP PAGE(S): 8-F
 APPROVED BY: JAH DATE: 12/27/2011
 SCALE: 1" = 200' PRIOR INSTRUMENT: 20100357806