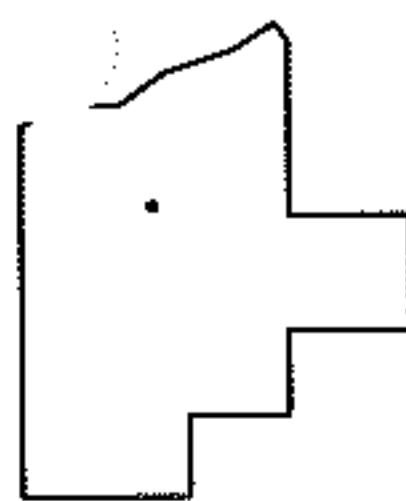
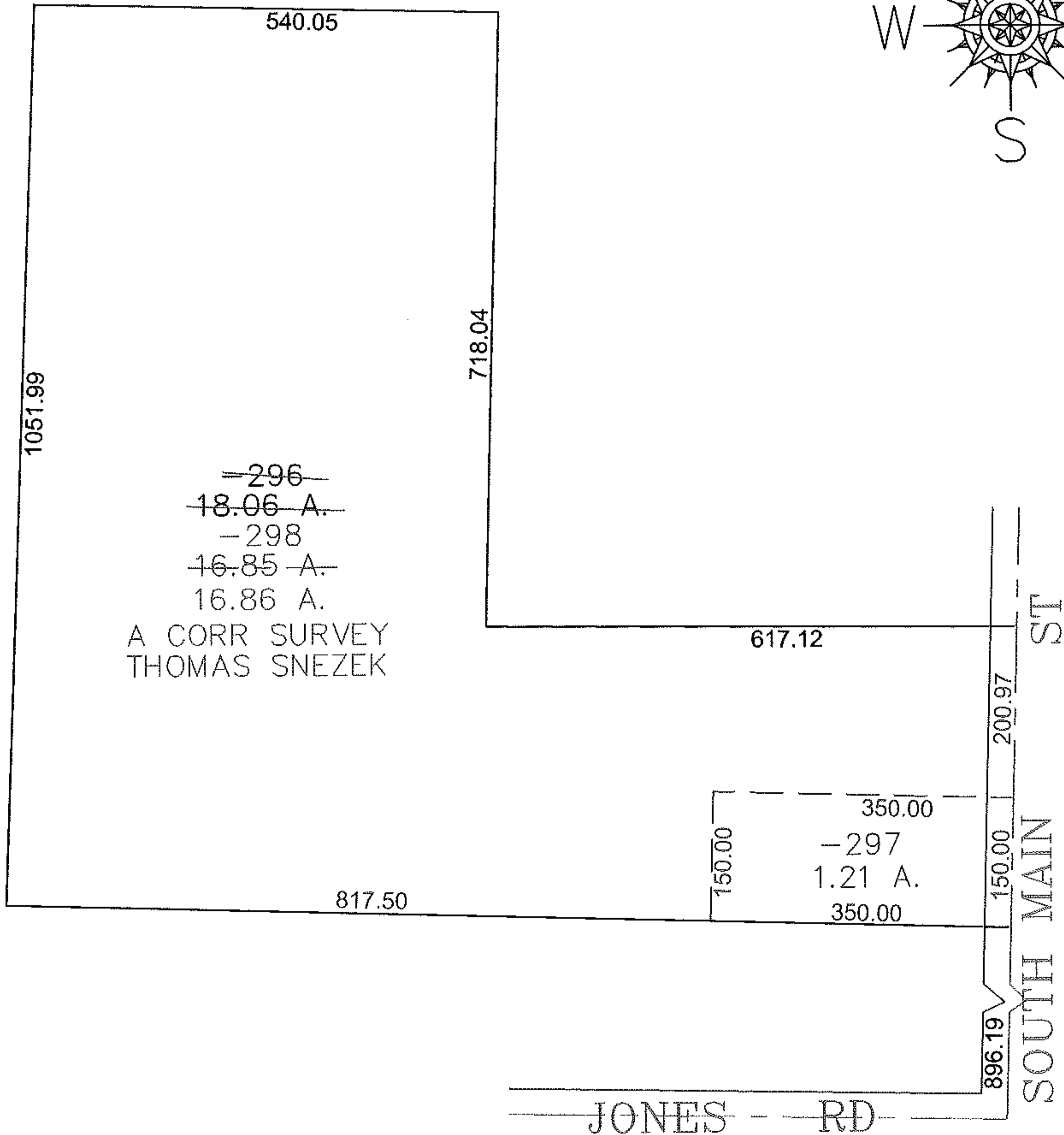
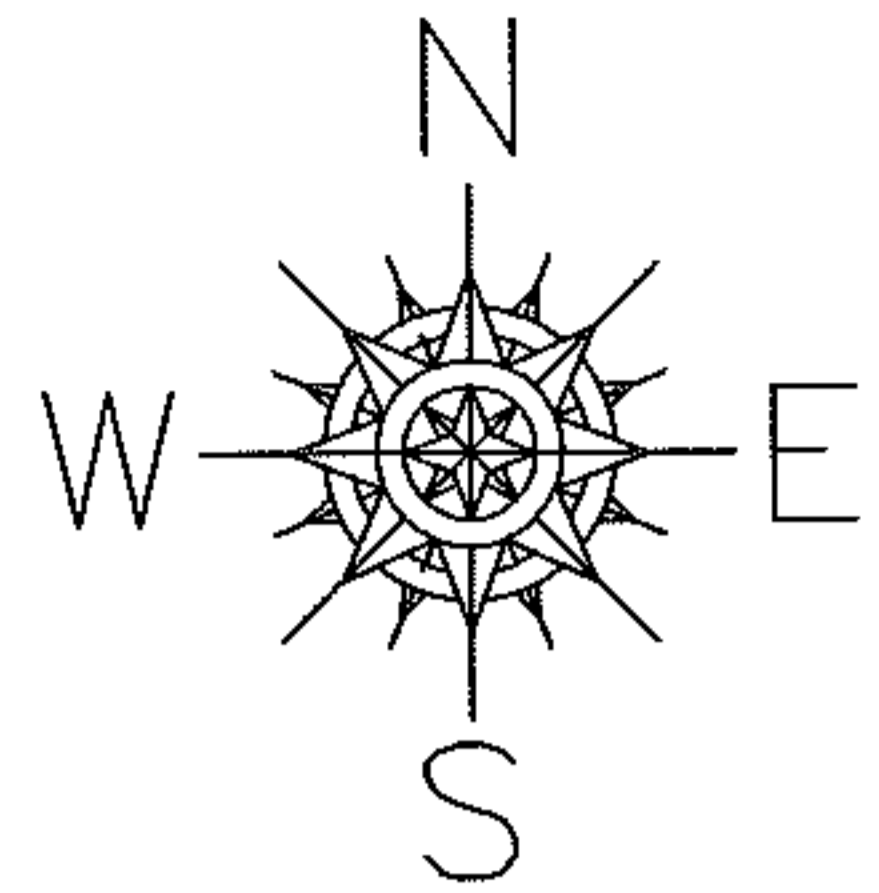


PARENT PARCEL: 18-00-026-101-296

CHILD PARCEL: 18-00-026-101-297, -298

STARTING POINT: CENTERLINE OF JONES RD & SOUTH MAIN ST

11-02977



SPLITS/DEEDS PROCESSED
 LORAIN COUNTY TAX MAP DEPARTMENT
 226 MIDDLE AVE. ELYRIA, OHIO

SURVEYED BY: THOMAS SNEZEK
 CLOSURE: 0.00 : 10,000
 MAP PAGE(S): 18-00-026-B, D
 APPROVED BY: JAH DATE: 12-12-2011
 SCALE: 1" = 200 PRIOR INSTRUMENT: 20070225317