

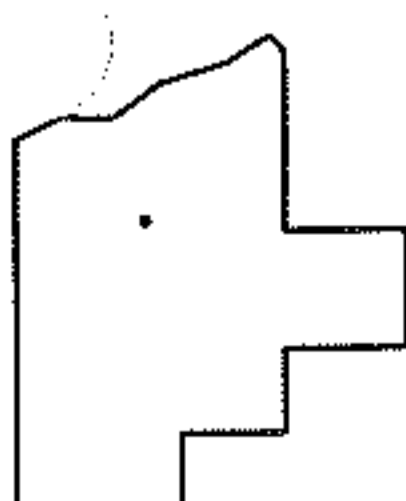
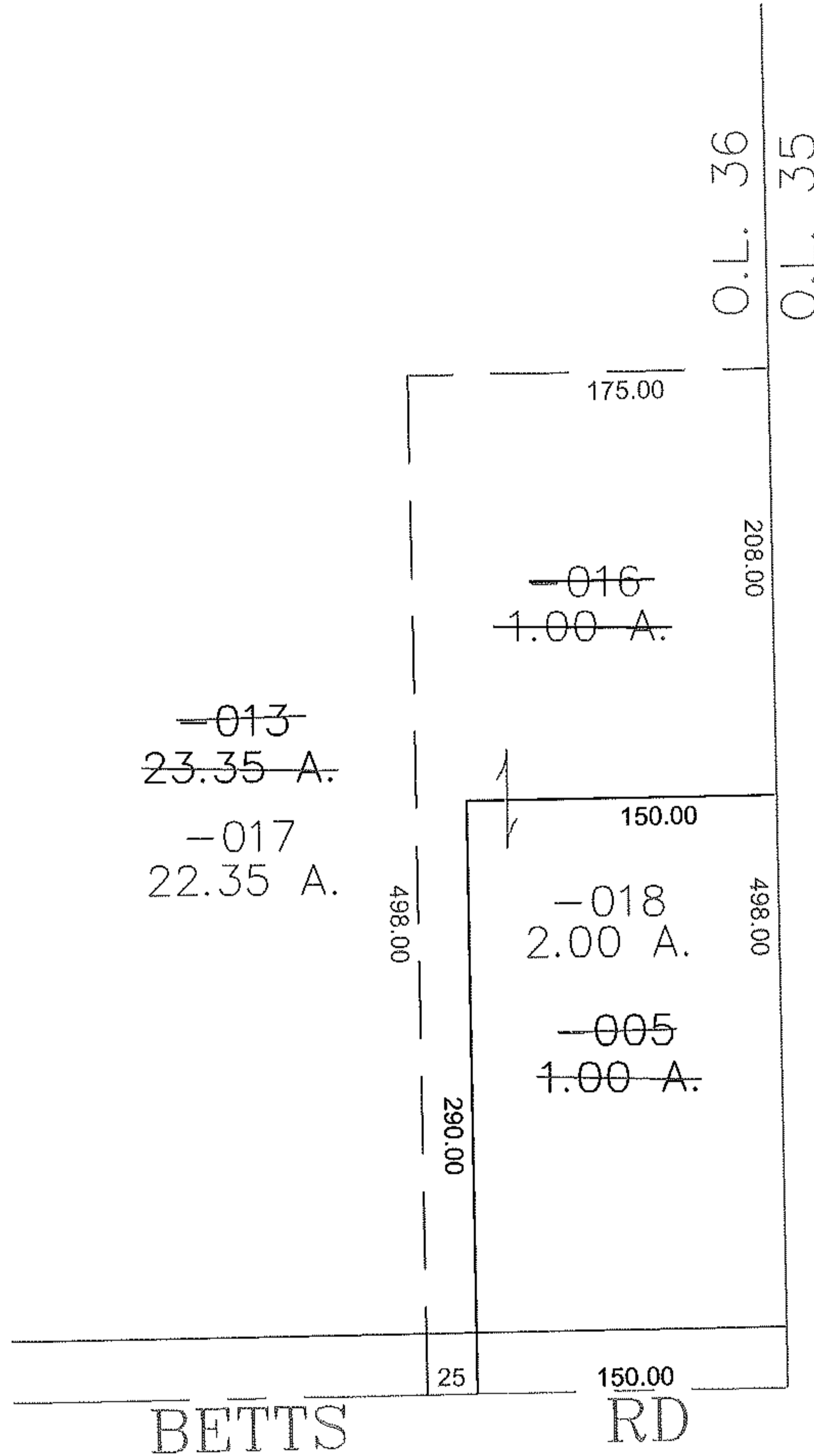
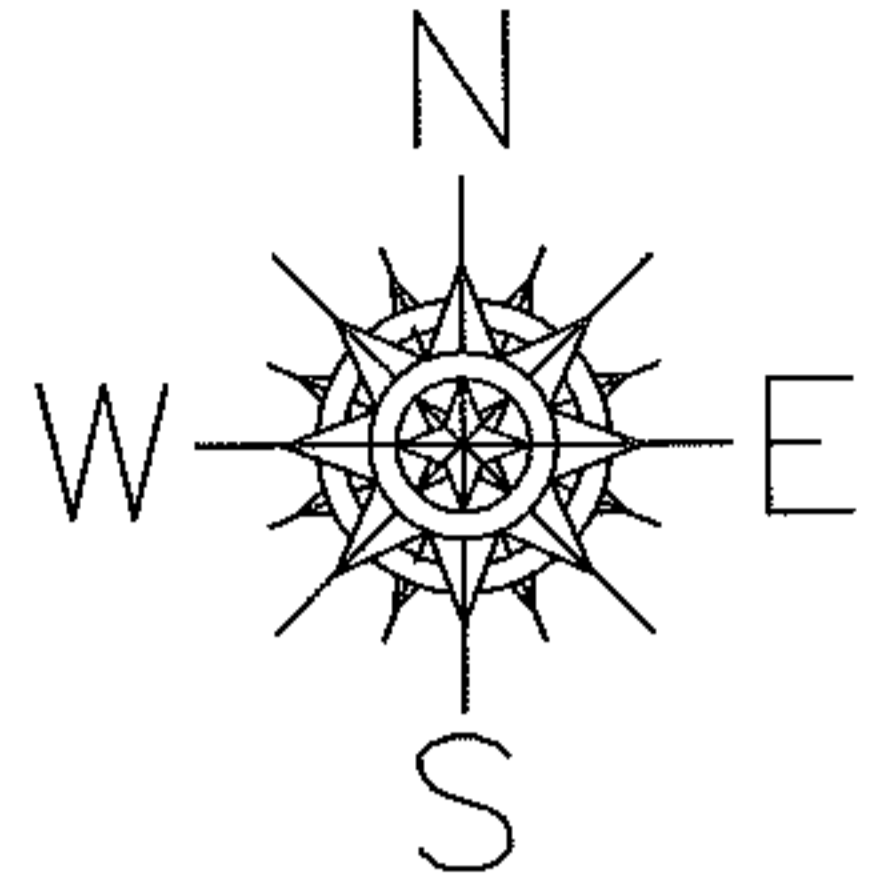
RASTER

PARENT PARCEL: 13-09-036-000-013, -005

CHILD PARCEL: 13-09-036-000-016 THRU -018

STARTING POINT: XXXXXX

11-02973



SPLITS/DEEDS PROCESSED

LORAIN COUNTY TAX MAP DEPARTMENT
226 MIDDLE AVE. ELYRIA, OHIO

SURVEYED BY: THOMAS SIMON

CLOSURE: 0.00 : 10.000

MAP PAGE(S): 13-E

APPROVED BY: JAH DATE: 12-1-2011

SCALE: 1" = 100 PRIOR INSTRUMENT: 20020811243