

PARENT PARCEL: 12-00-056-000-033

CHILD PARCEL: 12-00-056-630-002 & ~~003~~ - 004

STARTING POINT: XXXXXX

14-02972-G

ADD TO DUPLICATE

12-00-056-630-004

10 X 10

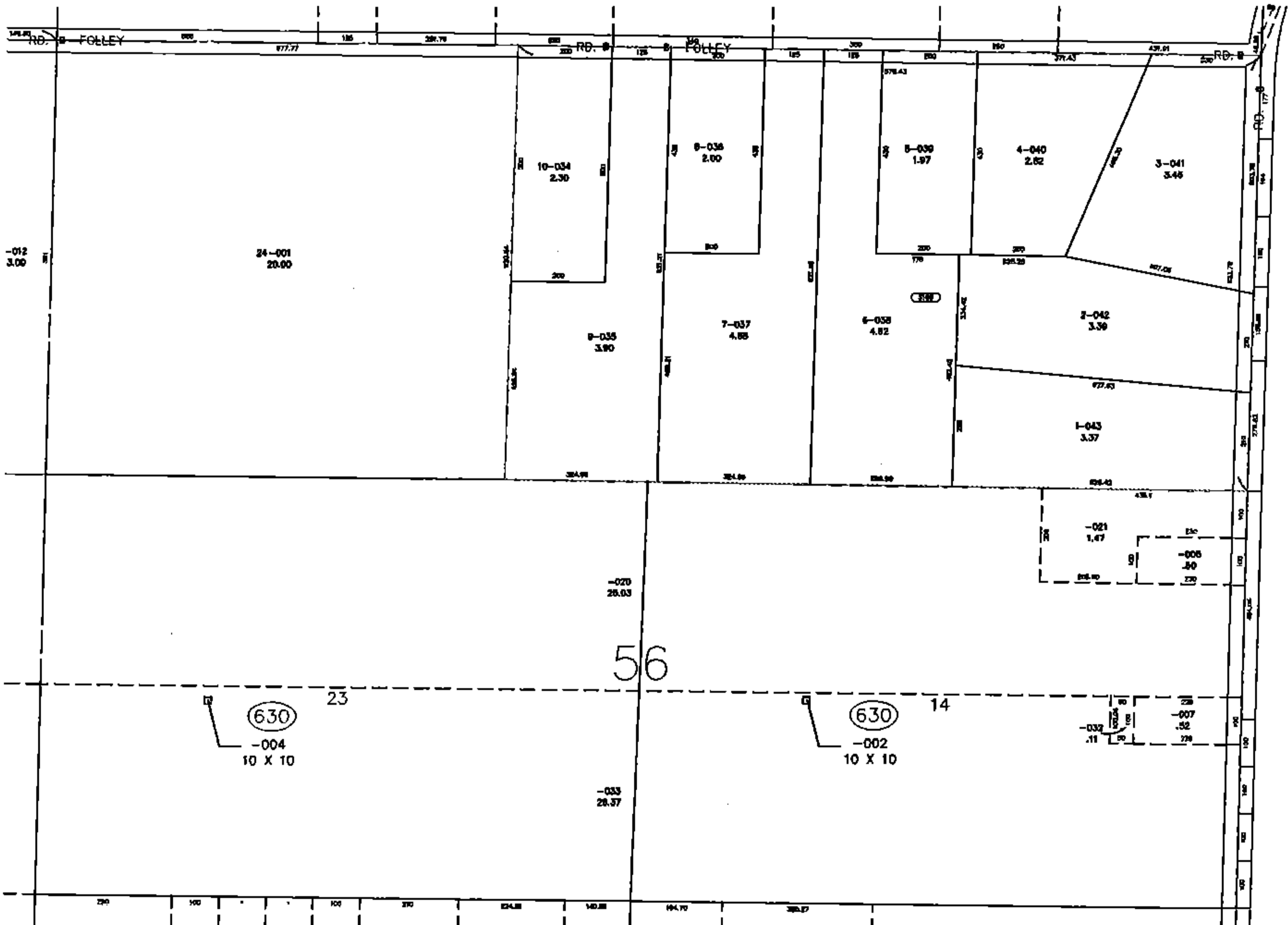
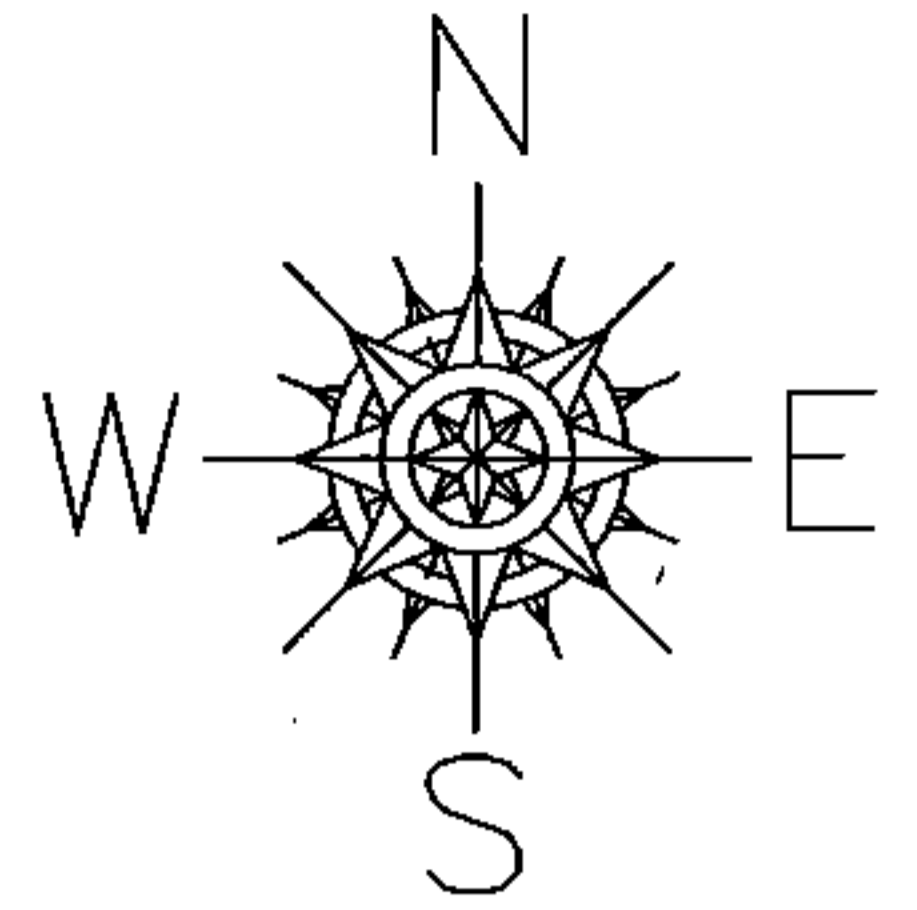
API# 34093212450

ADD TO DUPLICATE

12-00-056-630-002

10 X 10

API# 34093212260



Handwritten signature
4/15/16

SPLITS/DEEDS PROCESSED

LORAIN COUNTY TAX MAP DEPARTMENT
226 MIDDLE AVE. ELYRIA, OHIO

SURVEYED BY: NA

CLOSURE: NA

MAP PAGE(S): 12-00-056

APPROVED BY: TJS DATE: 6/26/14

SCALE: 1"= 400 PRIOR INST.: NA