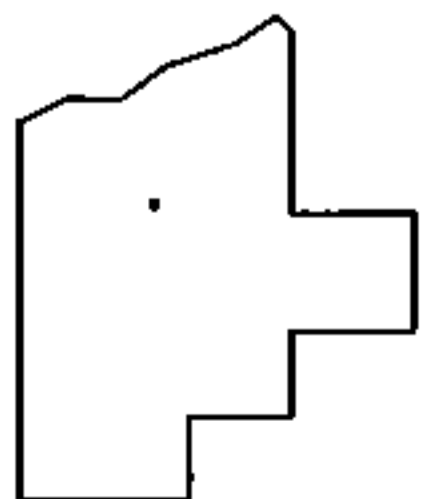
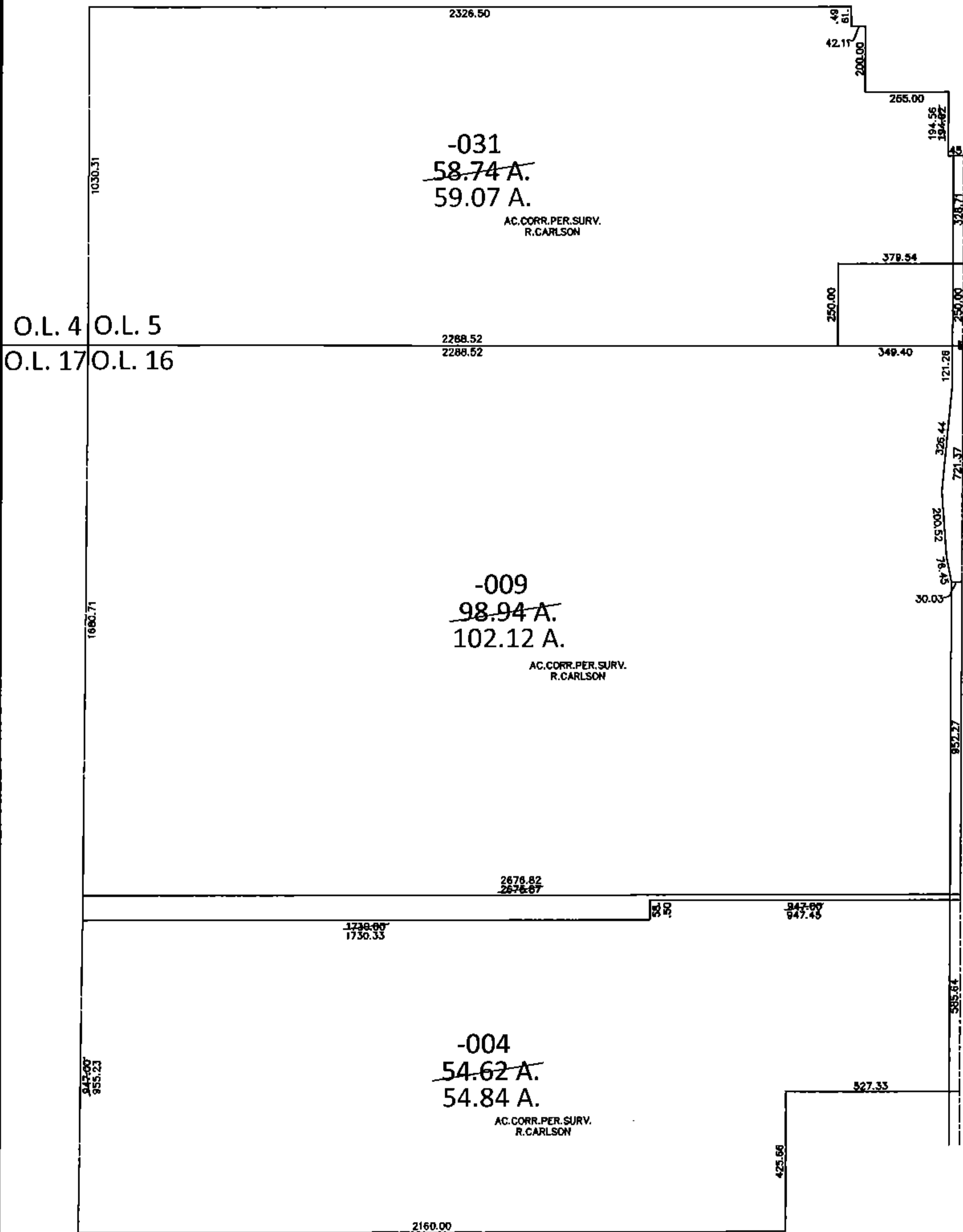
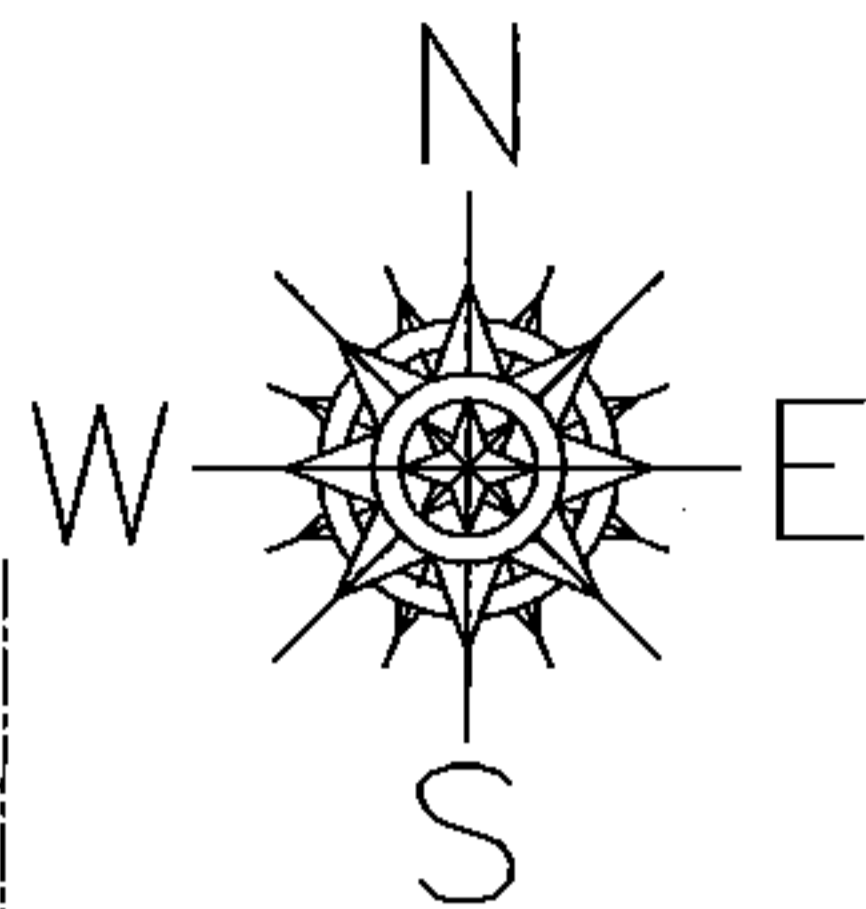


PARENT PARCEL: 15-00-005-000-031, 15-00-016-000-004, -009

CHILD PARCEL: \_\_\_\_\_

STARTING POINT: AT A MON BOX AT THE NORTHEAST CORNER OF O.L.16

14-02962-D



**SPLITS/DEEDS PROCESSED**

LORAIN COUNTY TAX MAP DEPARTMENT  
226 MIDDLE AVE. ELYRIA, OHIO

SURVEYED BY: RICHARD D. CARLSON

CLOSURE: .01:10,000

MAP PAGE(S): 15-B

APPROVED BY: RRM DATE: 6-16-14

SCALE: 1"= 500 PRIOR INST.: OR 911/105